

VOR/DME BVO <b>117.9</b> Chan <b>126</b>	APP CRS <b>348°</b>	Rwy Idg <b>6201</b> TDZE <b>712</b> Apt Elev <b>717</b>
--	------------------------	---

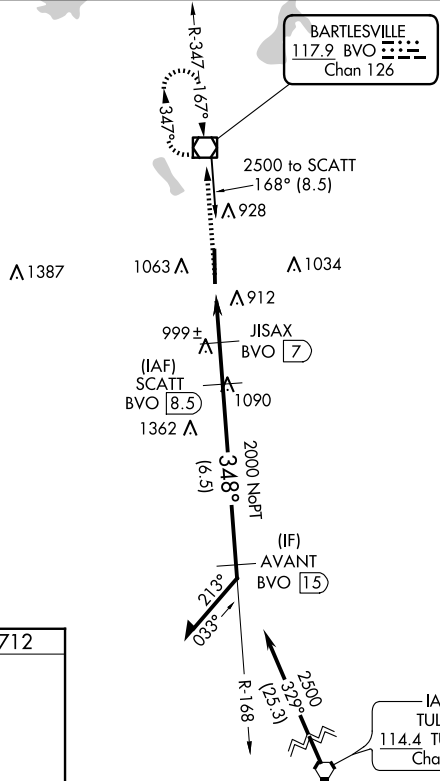
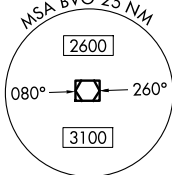
# VOR/DME RWY 35

BARTLESVILLE MUNI (BVO)

**⚠** Circling NA east of Rwy 17-35. When local altimeter setting not received, use Tulsa Intl altimeter setting and increase all MDAs 100 feet and S-35 and Circling Cat C visibility ¼ SM. VDP NA when using Tulsa Intl altimeter setting.

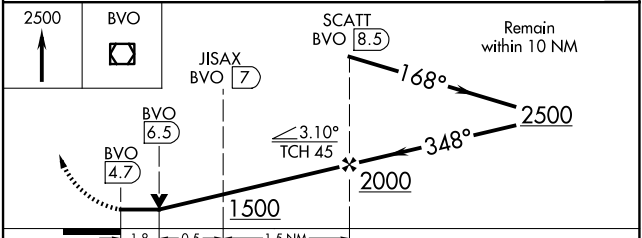
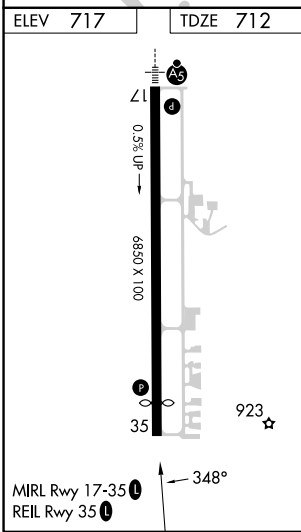
MISSED APPROACH: Climb to 2500 direct BVO VOR/DME and hold.

ASOS <b>132.675</b>	KANSAS CITY CENTER <b>128.6 282.325</b>	CTAF <b>122.825 0</b>
------------------------	--	--------------------------



SC-1, 20 MAR 2025 to 17 APR 2025

SC-1, 20 MAR 2025 to 17 APR 2025



CATEGORY	A	B	C	D
S-35	1320-1	608 (700-1)	1320-1¾ 608 (700-1¾)	NA
<b>C</b> CIRCLING	1400-1	683 (700-1)	1400-2 683 (700-2)	NA