

WAAS CH <b>65708</b>	APP CRS <b>018°</b>	Rwy Idg TDZE <b>488</b>	<b>6201</b>
<b>W02A</b>		Apt Elev <b>488</b>	

# RNAV (GPS) RWY 2

DILLANT/HOPKINS (EEN)

RNP APCH - GPS.

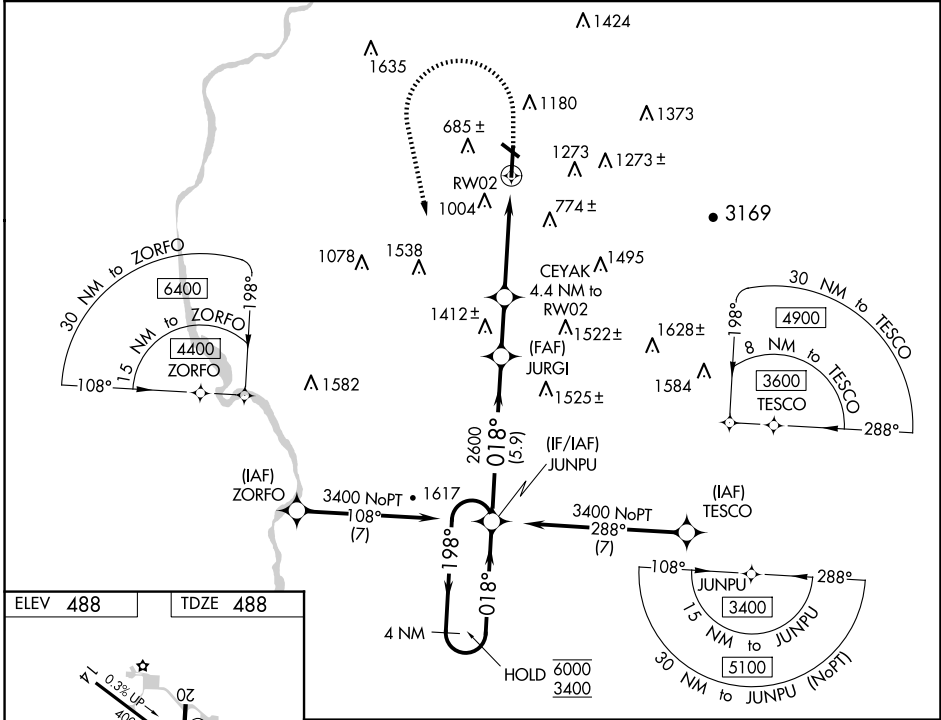
**⚠** Circling Rwy 32 NA at night. Rwy 2 helicopter visibility reduction below 3/4 SM NA. Inop table does not apply to LPV all Cats and LNAV Cat A. For inop ALS, increase LNAV Cat B visibility to 1 1/4 SM. When local altimeter setting not received, use ORE altimeter setting; increase LPV DA to 897; increase all MDAs 60 feet. For inop ALS when using ORE altimeter setting, increase LNAV Cats A/B visibility to 1 1/4 SM. VDP NA when using ORE altimeter setting.

MALSRL

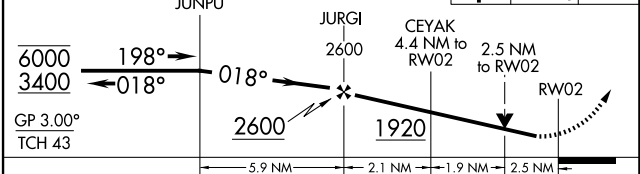
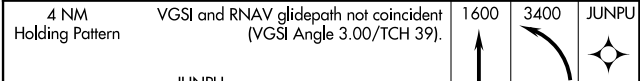
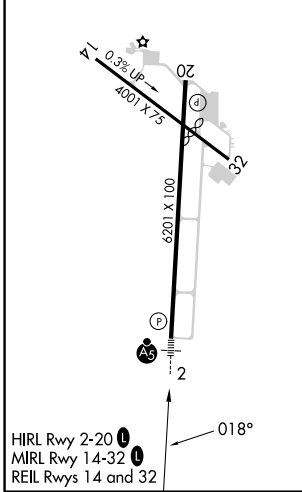


**MISSED APPROACH:**  
Climb to 1600 then climbing left turn to 3400 direct JUNPU and hold.

AWOS-3PT <b>119.025</b>	BOSTON CENTER <b>123.75 338.2</b>	UNICOM <b>123.0 (CTAF) 0</b>
----------------------------	--------------------------------------	---------------------------------



ELEV <b>488</b>	TDZE <b>488</b>
-----------------	-----------------



CATEGORY	A	B	C	D
LPV DA	843-1 355 (400-1)			
LNAV MDA	1340-1	852 (900-1)	1340-2	852 (900-2)
<b>C</b> CIRCLING	1380-1 1/4 892 (900-1 1/4)	1480-1 1/2 992 (1000-1 1/2)	1760-3 1272 (1300-3)	1980-3 1492 (1500-3)

NE-1, 20 MAR 2025 to 17 APR 2025

NE-1, 20 MAR 2025 to 17 APR 2025