

APP CRS 158°	Rwy ldg TDZE Apt Elev	4311 289 296
------------------------	-----------------------------	---

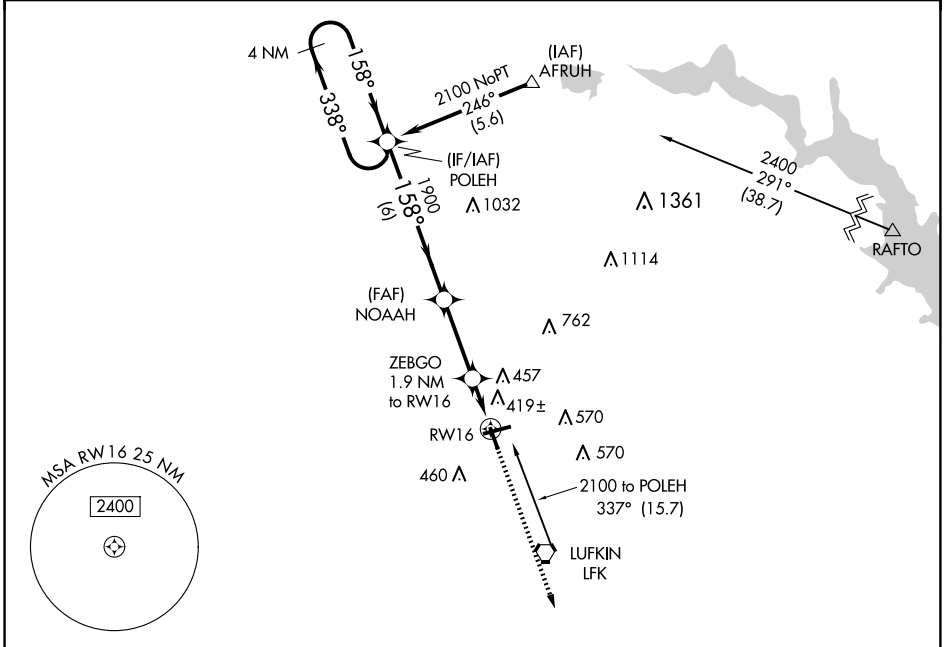
RNAV (GPS) RWY 16

ANGELINA COUNTY (L'FK)

⚠ DME/DME RNP-0.3 NA.
⚠ Straight in Rwy 16 NA at night, Circling Rwy 16, 25 NA at night.
 Rwy 16 helicopter visibility reduction below 1 SM NA.

MISSED APPROACH: Climb to 2000 direct EXISE and hold.

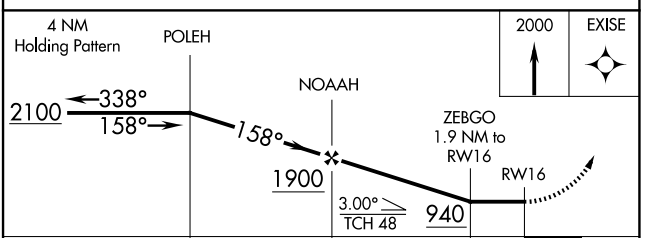
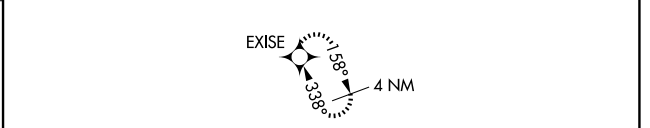
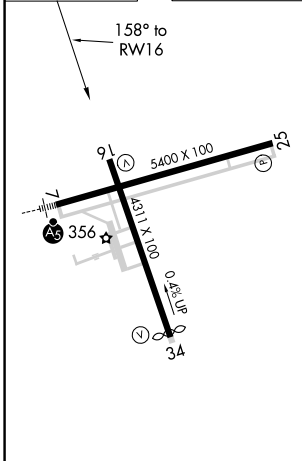
ASOS 120.625	HOUSTON CENTER 125.175 285.575	UNICOM 123.0 (CTAF) 0
------------------------	--	---------------------------------



SC-5, 20 MAR 2025 to 17 APR 2025

SC-5, 20 MAR 2025 to 17 APR 2025

ELEV 296	TDZE 289
----------	----------



CATEGORY	A	B	C	D
LNAV MDA	680-1	391 (400-1)	680-1½	391 (400-1½)
C CIRCLING	740-1 444 (500-1)	760-1 464 (500-1)	880-1½ 584 (600-1½)	1140-2¾ 844 (900-2¾)

LUFKIN, TEXAS
 Amdt 1 07DEC17

31°14'N-94°45'W

ANGELINA COUNTY (L'FK)

RNAV (GPS) RWY 16