

WAAS CH <b>42802</b> <b>W18A</b>	APP CRS <b>182°</b>	Rwy Idg TDZE Apt Elev	<b>8201</b> <b>695</b> <b>695</b>
--	------------------------	-----------------------------	---

# RNAV (GPS) RWY 18

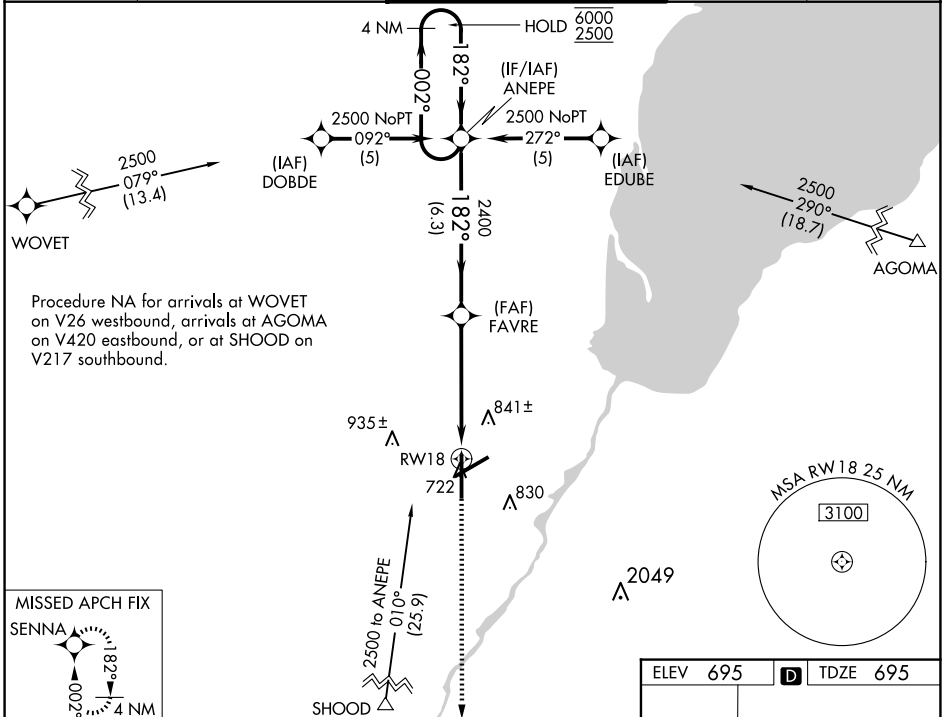
GREEN BAY/AUSTIN STRAUBEL INTL (GRB)

RNP APCH.

▼ For uncompensated Baro-VNAV systems, LNAV/VNAV NA below ASR -16° C or above 54° C.

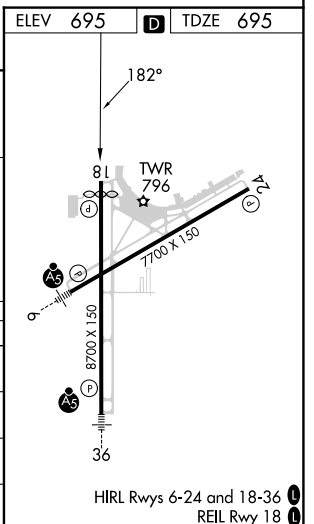
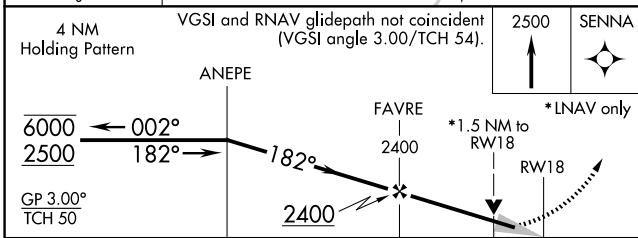
MISSED APPROACH: Climb to 2500 direct SENNA and hold.

ATIS <b>124.1</b>	GREEN BAY APP CON* <b>119.4 338.2</b>	GREEN BAY TOWER* <b>118.7 (CTAF) 257.8</b>	GND CON <b>121.9</b>	CLNC DEL <b>121.75</b>
----------------------	--	---	-------------------------	---------------------------



EC-3, 20 MAR 2025 to 17 APR 2025

EC-3, 20 MAR 2025 to 17 APR 2025



CATEGORY	A	B	C	D
LPV DA		979-7/8	284 (300-7/8)	
LNAV/VNAV DA		1187-13/8	492 (500-13/8)	
LNAV MDA	1220-1	525 (600-1)	1220-1 1/2	525 (600-1 1/2)
CIRCLING	1220-1	525 (600-1)	1300-1 1/4 605 (700-1 1/4)	1300-2 605 (700-2)

HIRL Rwy 6-24 and 18-36  
REIL Rwy 18