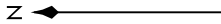


# WILKES-BARRE FIVE ARRIVAL

TETERBORO, NEW JERSEY

NEWARK APP CON  
127.6 379.9  
CDW ATIS  
135.5  
MMU ATIS  
124.25  
TEB D-ATIS  
114.2 132.85



JAMESTOWN  
114.7 JHW  
Chan 94

WILKES-BARRE  
111.6 LVZ  
Chan 53  
Expect FL180

SPARTA  
115.7 SAX  
Chan 104

STILLWATER  
109.6 STW  
Chan 33

ESSEX COUNTY  
TETERBORO

MORRISTOWN MUNI

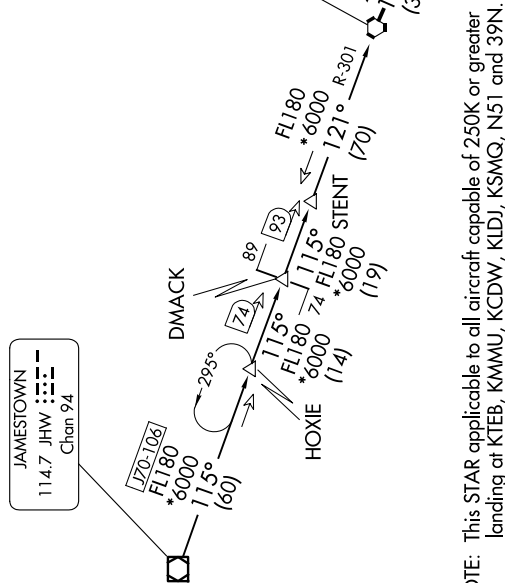
SOMERSET  
SOLBERG/HUNTERDON

PRINCETON

NOTE: Chart not to scale.

NE-2, 20 MAR 2025 to 17 APR 2025

DME required. RADAR required.



NOTE: This STAR applicable to all aircraft capable of 250K or greater landing at KTEB, KMMU, KCDW, KLDJ, KSMG, N51 and 39N.  
 NOTE: Advise ATC prior to speed reduction below 250K.

**ARRIVAL ROUTE DESCRIPTION**

**JAMESTOWN TRANSITION (JHW.LVZ5):** From over JHW VOR/DME on JHW R-115 and LVZ R-301 to LVZ VORTAC. Thence....

...From over LVZ VORTAC, on LVZ R-124 and STW R-305 to STW VOR/DME. Expect RADAR vectors to final approach course.

NE-2, 20 MAR 2025 to 17 APR 2025

# WILKES-BARRE FIVE ARRIVAL

TETERBORO, NEW JERSEY