

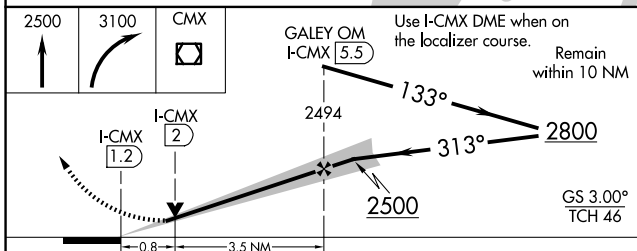
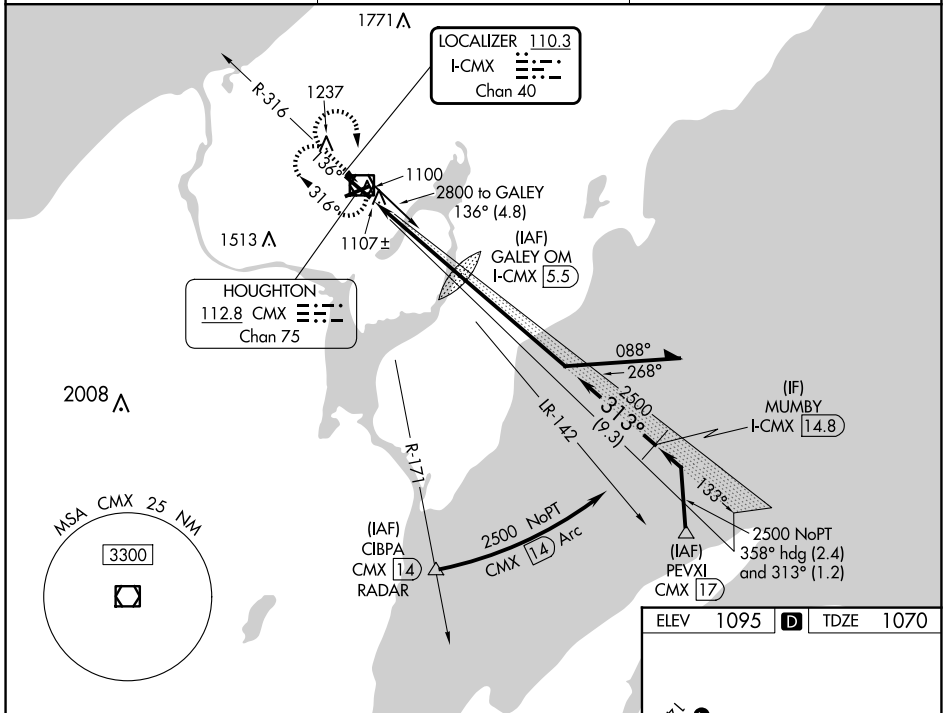
LOC/DME I-CMX <b>110.3</b> Chan 40	APP CRS <b>313°</b>	Rwy ldg TDZE <b>6501</b> <b>1070</b> Apt Elev <b>1095</b>
--	------------------------	--

# ILS or LOC RWY 32

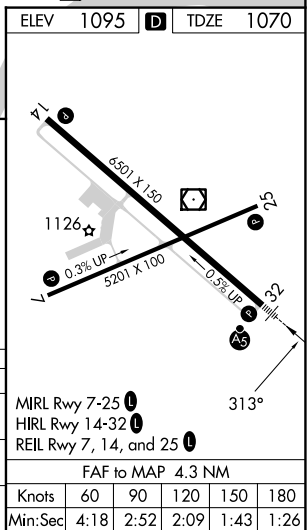
HOUGHTON COUNTY MEML (CMX)

DME required for procedure entry.		MALSR 	MISSED APPROACH: Climb to 2500 then climbing right turn to 3100 direct CMX VOR/DME and hold.
	For inop ALS, increase S-LOC 32 Cat C/D visibility to 3/8 SM.		

ASOS <b>125.675</b>	MINNEAPOLIS CENTER <b>133.55 379.1</b>	UNICOM <b>122.7 (CTAF) 0</b>
------------------------	---	---------------------------------



CATEGORY	A	B	C	D
S-ILS 32		1270-1/2	200 (200-1/2)	
S-LOC 32		1360-1/2	290 (300-1/2)	
CIRCLING	1620-1 525 (600-1)	1660-1 565 (600-1)	1700-1 3/4 605 (700-1 3/4)	1820-2 1/4 725 (800-2 1/4)



EC-1, 20 MAR 2025 to 17 APR 2025

EC-1, 20 MAR 2025 to 17 APR 2025