

LOC/DME I-CMX 110.3 Chan 40	APP CRS 133°	Rwy Idg 6501 TDZE 1095 Apt Elev 1095
---	------------------------	---

LOC BC RWY 14

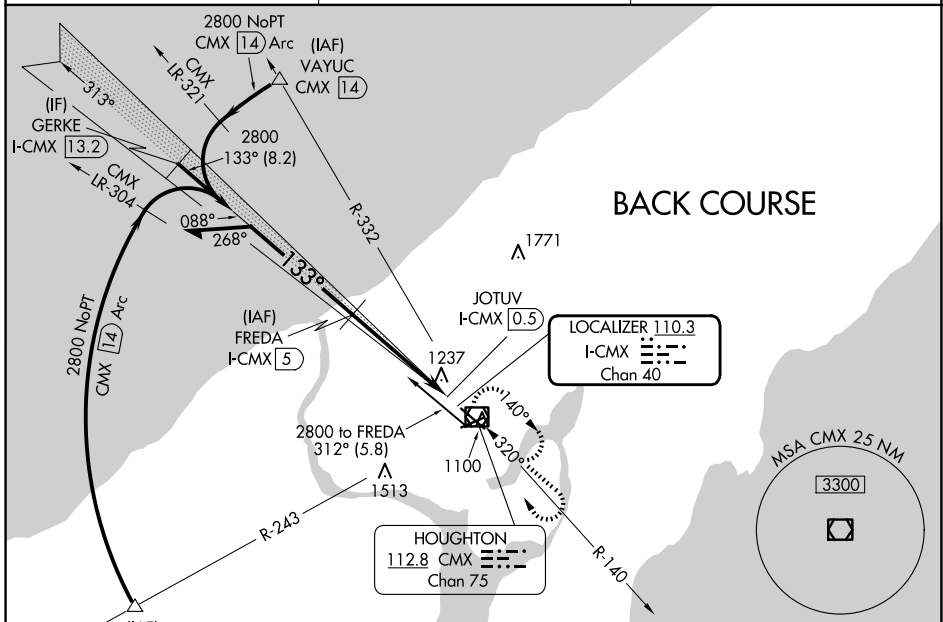
HOUGHTON COUNTY MEML (CMX)

DME required.

⚠ Rwy 14 helicopter visibility reduction below 3/4 SM NA.
Activate MIRLs Rwy 7-25 - CTAF.

MISSED APPROACH: Climb to 3100 then right turn direct CMX VOR/DME and hold.

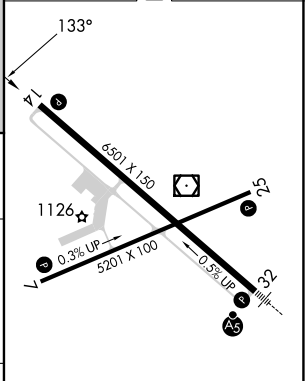
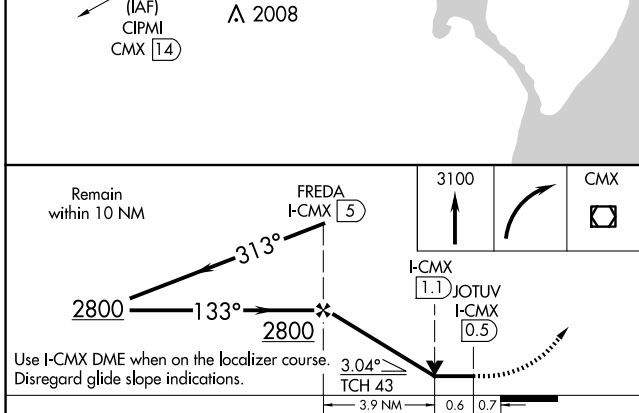
ASOS 125.675	MINNEAPOLIS CENTER 133.55 379.1	UNICOM 122.7 (CTAF) 0
------------------------	---	---------------------------------



EC-1, 20 MAR 2025 to 17 APR 2025

EC-1, 20 MAR 2025 to 17 APR 2025

ELEV 1095	D TDZE 1095
-----------	--------------------



CATEGORY	A	B	C	D
S- LOC 14	1540-1	445 (500-1)	1540-1 1/4 445 (500-1 1/4)	1540-1 1/2 445 (500-1 1/2)
C CIRCLING	1620-1 525 (600-1)	1660-1 565 (600-1)	1700-1 3/4 605 (700-1 3/4)	1820-2 1/4 725 (800-2 1/4)

MIRL Rwy 7-25 **0**
REIL Rws 7, 14 and 25 **0**
HIRL Rwy 14-32 **0**