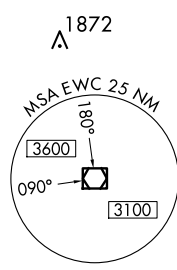
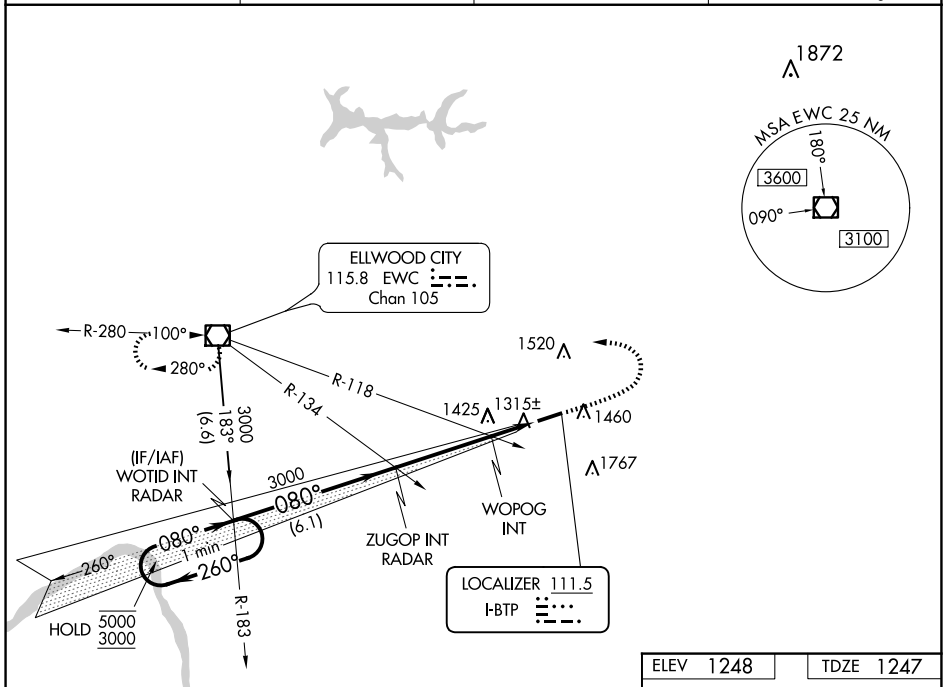


LOC I-BTP 111.5	APP CRS 080°	Rwy Idg 4801
		TDZE 1247
		Apt Elev 1248

ILS or LOC RWY 8

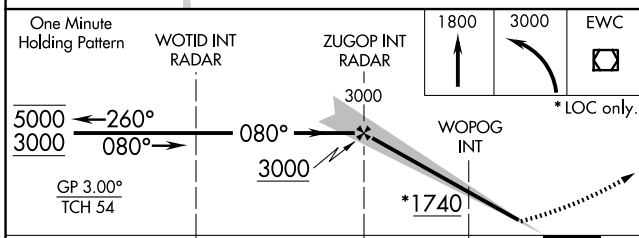
PITTSBURGH/BUTLER RGNL (BTP)

<p>▽ Rwy 8 helicopter visibility reduction below 3/4 SM NA. ▲ Circling Rwy 26 NA at night. S-ILS 8 inop table does not apply.</p>	<p>MALSF </p>	<p>MISSED APPROACH: Climb to 1800 then climbing left turn to 3000 direct EWC VOR/DME and hold.</p>	
<p>AWOS-3PT 121.450</p>	<p>PITTSBURGH APP CON 124.75 338.2</p>	<p>CLNC DEL 119.4</p>	<p>UNICOM 123.05 (CTAF) 0</p>



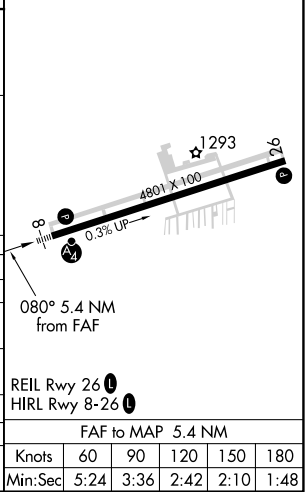
NE-4, 20 MAR 2025 to 17 APR 2025

NE-4, 20 MAR 2025 to 17 APR 2025



ELEV 1248	TDZE 1247
-----------	-----------

CATEGORY	A	B	C	D
S-ILS 8	1497-3/4 250 (300-3/4)			
S-LOC 8	1740-3/4	493 (500-3/4)	1740-1 1/8	493 (500-1 1/8)
C CIRCLING	1820-1	572 (600-1)	2080-2 1/2 832 (900-2 1/2)	2080-2 3/4 832 (900-2 3/4)
WOPOG FIX MINIMUMS (DUAL VOR RECEIVERS REQUIRED)				
S-LOC 8	1580-3/4 333 (400-3/4)			
C CIRCLING	1820-1	572 (600-1)	2080-2 1/2 832 (900-2 1/2)	2080-2 3/4 832 (900-2 3/4)



FAF to MAP 5.4 NM					
Knots	60	90	120	150	180
Min:Sec	5:24	3:36	2:42	2:10	1:48