

WAAS CH 86212 W22A	APP CRS 219°	Rwy Idg TDZE 322 Apt Elev 322	8001
--	------------------------	---	-------------

RNAV (GPS) RWY 22

MILLINGTON/MEMPHIS (NQA)

RNP APCH - GPS.

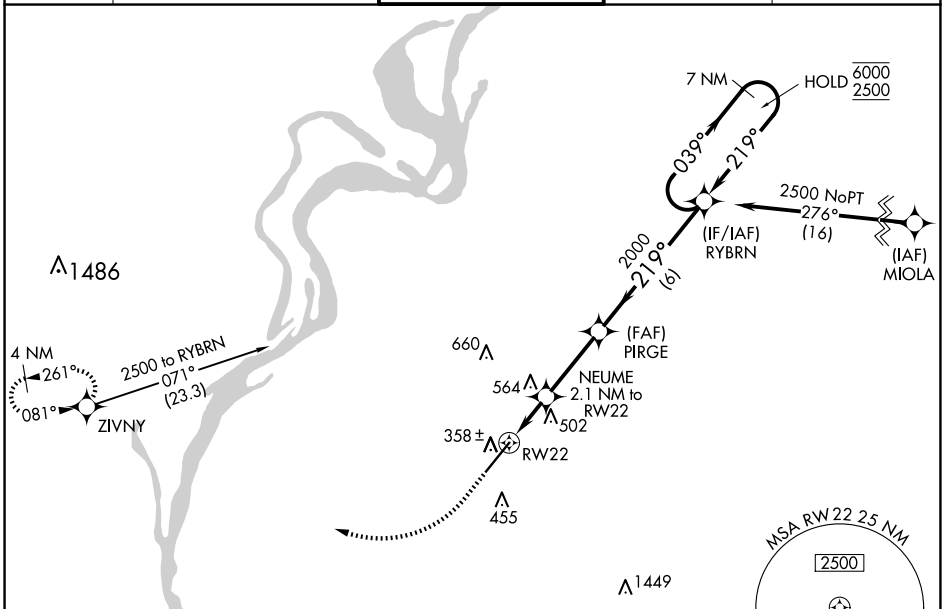
- ▼ For uncompensated Baro-VNAV systems, LNAV/VNAV NA below -15°C or above 54°C.
- ▲ For inop ALS, increase LPV Cat E visibility to ¾ SM, LNAV/VNAV all Cats visibility to 1½ SM, and LNAV Cat E visibility to 1½ SM.

MALSR

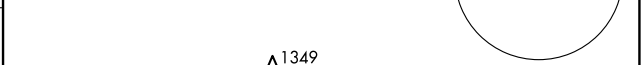
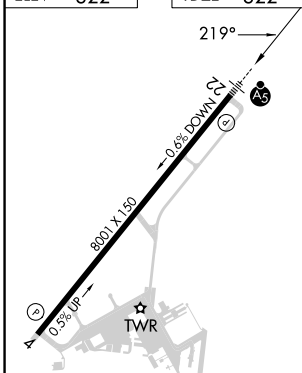


MISSED APPROACH:
Climb to 840 then climbing right turn to 2500 direct ZIVNY and hold.

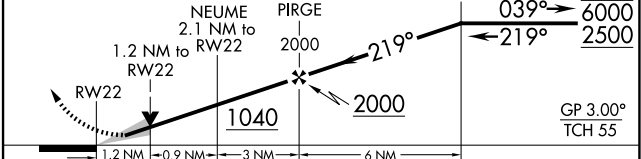
AWOS-3 118.925	MEMPHIS APP CON 119.1 291.6 125.8 338.3	MILLINGTON TOWER ★ 120.25 (CTAF) 0 340.2	GND CON 121.375	UNICOM 122.95
--------------------------	---	--	---------------------------	-------------------------



ELEV 322	TDZE 322
----------	----------



840 2500 ZIVNY VGSi and RNAV glidepath not coincident (VGSi Angle 3.00/TCH 67). 7 NM Holding Pattern



CATEGORY	A	B	C	D	E
LPV DA	522-½		200 (200-½)		
LNAV/VNAV DA	784-1		462 (500-1)		
LNAV MDA	780-½	458 (500-½)	780-¾	458 (500-¾)	
<input checked="" type="checkbox"/> CIRCLING	800-1 478 (500-1)	820-1 498 (500-1)	920-1½ 598 (600-1½)	960-2 638 (700-2)	960-2¼ 638 (700-2¼)

REIL Rwy 22
REIL Rwy 4
HIRL Rwy 4-22

SE-1, 20 MAR 2025 to 17 APR 2025

SE-1, 20 MAR 2025 to 17 APR 2025