

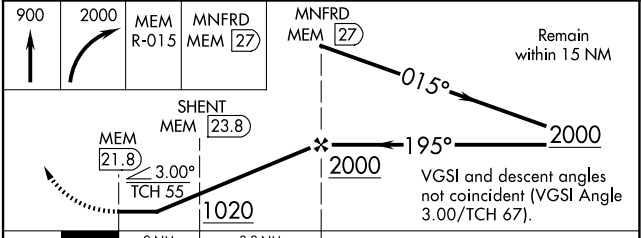
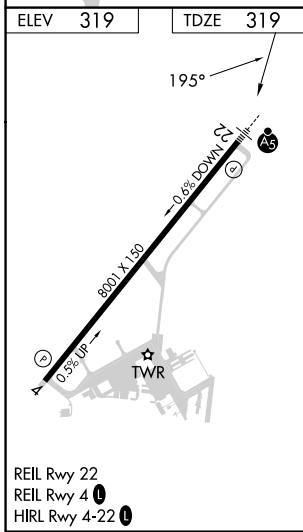
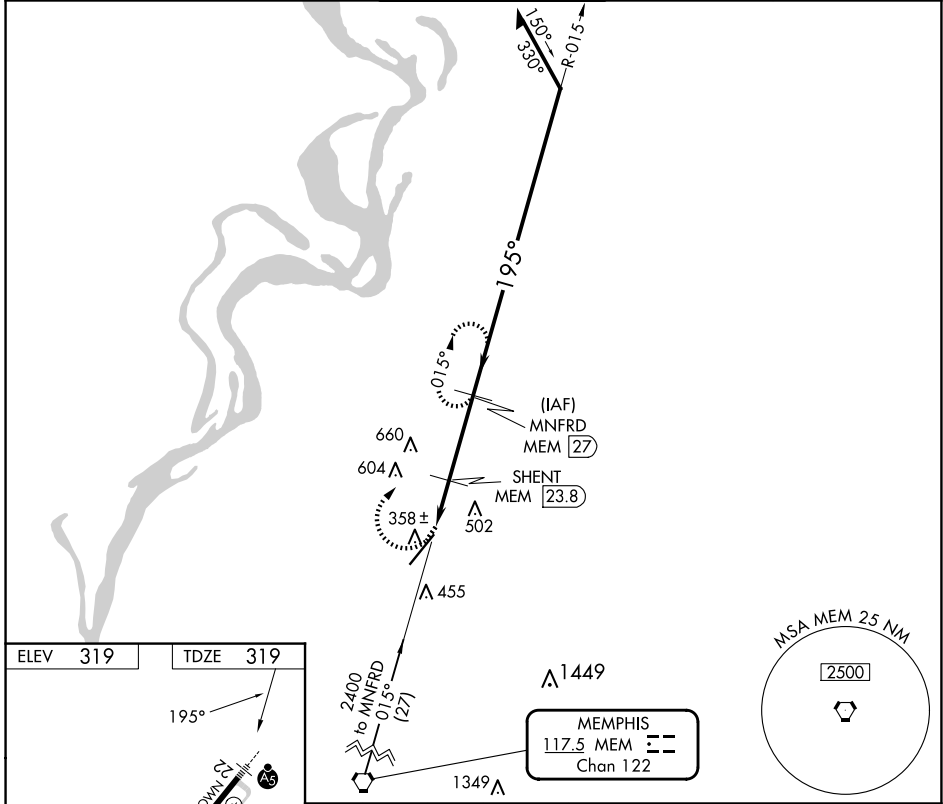
VORTAC MEM <b>117.5</b> Chan <b>122</b>	APP CRS <b>195°</b>	Rwy Idg TDZE Apt Elev	<b>8001</b> <b>319</b> <b>319</b>
---	------------------------	-----------------------------	---

# VOR or TACAN RWY 22

MILLINGTON/MEMPHIS (NQA)

DME required.	MALSR	MISSED APPROACH: Climb to 900, then descending right turn to 2000 on MEM VORTAC R-015 to MNFRD/27 DME and hold, continue climb-in-hold to 2000.
<p>▼ Rwy 22 helicopter visibility reduction below ¼ SM NA.</p> <p>▲ Inop table does not apply.</p>		

AWOS-3 <b>118.925</b>	MEMPHIS APP CON <b>119.1 291.6</b> <b>125.8 338.3</b> (176°-355°) (356°-175°)	MILLINGTON TOWER ★ <b>120.25 (CTAF) 0 340.2</b>	GND CON <b>121.375</b>	UNICOM <b>122.95</b>
--------------------------	---	--	---------------------------	-------------------------



CATEGORY	A	B	C	D	E
S-22	880-1	561 (600-1)	880-1½	561 (600-1½)	
☑ CIRCLING	880-1	561 (600-1)	920-1¾ 601 (700-1¾)	960-2 641 (700-2)	960-2¼ 641 (700-2¼)

SE-1, 20 MAR 2025 to 17 APR 2025

SE-1, 20 MAR 2025 to 17 APR 2025