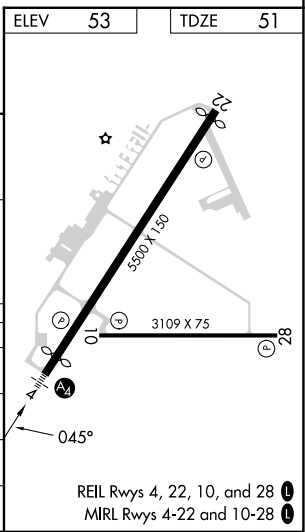
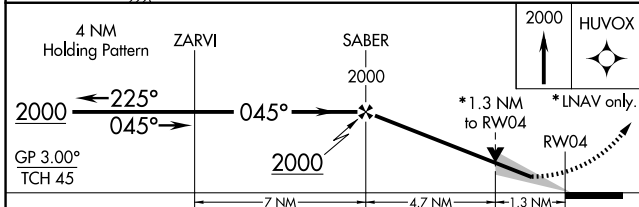
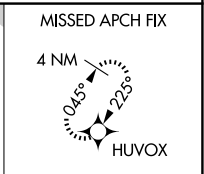
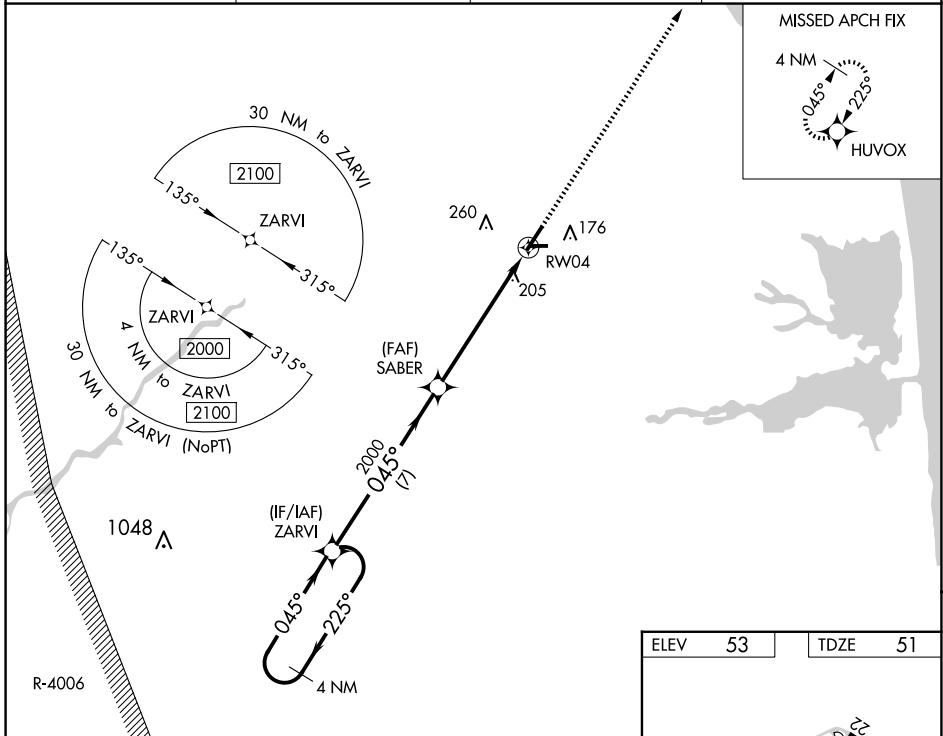


WAAS CH <b>65621</b> <b>W04A</b>	APP CRS <b>045°</b>	Rwy ldg <b>5130</b> TDZE <b>51</b> Apt Elev <b>53</b>
--	------------------------	---

# RNAV (GPS) RWY 4

DELAWARE COASTAL (GED)

RNP APCH - GPS.		MALS	MISSED APPROACH: Climb to 2000 direct HUVOX and hold.
<p>▼ Rwy 4 helicopter visibility reduction below 3/4 SM NA. For uncompensated Baro-VNAV systems, LNAV/VNAV NA below -13°C or above 54°C. For inop ALS, increase LNAV/VNAV all Cats and LNAV Cats C/D visibility 1/4 mile.</p>			
ASOS <b>118.375</b>	DOVER APP CON <b>132.425 257.875</b>	GCO <b>125.55</b>	UNICOM <b>123.0 (CTAF)</b>



CATEGORY	A	B	C	D
LPV DA		355-3/4	304 (400-3/4)	
LNAV/VNAV DA		503-1 1/4	452 (500-1 1/4)	
LNAV MDA	520-3/4	469 (500-3/4)	520-1 1/8	469 (500-1 1/8)
CIRCLING	560-1	580-1	720-1 3/4	720-2
	507 (600-1)	527 (600-1)	667 (700-1 3/4)	667 (700-2)

NE-3, 20 MAR 2025 to 17 APR 2025

NE-3, 20 MAR 2025 to 17 APR 2025