

(ZETTR4.ZETTR) 24137

# ZETTR FOUR DEPARTURE (RNAV)

AL-940 (FAA)

GROSSE ILE MUNI (ONZ)  
DETROIT/GROSSE ILE, MICHIGAN

DETROIT DEP CON  
134.3 284.0  
AWOS-3  
119.675  
CTAF  
123.0

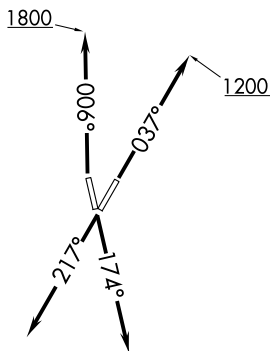
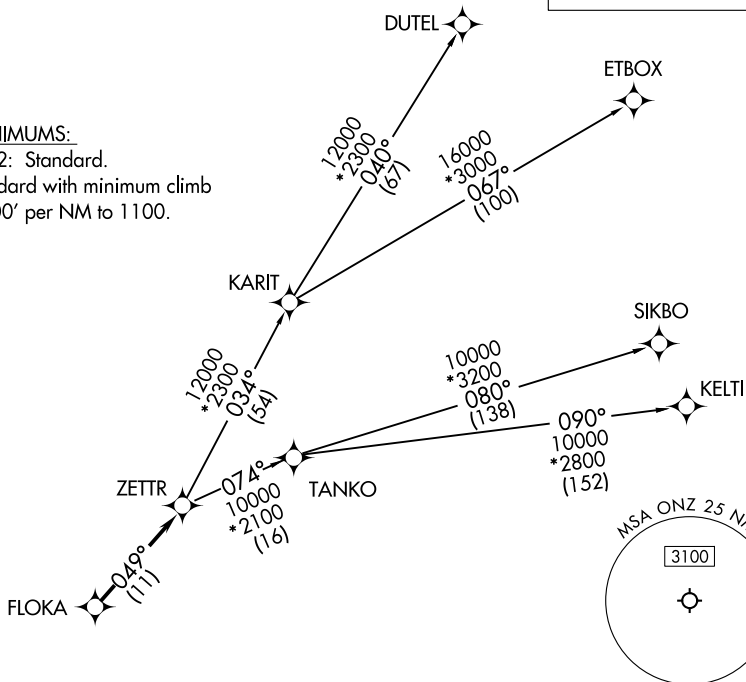
RNAV 1 - DME/DME/IRU or GPS.  
RADAR required.

**TOP ALTITUDE:  
ASSIGNED BY ATC**

### TAKEOFF MINIMUMS:

Rwys 4, 17, 22: Standard.

Rwy 35: Standard with minimum climb  
of 500' per NM to 1100.



NOTE: Turbojet departures at/above 10000, maintain 280K until advised by ATC.  
NOTE: TANKO Transition: For use by CYYZ area arrivals only, or as assigned by ATC.

NOTE: Chart not to scale.

### DEPARTURE ROUTE DESCRIPTION

**TAKEOFF RUNWAY 4:** Climb on heading 037° to 1200 then as assigned by ATC, thence....

**TAKEOFF RUNWAY 17:** Climb on heading 174° or as assigned by ATC, thence....

**TAKEOFF RUNWAY 22:** Climb on heading 217° or as assigned by ATC, thence....

**TAKEOFF RUNWAY 35:** Climb on heading 006° to 1800 then as assigned by ATC, thence....

....for RADAR vectors to FLOKA, then on track 049° to ZETTR, then on (transition). Maintain ATC assigned altitude, expect filed altitude 10 minutes after departure.

**DUTEL TRANSITION (ZETTR4.DUTEL):**

**ETBOX TRANSITION (ZETTR4.ETBOX):**

**KELTI TRANSITION (ZETTR4.KELTI):**

**SIKBO TRANSITION (ZETTR4.SIKBO):**

**TANKO TRANSITION (ZETTR4.TANKO):**

**ZETTR FOUR DEPARTURE (RNAV)**  
(ZETTR4.ZETTR) 16MAY24

DETROIT/GROSSE ILE, MICHIGAN  
GROSSE ILE MUNI (ONZ)

EC-1, 20 MAR 2025 to 17 APR 2025

EC-1, 20 MAR 2025 to 17 APR 2025