

WAAS CH <b>72840</b> <b>W02A</b>	APP CRS <b>025°</b>	Rwy ldg TDZE Apt Elev	<b>5529</b> <b>3906</b> <b>3908</b>
--	------------------------	-----------------------------	---

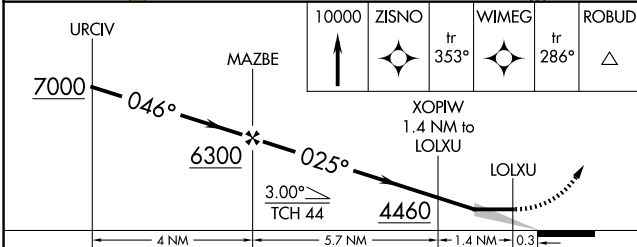
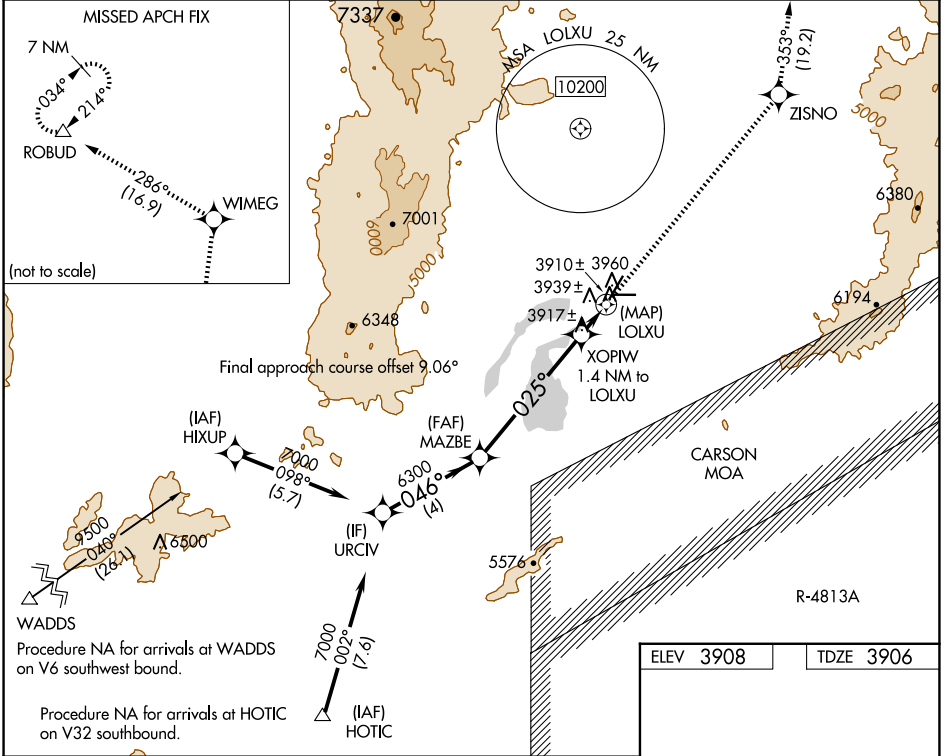
# RNAV (GPS) RWY 2

DERBY FLD (LOL)

**⚠** Circling NA northwest of Rwy 2-20.  
DME/DME RNP-0.3 NA.

**⚠** MISSED APPROACH: Climb to 10000 direct ZISNO and on track 353° to WIMEG and on track 286° to ROBUD and hold, continue climb-in-hold to 10000.

ASOS <b>120.675</b>	OAKLAND CENTER <b>128.8 285.5</b>	UNICOM <b>122.8 (CTAF) 0</b>
------------------------	--------------------------------------	---------------------------------



ELEV 3908	TDZE 3906
<b>REIL</b> Rwy 2 and 20 <b>0</b> <b>MIRL</b> Rwy 2-20 <b>0</b>	

URCIV	MAZBE	10000	ZISNO	WIMEG	ROBUD
7000	6300	↑	tr 353°	tr 286°	△
4 NM		5.7 NM		1.4 NM	0.3 NM
CATEGORY	A	B	C	D	
LP MDA	4160-1		254 (300-1)		
LNAV MDA	4200-1		294 (300-1)		
<b>C</b> CIRCLING	4280-1 372 (400-1)	4360-1 452 (500-1)	4540-1¾ 632 (700-1¾)	4680-2½ 772 (800-2½)	

SW-4, 20 MAR 2025 to 17 APR 2025

SW-4, 20 MAR 2025 to 17 APR 2025