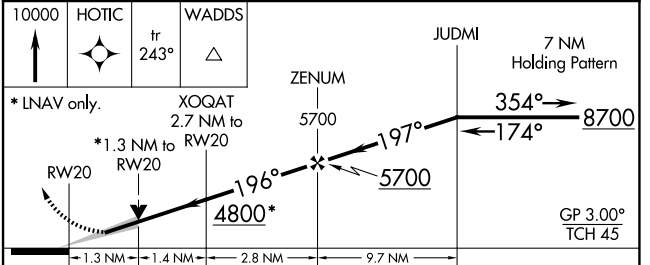
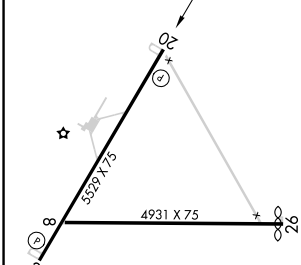
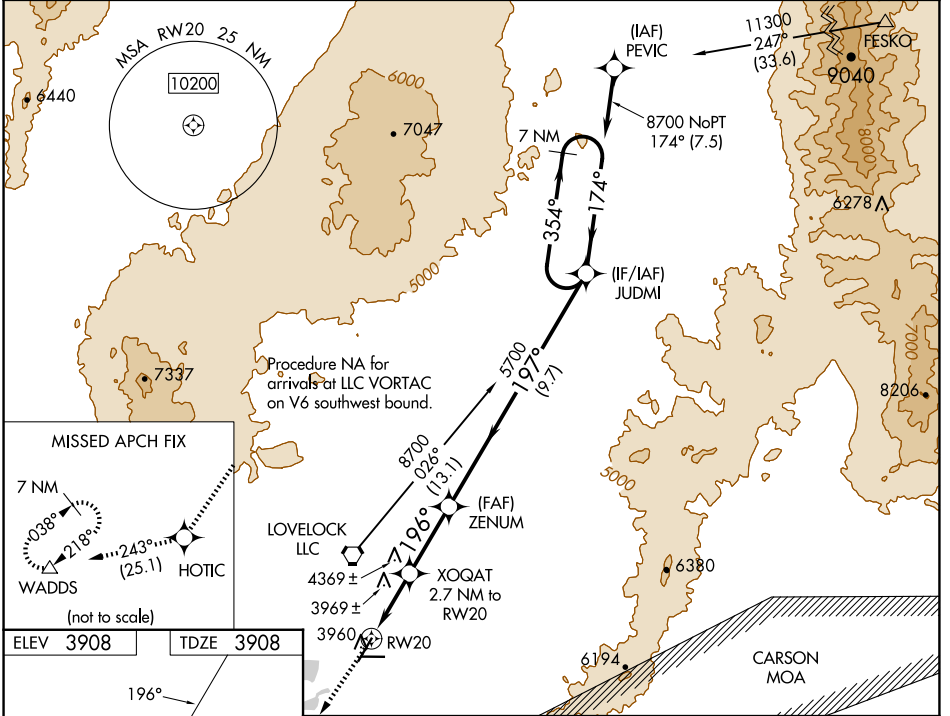


WAAS CH 78240 W20A	APP CRS 196°	Rwy Idg TDZE 3908 Apt Elev 3908
--	------------------------	---

RNAV (GPS) RWY 20

DERBY FLD (LOL)

<p>For uncompensated Baro-VNAV systems, LNAV/VNAV NA below -19°C (-2°F) or above 52°C (127°F). Circling NA northwest of Rwy 2-20. DME/DME RNP-0.3 NA.</p>	<p>MISSED APPROACH: Climb to 10000 direct HOTIC and on track 243° to WADDS and hold.</p>	
	<p>ASOS 120.675</p>	<p>OAKLAND CENTER 128.8 285.5</p>



ELEV 3908	TDZE 3908				
10000	HOTIC	tr 243°	WADDS	JUDMI	7 NM Holding Pattern
* LNAV only.					
RW20		XOQAT 2.7 NM to RW20	5700	5700	8700
1.3 NM		1.4 NM	2.8 NM	9.7 NM	
GP 3.00° TCH 45					
CATEGORY	A	B	C	D	
LPV DA	4158-1		250 (300-1)		
LNAV/VNAV DA	4249-1½		341 (400-1½)		
LNAV MDA	4360-1	452 (500-1)	4360-1¾	452 (500-1¾)	
CIRCLING	4360-1	452 (500-1)	4540-1¾	4680-2½	
			632 (700-1¾)	772 (800-2½)	

SW-4, 20 MAR 2025 to 17 APR 2025

SW-4, 20 MAR 2025 to 17 APR 2025