

LOC/DME I-RFD 109.3 Chan 30	APP CRS 188°	Rwy Idg 8099 TDZE 736 Apt Elev 742
---	------------------------	---

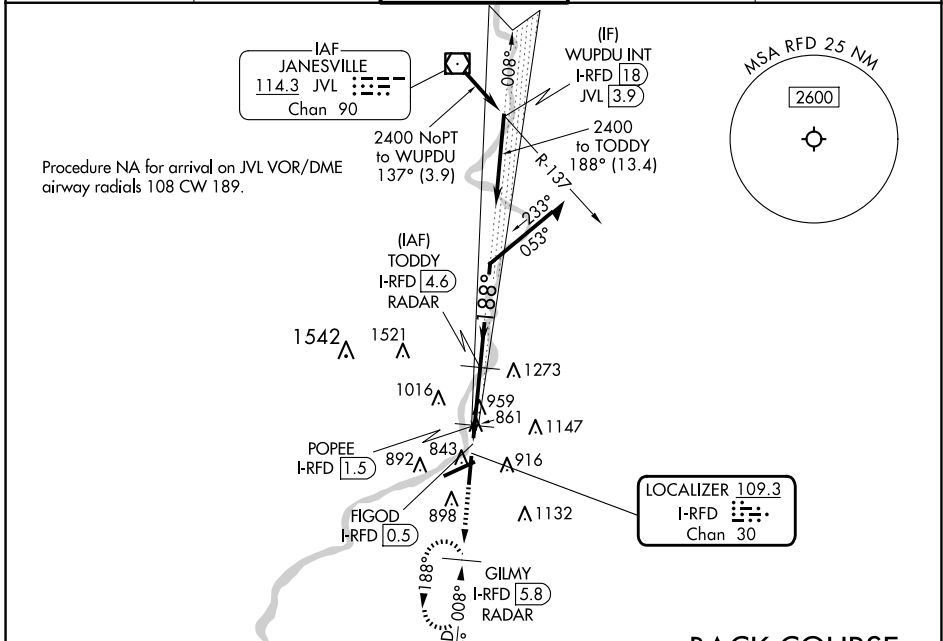
LOC BC RWY 19

CHICAGO/ROCKFORD INTL (RFD)

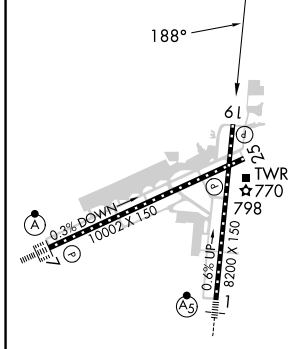
DME or RADAR required.

MISSED APPROACH: Climb to 2500 on I-RFD localizer course S (188°) to GILMY 5.8 DME/RADAR and hold, continue climb-in-hold to 2500.

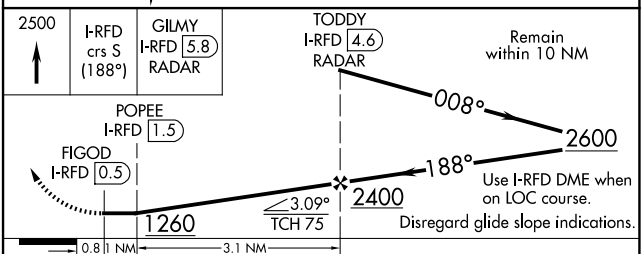
ATIS 127.6	ROCKFORD APP CON 121.0 327.0	ROCKFORD TOWER 118.1 290.375	GND CON 121.9 290.375	CLNC DEL 119.25
----------------------	--	--	---------------------------------	---------------------------



ELEV 742	D	TDZE 736
----------	----------	----------



Knots	60	90	120	150	180
Min:Sec	4:06	2:44	2:03	1:38	1:22



CATEGORY	A	B	C	D
S-19	1260-1 524 (600-1)		1260-1½ 524 (600-1½)	
C CIRCLING	1260-1 518 (600-1)	1280-1 538 (600-1)	1320-1½ 578 (600-1½)	1460-2¼ 718 (800-2¼)
POPEE FIX MINIMUMS (DME REQUIRED)				
S-19	1140-1 404 (400-1)		1140-1⅛ 404 (400-1⅛)	
C CIRCLING	1220-1 478 (500-1)	1280-1 538 (600-1)	1320-1½ 578 (600-1½)	1460-2¼ 718 (800-2¼)