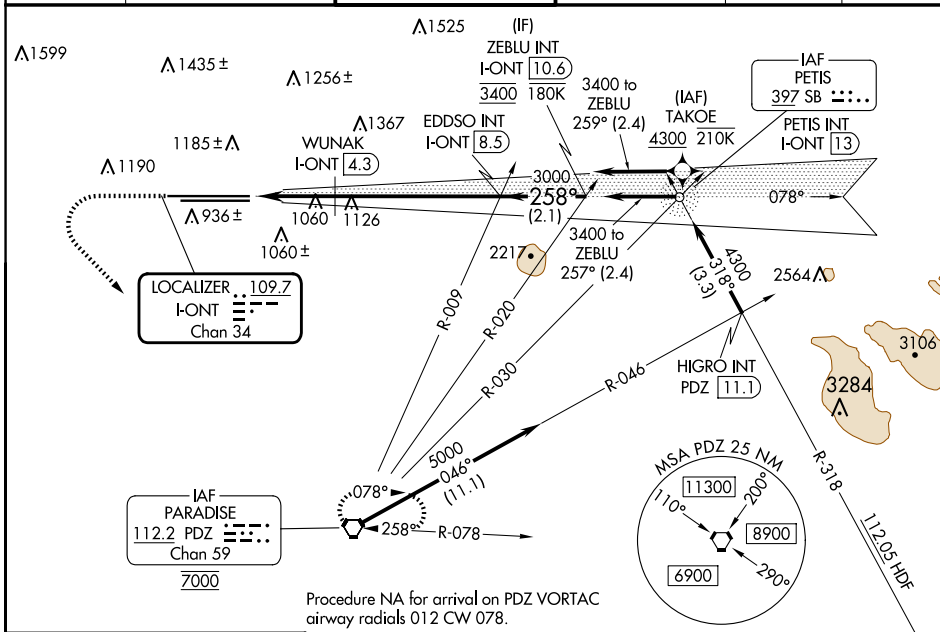


LOC/DME I-ONT 109.7 Chan 34	APP CRS 258°	Rwy Idg 26R 26L	TDZE 12197 932	10200 926
RNP APCH - GPS. From TAKOE.		Apt Elev 26R 26L	944	944

ILS or LOC RWY 26R

ONTARIO INTL (ONT)

MISSED APPROACH: Climb to 2800 then climbing left turn to 5400 direct PDZ VORTAC and hold, continue climb-in-hold to 5400.		ALSF-2 Rwy 26R	ALSF-2 Rwy 26L		
D-ATIS 124.25	SOCAL APP CON 127.0 318.2	ONTARIO TOWER 120.6 360.775	GND CON 121.9 257.8	CLNC DEL 132.9	CPDLC



ELEV 944	D	TDZE 26R 932 TDZE 26L 926	2800	5400	PDZ	VGSI and ILS glidepath not coincident (VGSI Angle 3.00/TCH 75).	ZEBLU INT I-ONT 10.6	
		WUNAK I-ONT 4.3 EDDSO INT I-ONT 8.5 I-ONT 2.2 I-ONT 3.3	1680 3000 3400	258° 3000 3000	GS 3.00° TCH 60	1.2 NM 1 NM 4.1 NM 2.1 NM	CATEGORY S-ILS 26R S-LOC 26R SIDESTEP 26L CIRCLING WUNAK FIX MINIMUMS (DME REQUIRED) S-LOC 26R	A B C D 1132/18 200 (200-½) 1680/24 748 (800-½) 1680/40 748 (800-¾) 1680-1¾ 754 (800-1¾) 1680-2 754 (800-2) 1680-1 736 (800-1) 1680-1¼ 736 (800-1¼) 1680-2¼ 736 (800-2¼) 1680-2½ 736 (800-2½) 1320/24 388 (400-½) 1320/35 388 (400-⅝)
TDZ/CL Rwys 8L, 26L and 26R HIRL Rwys 8L-26R and 8R-26L FAF to MAP 6.3 NM		TWR 1039	60 90 120 150 180	6:18 4:12 3:09 2:31 2:06				

SW-3, 20 MAR 2025 to 17 APR 2025

SW-3, 20 MAR 2025 to 17 APR 2025