

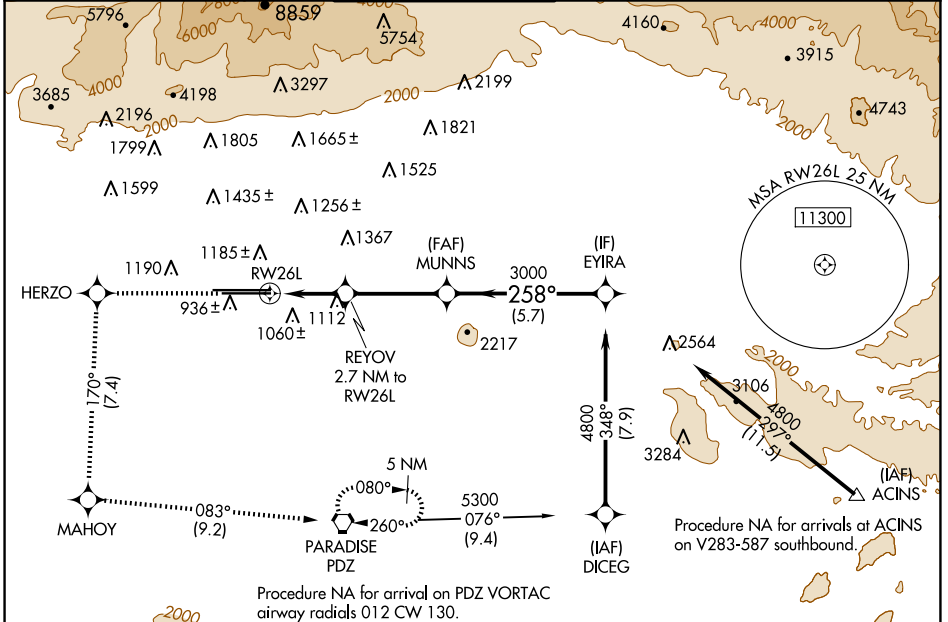
WAAS CH <b>90407</b> <b>W26B</b>	APP CRS <b>258°</b>	Rwy Idg <b>10200</b> TDZE <b>926</b> Apt Elev <b>944</b>
--	------------------------	--

# RNAV (GPS) Y RWY 26L

ONTARIO INTL (ONT)

RNP APCH - GPS.		ALSF-2	MISSED APPROACH: Climb to 4700 direct HERZO and on track 170° to MAHOY and on track 083° to PDZ VORTAC, continue climb in hold to 4700.		
<p>▼ Circling NA north of Rwy 8L-26R. For uncompensated Baro-VNAV systems, procedure NA below 2°C or above 54°C. For inop ALS, increase all Cats LNAV/VNAV visibility to RVR 5500.</p>					

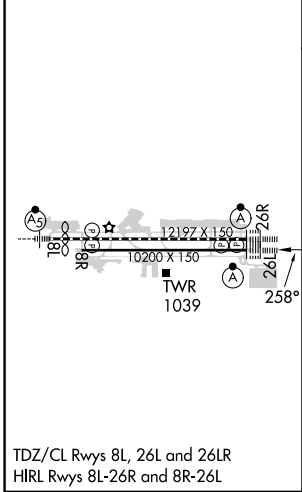
D-ATIS <b>124.25</b>	SOCAL APP CON <b>127.0 318.2</b>	ONTARIO TOWER <b>120.6 360.775</b>	GND CON <b>121.9 257.8</b>	CLNC DEL <b>132.9</b>	CPDLC
-------------------------	-------------------------------------	---------------------------------------	-------------------------------	--------------------------	-------



SW-3, 20 MAR 2025 to 17 APR 2025

SW-3, 20 MAR 2025 to 17 APR 2025

ELEV 944	<b>D</b>	TDZE 926
----------	----------	----------



4700	HERZO	MAHOY	PDZ	VGSi and RNAV glidepath not coincident (VGSi Angle 3.00/TCH 74).	
↑	tr 170°	tr 083°	MUNNNS	EYIRA	
	1.2 NM	1.5 NM	3.6 NM	5.7 NM	
CATEGORY	A	B	C	D	
LPV DA		1126/18	200 (200-½)		
LNAV/VNAV DA		1267/30	341 (400-¾)		
LNAV MDA	1380/24	454 (500-½)	1380/45	454 (500-¾)	
<b>C</b> CIRCLING	1400-1	456 (500-1)	1500-1½	1540-2	596 (600-2)