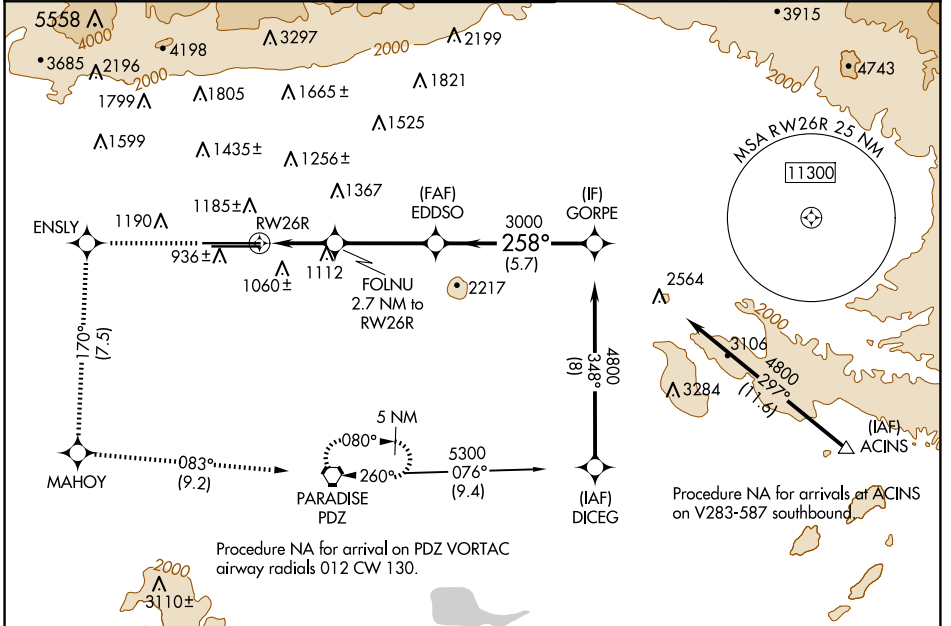


WAAS CH 53406 W26A	APP CRS 258°	Rwy Idg 12197 TDZE 932 Apt Elev 944
--	------------------------	--

RNAV (GPS) Y RWY 26R

ONTARIO INTL (ONT)

RNP APCH - GPS.		ALSF-2	MISSED APPROACH: Climb to 4700 direct ENSLY and on track 170° to MAHOY and on track 083° to PDZ VORTAC and hold, continue climb-in-hold to 4700.					
▼ Circling NA north of Rwy 8L-26R. For uncompensated Baro-VNAV systems, procedure NA below 2°C or above 54°C.			D-ATIS 124.25	SOCAL APP CON 127.0 318.2	ONTARIO TOWER 120.6 360.775	GND CON 121.9 257.8	CLNC DEL 132.9	CPDLC



SW-3, 20 MAR 2025 to 17 APR 2025

SW-3, 20 MAR 2025 to 17 APR 2025

ELEV 944		TDZE 932			
4700	↑	ENSLY	MAHOY	PDZ	VGSI and RNAV glidepath not coincident (VGSI Angle 3.00/TCH 75).
↑	tr 170°	tr 083°			
EDDSO		GORPE			
FOLNU 2.7 NM to RWY 26R		3000		4800	
1.2 NM to RWY 26R		1840		3000	
1.2 NM		1.5 NM		3.6 NM	
1.2 NM		1.5 NM		5.7 NM	
GP 3.00°		TCH 60			
CATEGORY	A	B	C	D	
LPV DA	1132/18		200 (200-½)		
LNAV/VNAV DA	1267/55		335 (400-1)		
LNAV MDA	1380/24 448 (500-½)		1380/45 448 (500-¾)		
CIRCLING	1400-1 456 (500-1)		1500-1½ 556 (600-1½)		1540-2 596 (600-2)
TDZ/CL Rwys 8L, 26L and 26R HIRL Rwys 8L-26R and 8R-26L					

