


WAAS CH 45807 W08B	APP CRS 078°	Rwy Idg 11200 TDZE 944 Apt Elev 944
--	------------------------	--

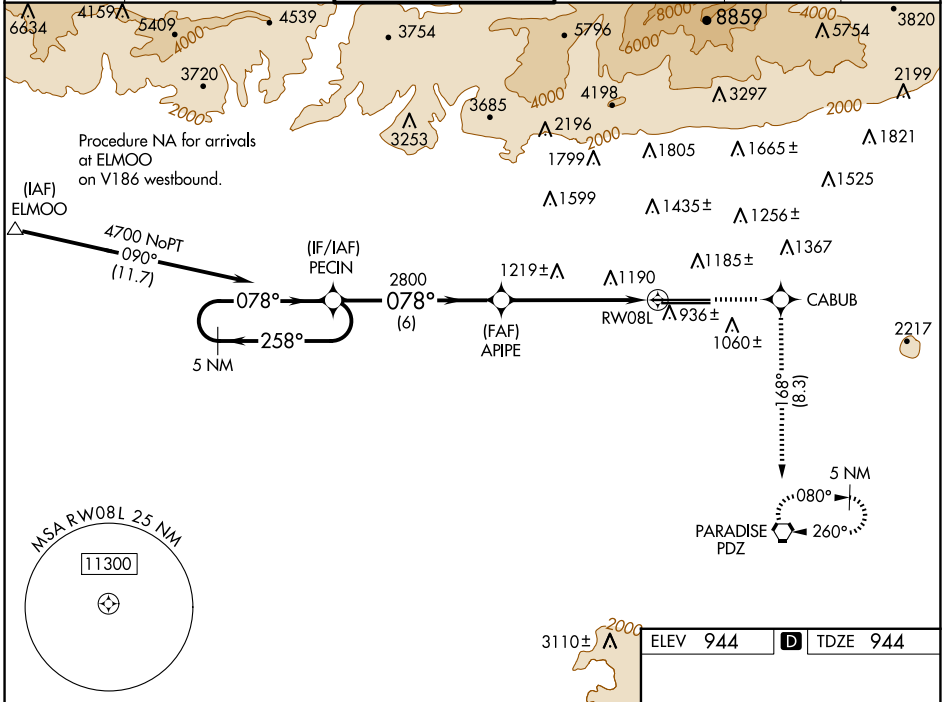
RNAV (GPS) Y RWY 8L





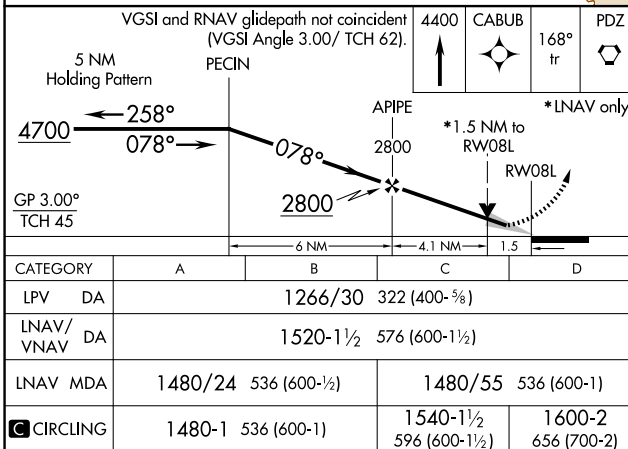
ONTARIO INTL (ONT)

▽ For uncompensated Baro-VNAV systems, LNAV/VNAV NA below -16°C (4°F) or above 47°C (116°F). Circling NA north of Rwy 8L-26R.
DME/DME RNP -0.3 NA. For inoperative MALSR increase LPV visibility all Cats to RVR 6000.

MALSR  **MISSED APPROACH:** Climb to 4400 direct CABUB and on track 168° to PDZ VORTAC and hold, continue climb-in-hold to 4700.

D-ATIS 124.25	SOCAL APP CON 127.0 318.2	ONTARIO TOWER 120.6 360.775	GND CON 121.9 257.8	CLNC DEL 132.9	CPDLC
-------------------------	-------------------------------------	---------------------------------------	-------------------------------	--------------------------	-------



VGSi and RNAV glidepath not coincident (VGSi Angle 3.00°/ TCH 62).		4400	CABUB	168° tr	PDZ
5 NM Holding Pattern					
GP 3.00° TCH 45		*LNAV only.			
<p>4700 ← 258°</p> <p>078° →</p> <p>PECIN</p> <p>2800</p> <p>APIPE</p> <p>2800</p> <p>1.5 NM to RWY 08L</p> <p>6 NM</p> <p>4.1 NM</p> <p>1.5</p>					
CATEGORY	A	B	C	D	
LPV DA	1266/30		322 (400-5%)		
LNAV/VNAV DA	1520-1½		576 (600-1½)		
LNAV MDA	1480/24 536 (600-½)		1480/55 536 (600-1)		
C CIRCLING	1480-1 536 (600-1)		1540-1½ 596 (600-1½)		1600-2 656 (700-2)
TDZ/CL Rwys 8L, 26R and 26L HIRL Rwys 8L-26R and 8R-26L					

SW-3, 20 MAR 2025 to 17 APR 2025

SW-3, 20 MAR 2025 to 17 APR 2025