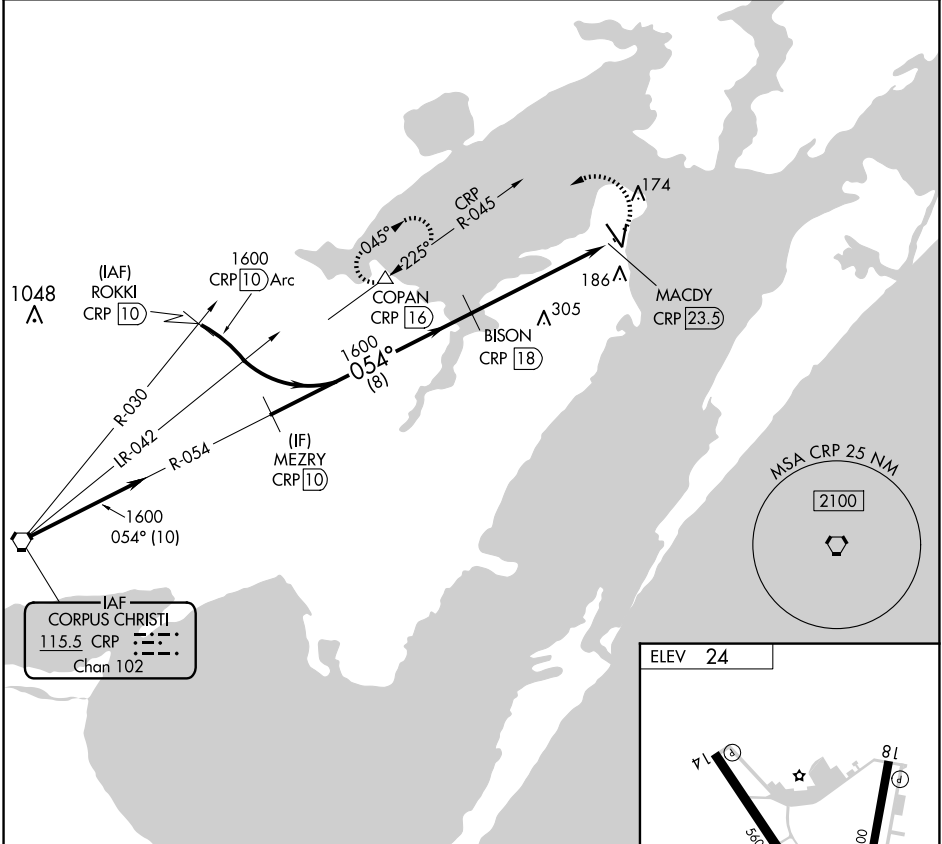


VORTAC CRP 115.5 Chan 102	APP CRS 054°	Rwy Idg TDZE Apt Elev	N/A N/A 24
---	------------------------	-----------------------------	---------------------------------------

VOR or TACAN-A
ARANSAS COUNTY (RKP)

DME required.		MISSED APPROACH: Climbing left turn to 1600 on heading 360° and CRP VORTAC R-045 to COPAN/16 DME and hold.	
---------------	--	--	--

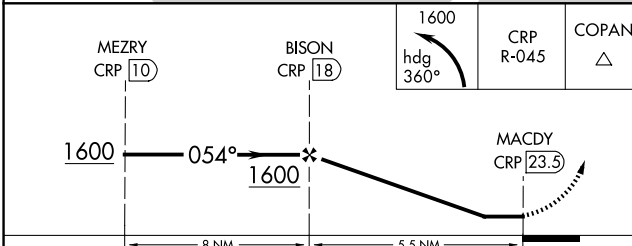
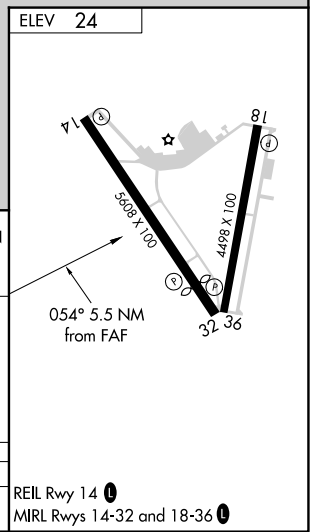
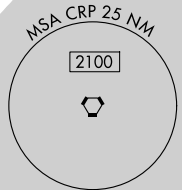
ASOS 119.275	CORPUS APP CON 120.9 348.725	CLNC DEL 121.7	UNICOM 123.05 (CTAF) 1
------------------------	--	--------------------------	---



SC-3, 20 MAR 2025 to 17 APR 2025

SC-3, 20 MAR 2025 to 17 APR 2025

IAF
CORPUS CHRISTI
115.5 CRP
Chan 102



CATEGORY	A	B	C	D
CIRCLING	800-1 776 (800-1)	800-1¼ 776 (800-1¼)	800-2¼ 776 (800-2¼)	NA

REIL Rwy 14 **1**
MIRL Rwys 14-32 and 18-36 **1**