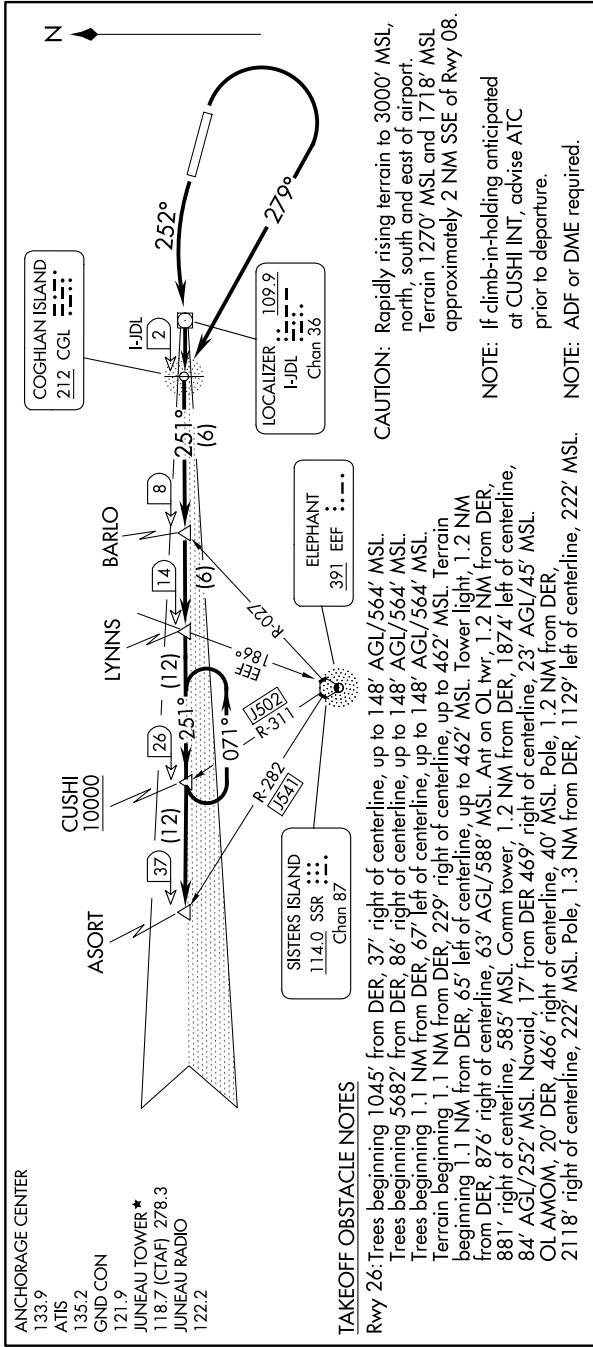


# ASORT TWO DEPARTURE

AL-1191 (FAA)

JUNEAU INTL (JNU)(PAJN)  
JUNEAU, ALASKA

AK, 20 FEB 2025 to 17 APR 2025



### TAKEOFF OBSTACLE NOTES

Rwy 26: Trees beginning 1045' from DER, 37' right of centerline, up to 148' AGL/564' MSL. Trees beginning 5682' from DER, 86' right of centerline, up to 148' AGL/564' MSL. Trees beginning 1.1 NM from DER, 67' left of centerline, up to 148' AGL/564' MSL. Terrain beginning 1.1 NM from DER, 229' right of centerline, up to 462' MSL. Terrain beginning 1.1 NM from DER, 65' left of centerline, up to 462' MSL. Tower light, 1.2 NM from DER, 876' right of centerline, 63' AGL/588' MSL. Ant on OL tower, 1.2 NM from DER, 881' right of centerline, 585' MSL. Comm tower, 1.2 NM from DER, 1874' left of centerline, 84' AGL/252' MSL. Navaid, 17' from DER 469' right of centerline, 23' AGL/45' MSL. OL AMOM, 20' DER, 466' right of centerline, 40' MSL. Pole, 1.2 NM from DER, 2118' right of centerline, 222' MSL. Pole, 1.3 NM from DER, 1129' left of centerline, 222' MSL.

**CAUTION:** Rapidly rising terrain to 3000' MSL, north, south and east of airport. Terrain 1270' MSL and 1718' MSL approximately 2 NM SSE of Rwy 08.

**NOTE:** If climb-in-holding anticipated at CUSHI INT, advise ATC prior to departure.

**NOTE:** ADF or DME required.

### DEPARTURE ROUTE DESCRIPTION

**TAKEOFF RUNWAY 8:** Climbing right turn as soon as practical. Climb in visual conditions direct CGL NDB or heading 279° to I-JDL West course/2 DME (visual conditions must be maintained from takeoff until established over CGL NDB or I-JDL West course/2 DME at or above 1000 MSL), thence . . . .

**TAKEOFF RUNWAY 26:** Climbing left turn heading 252° to CGL NDB or I-JDL West course/2 DME, thence . . . .

. . . . via I-JDL West course or 251° bearing from CGL NDB to cross CUSHI INT/I-JDL 26 DME at or above 10000, then on I-JDL West course or CGL NDB bearing 251° to ASORT INT/I-JDL 37 DME.

**TAKEOFF MINIMUMS**  
Rwy 26: Standard with minimum climb of 595' per NM to 800, then 360' per NM to 10000, or 600-2 with minimum of 360' per NM to 10000.  
Rwy 8: 1000-3 with minimum climb 350' per NM from 1000 to 10000.

NOTE: Chart not to scale.

AK, 20 FEB 2025 to 17 APR 2025