

LOC/DME I-JDL 109.9 Chan 36	APP CRS 071°	Rwy Idg TDZE 25 Apt Elev 25	8457
---	------------------------	---	-------------

LDA X RWY 8

JUNEAU INTL (JNU)(PAJN)

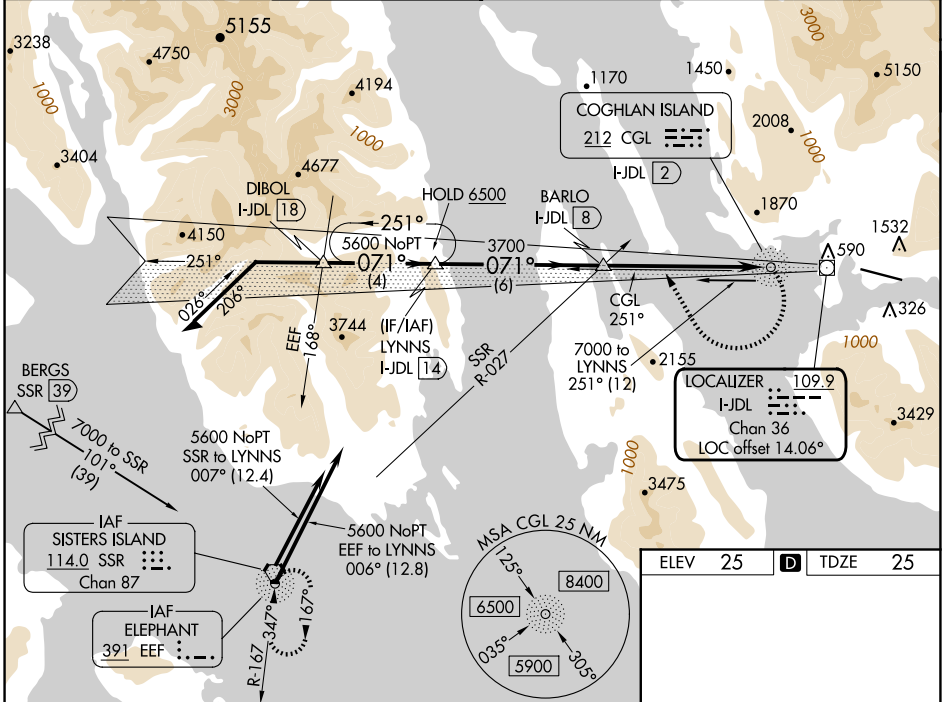
ADF required.

⚠ Circling to Rwy 26 NA at night. Circling NA north of Rwy 8-26. Rwy 8 helicopter visibility reduction below 1 SM NA. Inop table does not apply. When Juneau altimeter setting not received, procedure NA. CAUTION: Any go-around after passing MAP will not provide standard obstruction clearance. Circling Cat A night visibility minimum 5 SM, Circling Cat B, C, D night visibility minimum 10 SM. Straight-in Rwy 8 at night, operational VGSI required, remain on or above VGSI glidepath until threshold.

MALSIF

⚠ MISSED APPROACH: Immediate climbing right turn to 5600 on heading 310° and on CGL NDB bearing 251° to intercept SSR VORTAC R-027 direct SSR VORTAC or EEF NDB and hold.

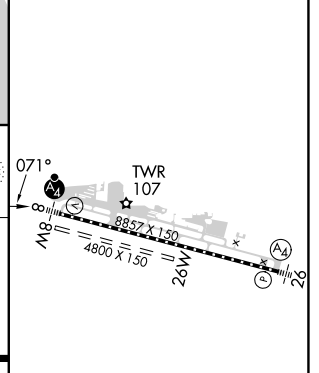
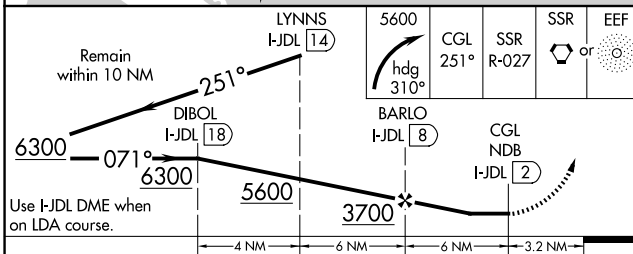
ATIS 135.2	ANCHORAGE CENTER 133.9	JUNEAU TOWER * 118.7 (CTAF) 0 278.3	GND CON 121.9	CLNC DEL 121.9	JUNEAU RADIO 122.2	UNICOM 122.95
----------------------	----------------------------------	--	-------------------------	--------------------------	------------------------------	-------------------------



AK, 20 FEB 2025 to 17 APR 2025

AK, 20 FEB 2025 to 17 APR 2025

ELEV 25	D	TDZE 25
---------	----------	---------



CATEGORY	A	B	C	D
S-LDA 8	3200-4 3175 (3200-4)			NA
CIRCLING	3200-4	3175 (3200-4)	3340-4 3315 (3400-4)	3700-4 3675 (3700-4)

RLS Rwy 8
REIL Rwy 8
REIL Rwy 26 **Ⓛ**
HIRL Rwy 8-26 **Ⓛ**