

WAAS CH 53525 W29A	APP CRS 295°	Rwy Idg TDZE Apt Elev	6720 33 36
----------------------------------------	------------------------	-----------------------------	---------------------------------------

RNAV (GPS) RWY 29

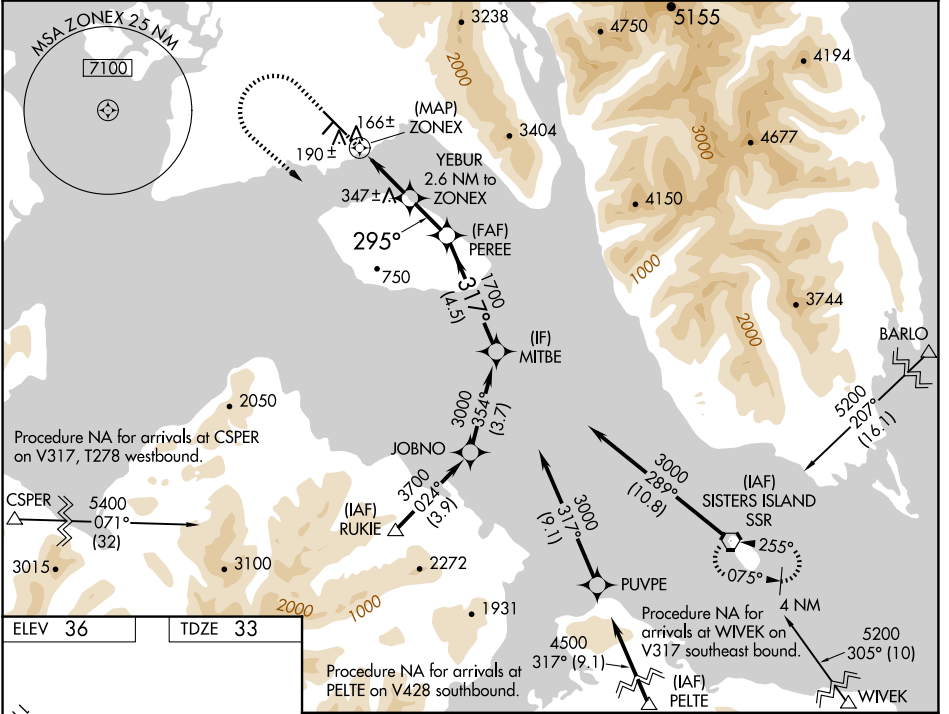
GUSTAVUS(GST)(PAGS)

RNP APCH.

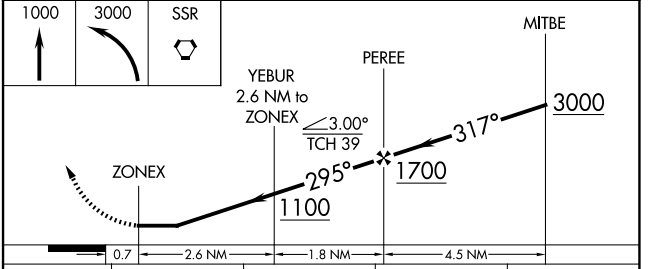
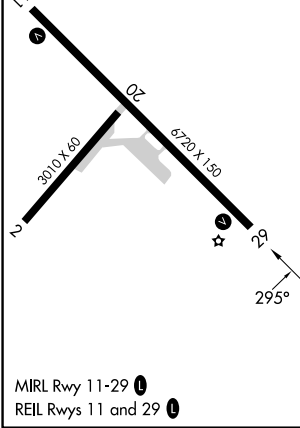
⚠ Circling NA northeast of Rwy 11-29.
⚠ Rwy 29 helicopter visibility reduction below 3/4 SM NA.
⚠ -17°C

MISSED APPROACH: (Do not exceed 210 KIAS until SSR VORTAC) Climb to 1000 then climbing left turn to 3000 direct SSR VORTAC and hold.

AWOS-3P 125.9	ANCHORAGE CENTER 133.2 360.65	JUNEAU RADIO 122.65	CTAF 122.5
-------------------------	-----------------------------------------	-------------------------------	----------------------



ELEV 36	TDZE 33
---------	---------



CATEGORY		A	B	C	D
LP	MDA	420-1	387 (400-1)	420-1 1/8	387 (400-1 1/8)
LNAV	MDA	660-1	627 (700-1)	660-1 3/4	627 (700-1 3/4)
C	CIRCLING	660-1	624 (700-1)	960-2 3/4 924 (1000-2 3/4)	1200-3 1164 (1200-3)

AK, 20 FEB 2025 to 17 APR 2025

AK, 20 FEB 2025 to 17 APR 2025