

DELTA JUNCTION/FORT GREELY, ALASKA

RNAV (GPS) RWY 19

APCH CRS	Rwy Idg	8000
187°	TDZE	1239
	Arprt Elev	1285

[USA]

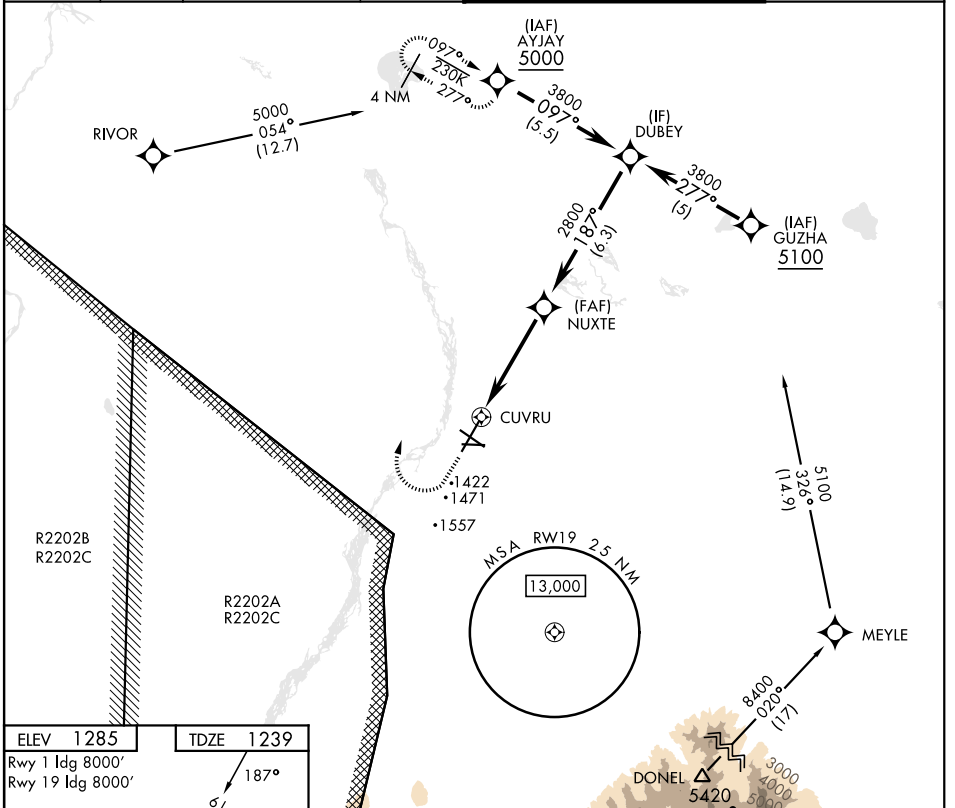
ALLEN AAF (PABI)

RNP APCH - GPS

MISSED APPROACH: Climbing right turn to 5000, direct AYJAY and hold.

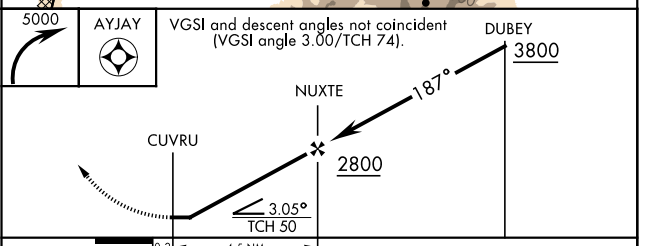
* Circling not authorized East of Rwy 1-19.

ATIS	ASOS	ANCHORAGE CENTER	CTAF	ALLEN TOWER *	GND CON
132.075	135.65	135.3 322.5	122.9	119.8 235.775 40.8 (E) FM	118.225 251.05



ELEV 1285	TDZE 1239
Rwy 1 Idg 8000'	
Rwy 19 Idg 8000'	

HIRL Rwy 1-19 and 11-29
MIRL Rwy 070°-250°
REIL Rwy 11-29



CATEGORY	A	B	C	D
LNAV MDA	1740-1 501 (500-1)	1740-1½ 501 (500-1½)		
C CIRCLING*	1740-1 455 (500-1)	1780-1 495 (500-1)	1860-1½ 575 (600-1½)	2040-2½ 755 (800-2½)

DELTA JUNCTION/FORT GREELY, ALASKA

64°00'N-145°43'W

ALLEN AAF (PABI)

Amdt 1 10AUG23

RNAV (GPS) RWY 19

AK, 20 FEB 2025 to 17 APR 2025

AK, 20 FEB 2025 to 17 APR 2025