

VOR/DME OME <b>115.0</b> Chan <b>97</b>	APP CRS <b>276°</b>	Rwy Idg <b>6009</b> TDZE <b>25</b> Apt Elev <b>41</b>
---	------------------------	---

# VOR RWY 28

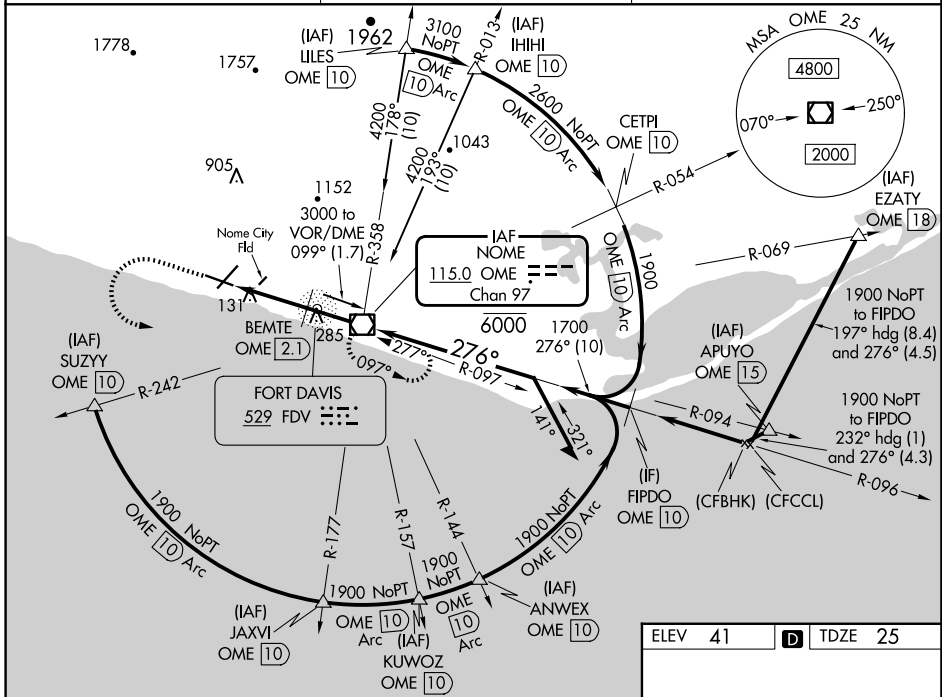
NOME (OME)(PAOM)

**⚠** For inop ALS, increase S-28 BEMTE fix minimums Cat A/B visibility to RVR 5000, increase Cat C/D visibility to 1 3/8 SM. Circling NA for Cats C and D north of Rwy 10-28. Circling Rwy 21 NA at night. Rwy 28 helicopter visibility reduction below RVR 4000 NA.

**MALSR** **AS**

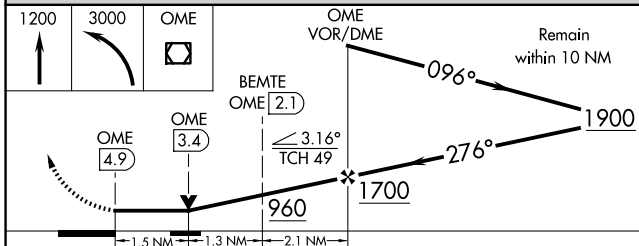
**MISSED APPROACH:** Climb to 1200 then climbing left turn to 3000 direct OME VOR/DME and hold, continue climb-in-hold to 3000.

AFIS <b>119.925</b>	ANCHORAGE CENTER <b>133.3 290.4</b>	NOME RADIO <b>123.6 (CTAF)</b> <b>0</b>
------------------------	--	--



AK, 20 FEB 2025 to 17 APR 2025

AK, 20 FEB 2025 to 17 APR 2025



ELEV 41	<b>D</b> TDZE 25
---------	------------------

**REIL Rws 3 and 10** **0**  
**HIRL Rwy 10-28** **0**  
**MIRL Rwy 3-21** **0**

FAF to MAP 4.9 NM					
Knots	60	90	120	150	180
Min:Sec	4:54	3:16	2:27	1:58	1:38

CATEGORY	A	B	C	D
S-28	960/40	935 (1000-3/4)	960-2	935 (1000-2)
<b>C</b> CIRCLING	960-1 1/4	919 (1000-1 1/4)	960-2 3/4 919 (1000-2 3/4)	960-3 919 (1000-3)
BEMTE FIX MINIMUMS				
S-28	540/40	515 (500-3/4)	540/55	515 (500-1)
<b>C</b> CIRCLING	540-1	499 (500-1)	540-1 1/2 499 (500-1 1/2)	700-2 659 (700-2)