

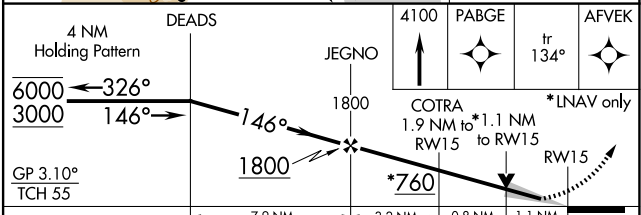
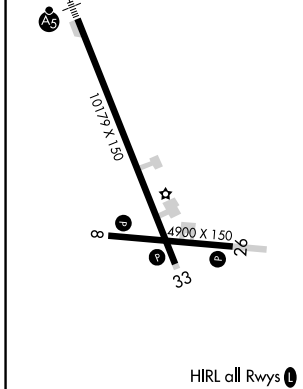
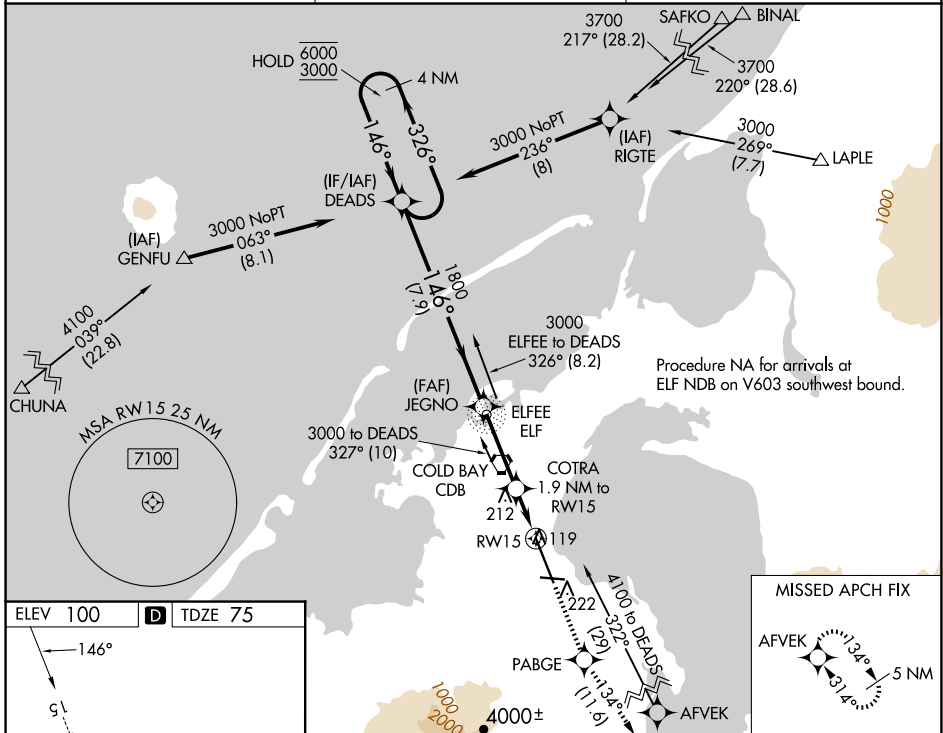
WAAS CH 45612 W15A	APP CRS 146°	Rwy Idg TDZE 75 Apt Elev 100	10179
--	------------------------	--	--------------

RNAV (GPS) RWY 15

COLD BAY (CDB) (PACD)

RNP APCH.	MALS R	MISSED APPROACH: Climb to 4100 direct PABGE and on track 134° to AFVEK and hold, continue climb-in-hold to 4100.
<p>⚠ For uncompensated Baro-VNAV systems, LNAV/VNAV NA below -10°C or above 54°C. Circling NA for Cat A southwest of Rwy 15-33 at night. Circling NA for Cats B/C/D southwest of Rwy 15-33. For inop ALS, increase LNAV/VNAV all Cats visibility to RVR 4000 and LNAV Cat C/D visibility to RVR 6000. #RVR 1800 authorized with use of FD or AP or HUD to DA.</p>		

ASOS 135.75	ANCHORAGE CENTER 118.5 278.3	COLD BAY RADIO 123.6 (CTAF) 0
-----------------------	--	---



CATEGORY	A	B	C	D
LPV DA#		275/24	200 (200-½)	
LNAV/VNAV DA		325/24	250 (300-½)	
LNAV MDA	480/24	405 (400-½)	480/40	405 (400-¾)
	540-1 440 (500-1)	560-1 460 (500-1)	560-1½ 460 (500-1½)	860-2½ 760 (800-2½)

AK, 20 FEB 2025 to 17 APR 2025

AK, 20 FEB 2025 to 17 APR 2025