

WAAS CH <b>42730</b> <b>W26A</b>	APP CRS <b>248°</b>	Rwy Idg TDZE Apt Elev	<b>4900</b> <b>100</b> <b>100</b>
--	------------------------	-----------------------------	---

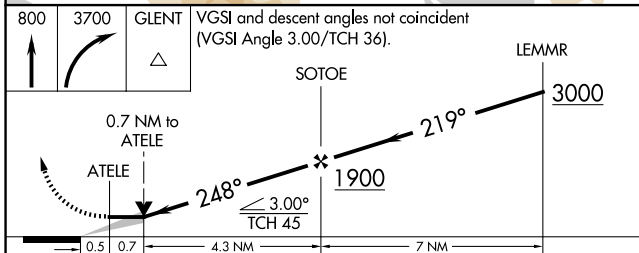
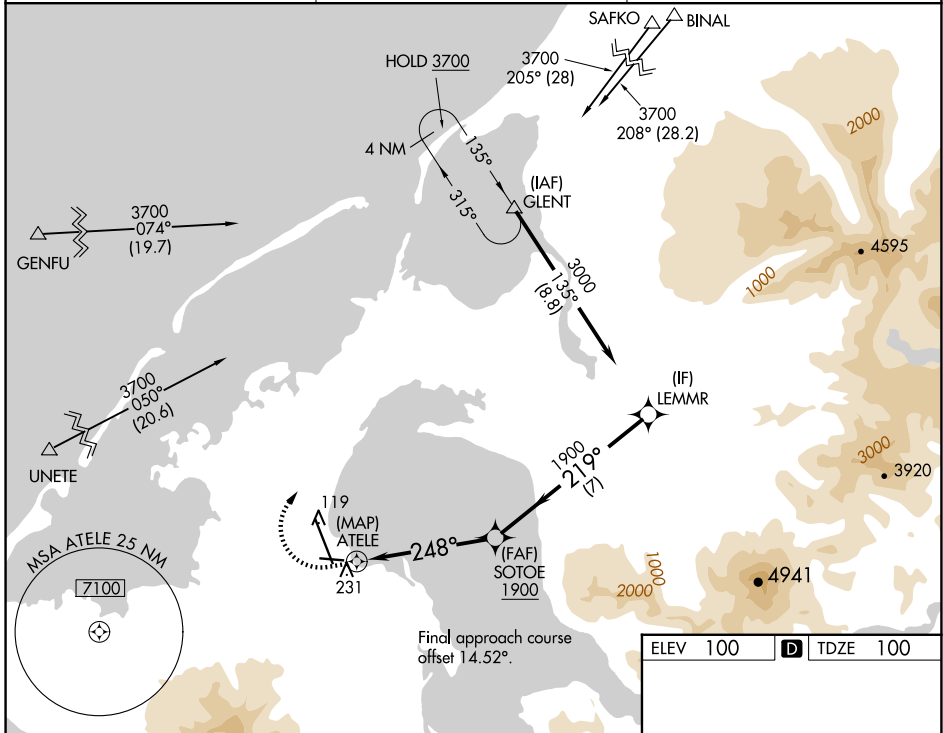
# RNAV (GPS) RWY 26

COLD BAY (CDB) (PACD)

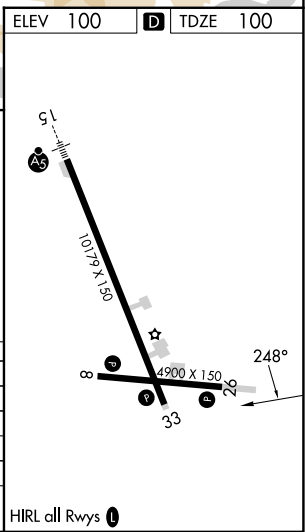
RNP APCH. MISSED APPROACH: Climb to 800 then climbing right turn to 3700 direct GLENT and hold, continue climb-in-hold to 3700. # Missed approach requires a minimum climb of 280 feet per NM to 1180.

**▲** Circling NA for Cat B, C, and D southwest of Rwy 15-33.

ASOS <b>135.75</b>	ANCHORAGE CENTER <b>118.5 278.3</b>	COLD BAY RADIO <b>123.6 (CTAF) 1</b>
-----------------------	--	---



CATEGORY	A	B	C	D
LP MDA #	500-1	400 (400-1)	500-1 1/8	400 (400-1 1/8)
LP MDA	660-1	560 (600-1)	660-1 5/8	560 (600-1 5/8)
RNAV MDA #	500-1	400 (400-1)	500-1 1/8	400 (400-1 1/8)
RNAV MDA	700-1	600 (600-1)	700-1 3/4	600 (600-1 3/4)
<b>C</b> CIRCLING	700-1	600 (600-1)	700-1 3/4 600 (600-1 3/4)	860-2 1/2 760 (800-2 1/2)



AK, 20 FEB 2025 to 17 APR 2025

AK, 20 FEB 2025 to 17 APR 2025