

WAAS CH <b>49106</b> <b>W33A</b>	APP CRS <b>326°</b>	Rwy Idg <b>10179</b> TDZE <b>93</b> Apt Elev <b>100</b>
--	------------------------	---

# RNAV (GPS) RWY 33

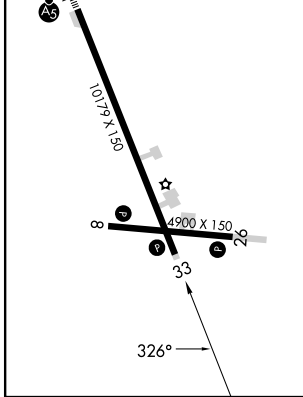
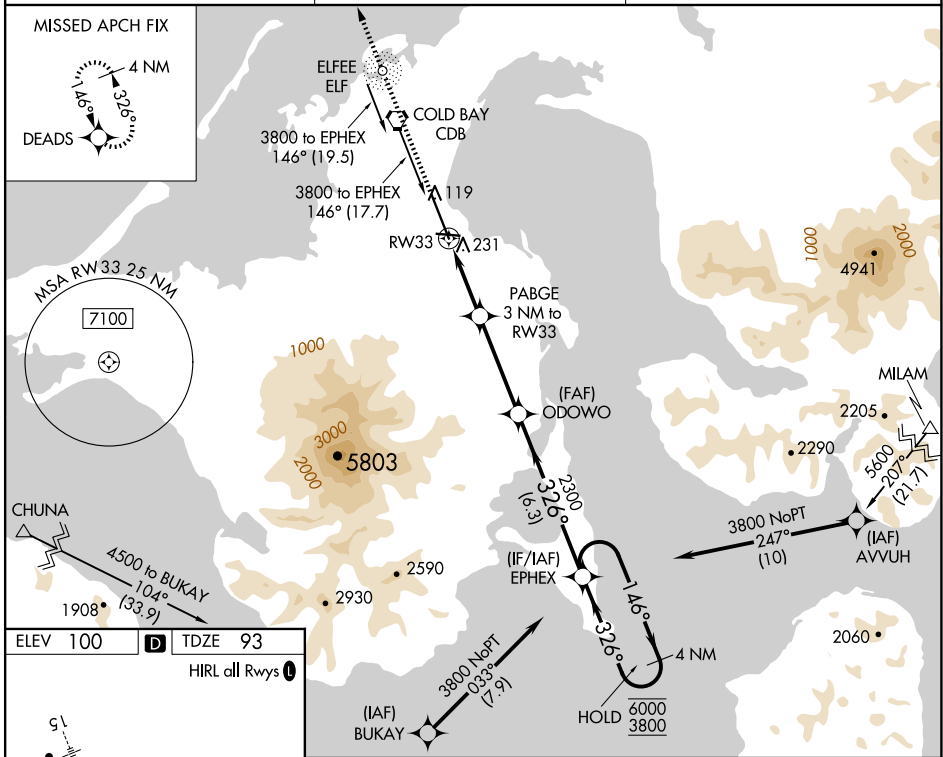
COLD BAY (CDB) (PACD)

RNP APCH.

▼ For uncompensated Baro-VNAV systems, LNAV/VNAV NA below -10°C or above 54°C. Circling NA for Cat A southwest of Rwy 15-33 at night. Circling NA for Cat B/C/D southwest of Rwy 15-33.

MISSED APPROACH: Climb to 3000 direct DEADS and hold.

ASOS <b>135.75</b>	ANCHORAGE CENTER <b>118.5 278.3</b>	COLD BAY RADIO <b>123.6 (CTAF) 0</b>
-----------------------	--	---



3000 DEADS	VGSI and RNAV glidepath not coincident (VGSI Angle 3.00/TCH 36).	EPHEX 4 NM Holding Pattern
*LNAV only	PABGE 3 NM to RW33	ODOWO 2300
*1.2 NM to RW33	RW33	1100*
1.2 NM	1.8 NM	3.8 NM
6000	3800	GP 3.00° TCH 55

CATEGORY	A	B	C	D
LPV DA		293-¾	200 (200-¾)	
LNAV/VNAV DA		392-7/8	299 (300-7/8)	
LNAV MDA	500-1	407 (400-1)	500-1½	407 (400-1½)
<b>C</b> CIRCLING	540-1 440 (500-1)	560-1 460 (500-1)	560-1½ 460 (500-1½)	860-2½ 760 (800-2½)

AK, 20 FEB 2025 to 17 APR 2025

AK, 20 FEB 2025 to 17 APR 2025