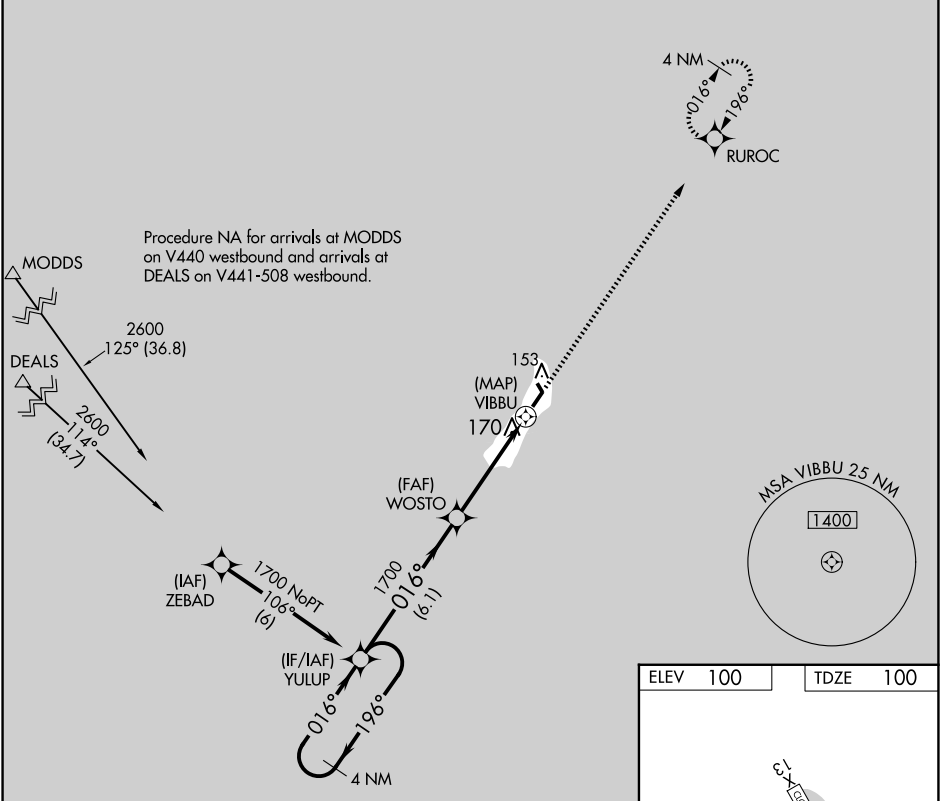


WAAS CH <b>86427</b> <b>W02A</b>	APP CRS <b>016°</b>	Rwy Idg TDZE Apt Elev	<b>3158</b> <b>100</b> <b>100</b>
--	------------------------	-----------------------------	---

**RNAV (GPS) RWY 2**  
MIDDLETON ISLAND (MDO) (P.A.M.D)

**Procedure NA at night. Helicopter visibility reduction below 1 SM NA.** MISSED APPROACH: Climb to 1700 direct RUROC and hold.

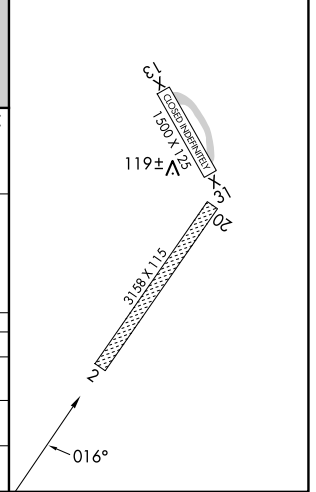
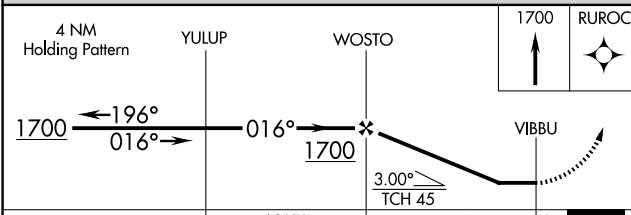
AWOS-3P <b>135.725</b>	ANCHORAGE CENTER <b>133.6 269.4</b>	JUNEAU RADIO <b>122.05</b>	CTAF <b>122.9</b>
---------------------------	--	-------------------------------	----------------------



AK, 20 FEB 2025 to 17 APR 2025

AK, 20 FEB 2025 to 17 APR 2025

ELEV 100	TDZE 100
----------	----------



CATEGORY	A	B	C	D
LP MDA	560-1	460 (500-1)	560-1 3/8 460 (500-1 3/8)	NA
LNVA MDA	580-1	480 (500-1)	580-1 3/8 480 (500-1 3/8)	NA
CIRCLING	600-1	500 (500-1)	600-1 1/2 500 (500-1 1/2)	NA