

WAAS CH 40003 W20A	APP CRS 198°	Rwy Idg 6011
		TDZE 1354
		Apt Elev 1359

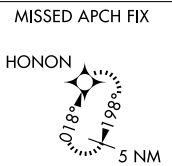
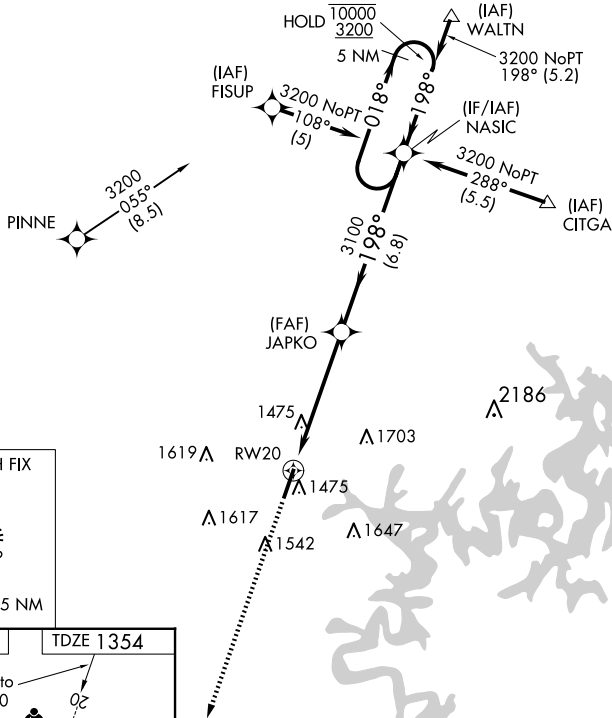
RNAV (GPS) RWY 20

ROGERS EXEC - CARTER FLD (R.O.G)

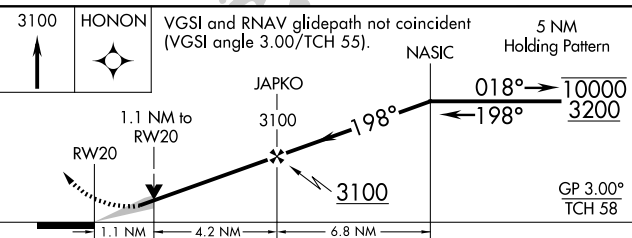
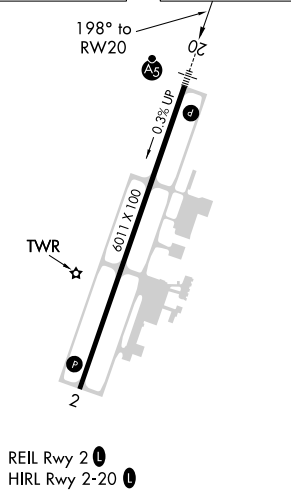
RNP APCH-GPS.		MALSR		MISSED APPROACH: Climb to 3100 direct HONON and hold.	
<p>For uncompensated Baro-VNAV systems, LNAV/VNAV NA below -17°C or above 54°C.</p>					
AWOS-3PT 134.375	RAZORBACK APP CON* 126.6 305.2	ROGERS TOWER* 119.375 (CTAF)	GND CON 118.0	CLNC DEL 121.75	CLNC DEL 121.75 <small>(When twr closed)</small>

SC-1, 20 MAR 2025 to 17 APR 2025

SC-1, 20 MAR 2025 to 17 APR 2025



ELEV 1359	TDZE 1354
-----------	-----------



CATEGORY	A	B	C	D
LPV DA		1604-½	250 (300-½)	
LNAV/VNAV DA		1720-⅝	366 (400-⅝)	
LNAV MDA	1740-½	386 (400-½)	1740-⅝	386 (400-⅝)
CIRCLING	1840-1	481 (500-1)	2020-1¾ 661 (700-1¾)	2020-2 661 (700-2)