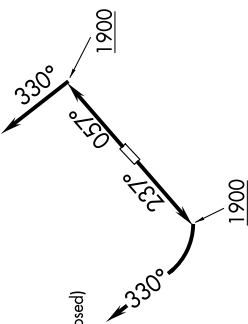


GTLKE FOUR DEPARTURE (RNAV)

EC-2, 20 MAR 2025 to 17 APR 2025

D-ATIS 119.95
 CLNC DEL 121.85 (when tower closed)
 GND CON 121.85
 COUNTY TOWER * 118.5 (CTAF)
 CLEVELAND DEP CON 125.35 346.325



**TOP ALTITUDE:
ASSIGNED BY ATC**

TAKEOFF MINIMUMS:

Rwys 6, 24: Standard with a minimum climb of 500' per NM to 1400.

DEPARTURE ROUTE DESCRIPTION

TAKEOFF RUNWAY 6: Climb on heading 057° to 1900, then on heading 330° or as assigned by ATC for RADAR vectors to cross AYYLE at or above 9000, thence....

TAKEOFF RUNWAY 24: Climb on heading 237° to 1900, then right turn heading 330° or as assigned by ATC for RADAR vectors to cross AYYLE at or above 9000, thence....

....on track 276° to cross BRNN at or below 14000, then on track 285° to GTLKE then on (transition). Maintain ATC assigned altitude, expect filed altitude 10 minutes after departure.

- ALPHE TRANSITION (GTLKE4.ALPHE)
- BAGEL TRANSITION (GTLKE4.BAGEL)
- DAIFE TRANSITION (GTLKE4.DAIFE)
- YABRO TRANSITION (GTLKE4.YABRO)

NOTE: RADAR required.

NOTE: RNAV 1.

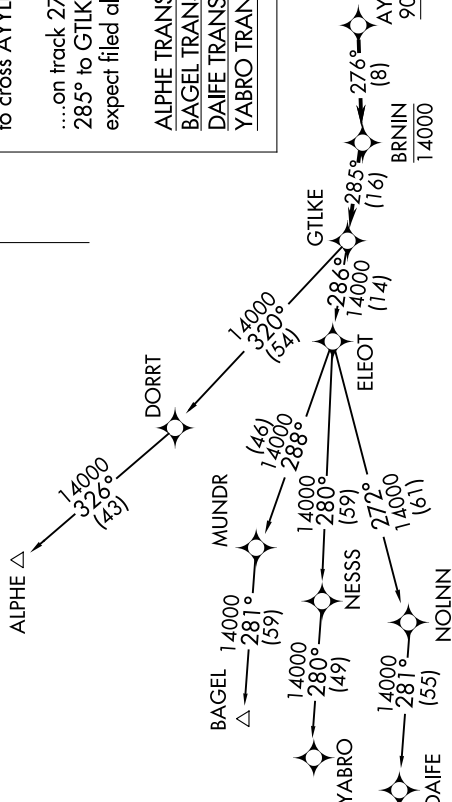
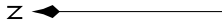
NOTE: DME/DME/IRU or GPS required.

NOTE: BAGEL TRANSITION: For aircraft landing

NOTE: MDW only, or as assigned by ATC.

NOTE: DAIFE TRANSITION: For aircraft landing

NOTE: ORD only, or as assigned by ATC.



NOTE: Chart not to scale.

GTLKE FOUR DEPARTURE (RNAV)

(GTLKE4.GTLKE) 26MAR20

CLEVELAND, OHIO

CUYAHOGA COUNTY (CGF)

EC-2, 20 MAR 2025 to 17 APR 2025