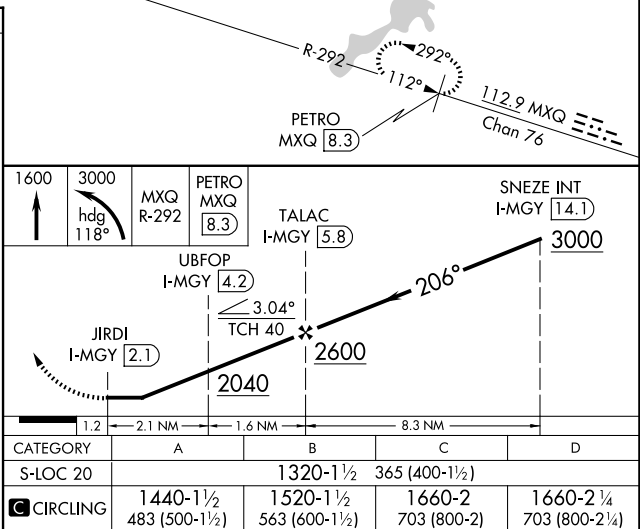
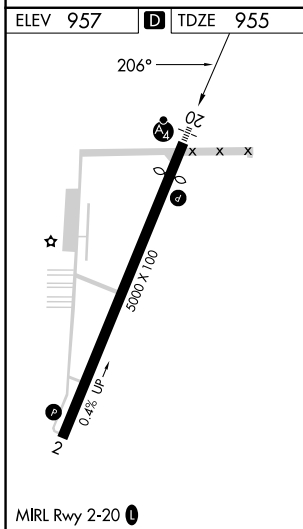
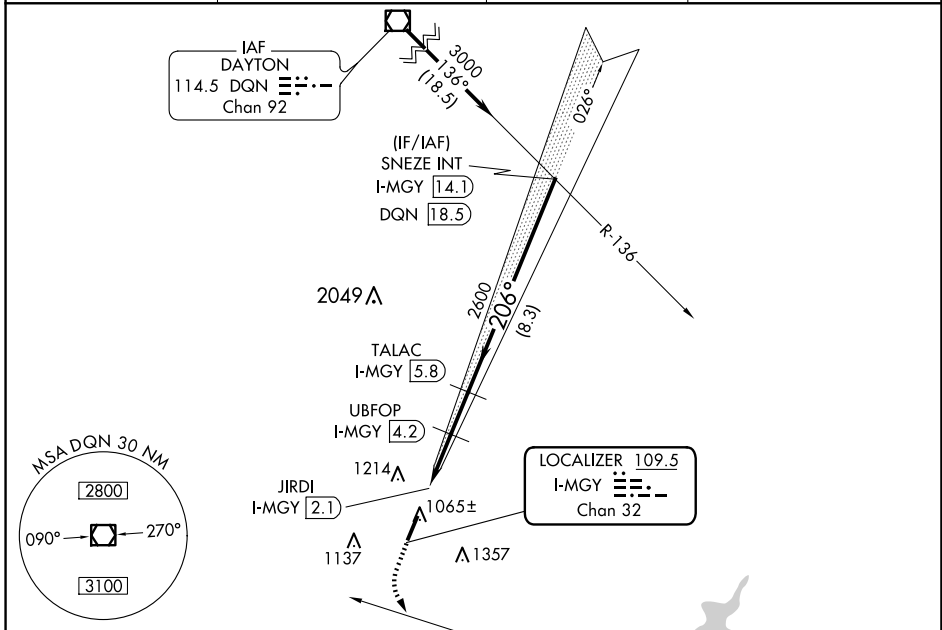


LOC/DME I-MGY 109.5 Chan 32	APP CRS 206°	Rwy ldg 4410 TDZE 955 Apt Elev 957
-------------------------------------------------	------------------------	---------------------------------------------------------------

LOC RWY 20
DAYTON/WRIGHT BROTHERS (MGY)

DME required.		MALS	MISSED APPROACH: Climb to 1600 then climbing left turn to 3000 on heading 118° and MXQ VOR/DME R-292 to PETRO MXQ 8.3 DME and hold.
<p>▼ Rwy 20 helicopter visibility reduction below 3/4 SM NA. ▲ NA Inop table does not apply.</p>			

ASOS 118.375	COLUMBUS APP CON 118.85 269.275	CLNC DEL 119.4	UNICOM 122.8 (CTAF) 0
------------------------	-------------------------------------------	--------------------------	---------------------------------



EC-2, 20 MAR 2025 to 17 APR 2025

EC-2, 20 MAR 2025 to 17 APR 2025