

APP CRS 289°	Rwy ldg TDZE Apt Elev	3975 118 118
------------------------	-----------------------------	---

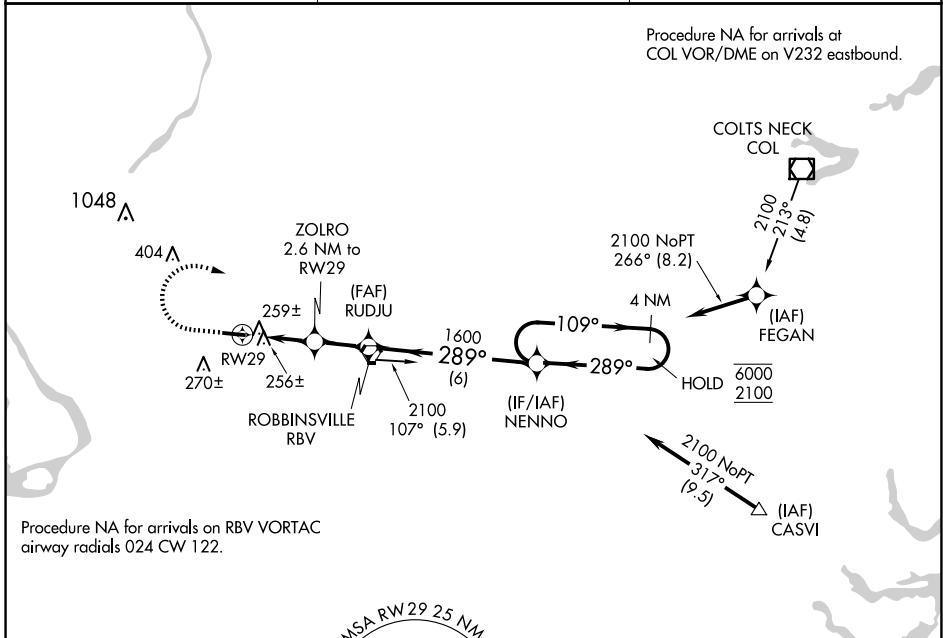
RNAV (GPS) RWY 29

TRENTON-ROBBINSVILLE (N87)

RNP APCH. Procedure NA at night. Rwy 29 helicopter visibility reduction below 1 SM NA. Use Wrightstown altimeter setting.

MISSED APPROACH: Climb to 1000, then climbing right turn to 2100 direct NENNO and hold.

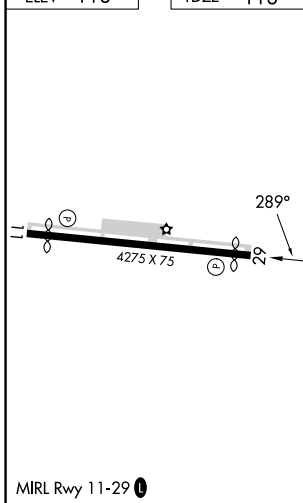
MC GUIRE APP CON 126.475 363.8	UNICOM 123.0 (CTAF)	123.3 0
--	-------------------------------	----------------



NE-2, 20 MAR 2025 to 17 APR 2025

NE-2, 20 MAR 2025 to 17 APR 2025

ELEV 118	TDZE 118
----------	----------



	1000	2100	NENNO	Visual Segment - Obstacles.	
					4 NM Holding Pattern
				RUDJU	NENNO
				ZOLRO 2.6 NM to RWY 29	109° → 6000
				RWY 29	← 289° 2100
				980	1600
				2.6 NM	1.9 NM
CATEGORY	A	B	C	D	
LNAV MDA	540-1	422 (500-1)	540-1½	422 (500-1½)	
CIRCLING	680-1	562 (600-1)	680-1½	760-2	642 (700-2)
			562 (600-1½)		