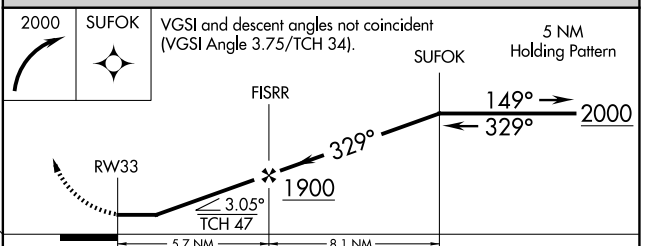
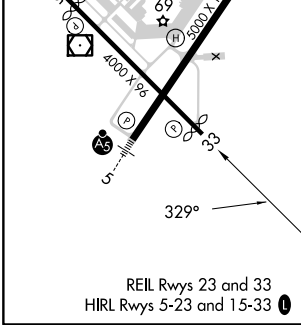
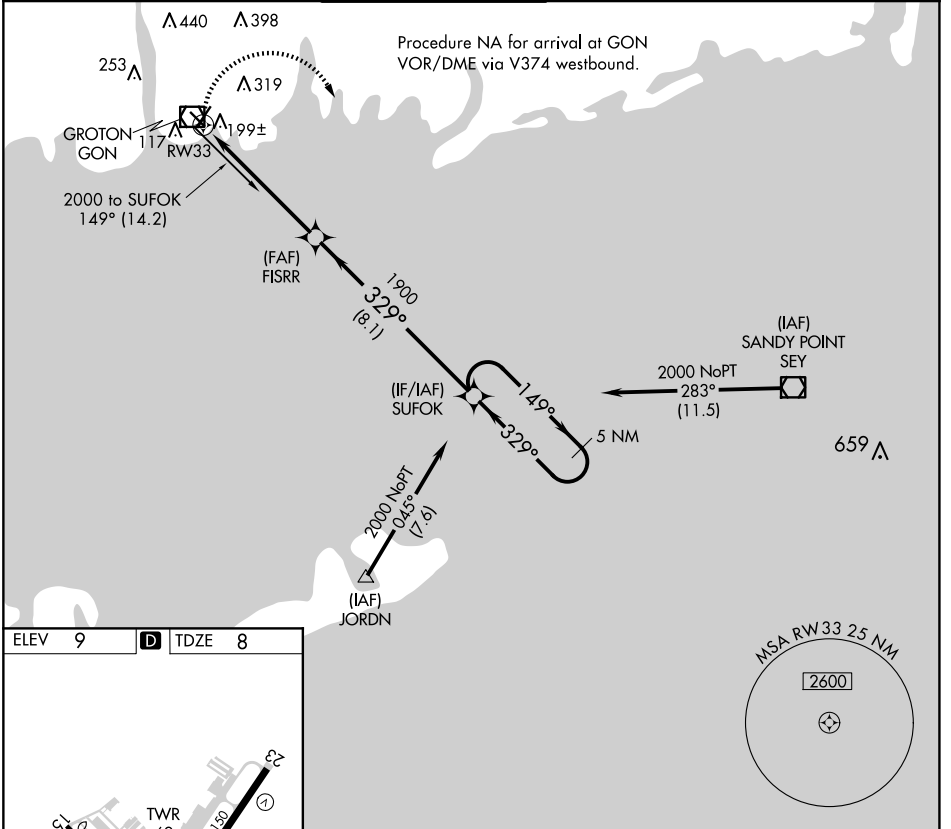


APP CRS	Rwy Idg	<b>3666</b>
<b>329°</b>	TDZE	<b>8</b>
	Apt Elev	<b>9</b>

# RNAV (GPS) RWY 33

GROTON-NEW LONDON (GON)

RNP APCH.		MISSED APPROACH: Climbing right turn to 2000 direct SUFOK and hold.			
▼ Rwy 33 helicopter visibility reduction below ¼ SM NA.					
ATIS	PROVIDENCE APP CON *	GROTON TOWER *	GND CON	CLNC DEL	CLNC DEL
<b>127.0</b>	<b>125.75 319.2</b>	<b>125.6 (CTAF) 236.775</b>	<b>121.65 236.775</b>	<b>119.85</b> <small>(when twr closed)</small>	<b>121.65</b>



CATEGORY	A	B	C	D
LNAV MDA	460-1	452 (500-1)	460-1¼ 452 (500-1¼)	460-1½ 452 (500-1½)

NE-1, 20 MAR 2025 to 17 APR 2025

NE-1, 20 MAR 2025 to 17 APR 2025