

WAAS CH <b>45521</b> <b>W05A</b>	APP CRS <b>048°</b>	Rwy Idg TDZE Apt Elev	<b>5000</b> <b>8</b> <b>9</b>
--	------------------------	-----------------------------	-------------------------------------

# RNAV (GPS) RWY 5

## GROTON-NEW LONDON (GON)

RNP APCH - GPS.

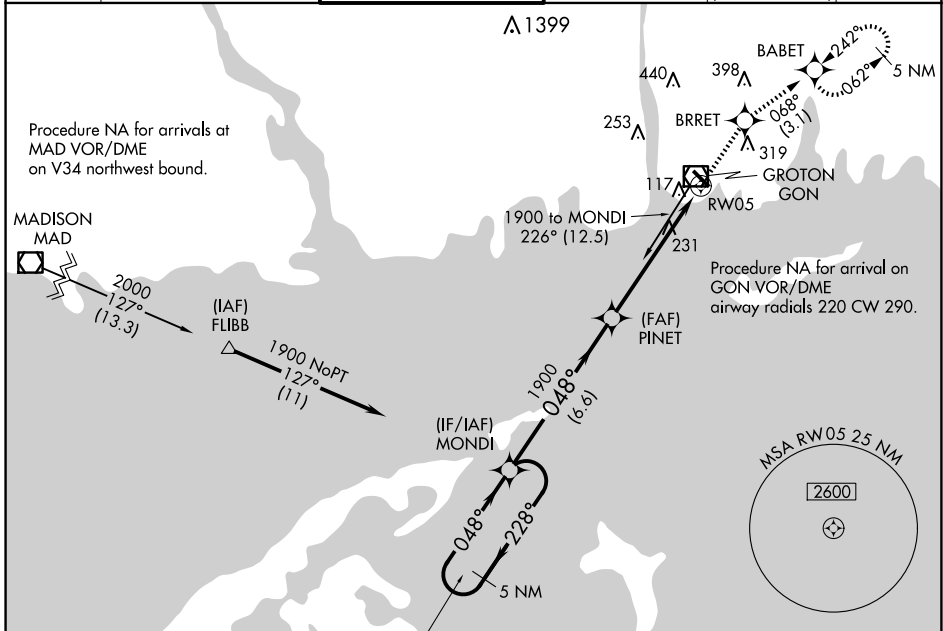
**⚠** Circling Rwy 15 NA at night. For uncompensated Baro-VNAV systems, procedure NA below -15°C or above 54°C. For inop ALS, increase LPV all Cats visibility to RVR 4500 and LNAV Cats visibility C/D to 1%.  
**⚠**

MALSR



MISSED APPROACH: Climb to 2100 direct BRRET and on track 068° to BABET and hold, continue climb-in-hold to 2100.

ATIS <b>127.0</b>	PROVIDENCE APP CON ★ <b>125.75 319.2</b>	GROTON TOWER ★ <b>125.6 (CTAF) 0 236.775</b>	GND CON <b>121.65 236.775</b>	CLNC DEL <b>119.85</b> (when twr closed)	CLNC DEL <b>121.65</b>
----------------------	---	---	----------------------------------	--	---------------------------



NE-1, 20 MAR 2025 to 17 APR 2025

NE-1, 20 MAR 2025 to 17 APR 2025

ELEV 9	<b>D</b> TDZE 8
--------	-----------------

5 NM Holding Pattern	MONDI	PINET	BRRET	BABET
	6000 1900	1900	↑	Ir 068°
GP 3.00° TCH 42	228°	048°	1.4 NM to RW05	
	6.6 NM	4.3 NM	1.4 NM	
CATEGORY	A	B	C	D
LPV DA		292/24	284 (300-½)	
LNAV/VNAV DA		533/55	525 (600-1)	
LNAV MDA	500/24	492 (500-½)	500/50	492 (500-1)
CIRCLING	580-1 571 (600-1)	620-1 611 (700-1)	700-2 691 (700-2)	840-2¾ 831 (900-2¾)

