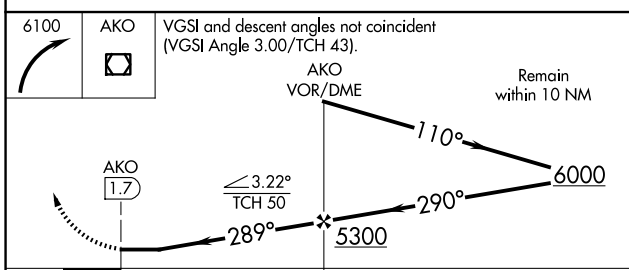
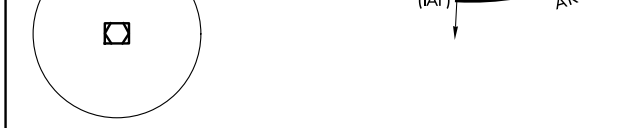
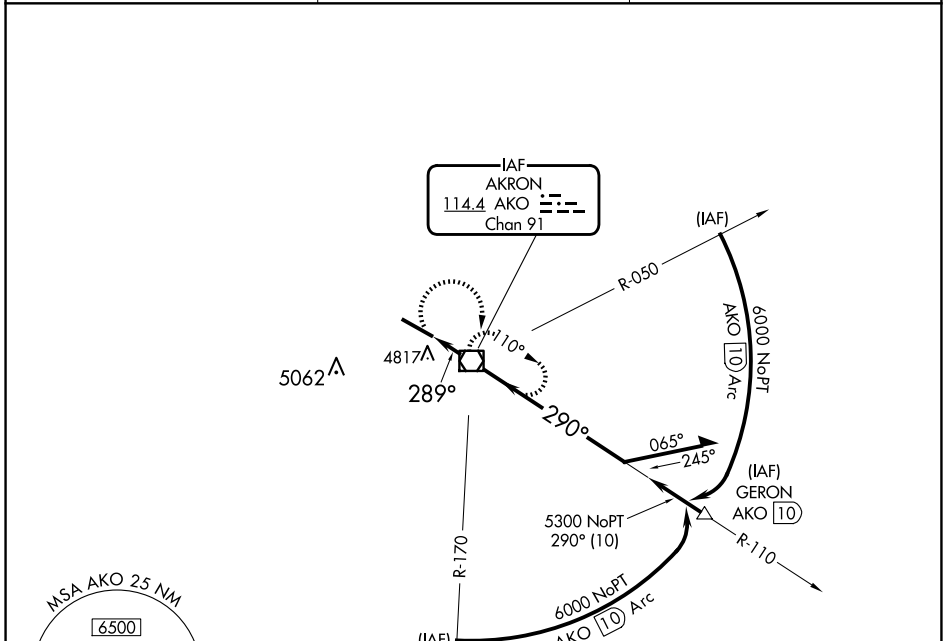


VOR/DME AKO 114.4 Chan 91	APP CRS 289°	Rwy Idg TDZE Apt Elev	7001 4683 4716
--	------------------------	-----------------------------	---

VOR RWY 29
COLORADO PLAINS RGNL (AKO)

⚠ Circling NA for Cats C and D southwest of Rwy 11-29. MISSED APPROACH: Climbing right turn to 6100 direct AKO VOR/DME and hold.

ASOS 135.475	DENVER CENTER 133.95 317.55	UNICOM 122.8 (CTAF) Ⓛ
------------------------	---------------------------------------	--



ELEV 4716	TDZE 4683
-----------	-----------

Diagram of Rwy 11-29 showing:
 - 7001 x 100
 - 4796A, 4799±
 - 289°
 - 0.6% UP

MIRL Rwy 11-29 Ⓛ
REIL Rws 11 and 29 Ⓛ
FAF to MAP 1.7 NM
Knots: 60 90 120 150 180
Min:Sec: 1:42 1:08 0:51 0:41 0:34

CATEGORY	A	B	C	D
S-29	5120-1 437 (500-1)		5120-1¼ 437 (500-1¼)	
CIRCLING	5140-1 424 (500-1)	5260-1 544 (600-1)	5300-1½ 584 (600-1½)	5300-2 584 (600-2)

SW-1, 20 MAR 2025 to 17 APR 2025

SW-1, 20 MAR 2025 to 17 APR 2025