

WAAS CH <b>86926</b> <b>W33A</b>	APP CRS <b>334°</b>	Rwy Idg TDZE Apt Elev	<b>5002</b> <b>349</b> <b>357</b>
--	------------------------	-----------------------------	---

# RNAV (GPS) RWY 33

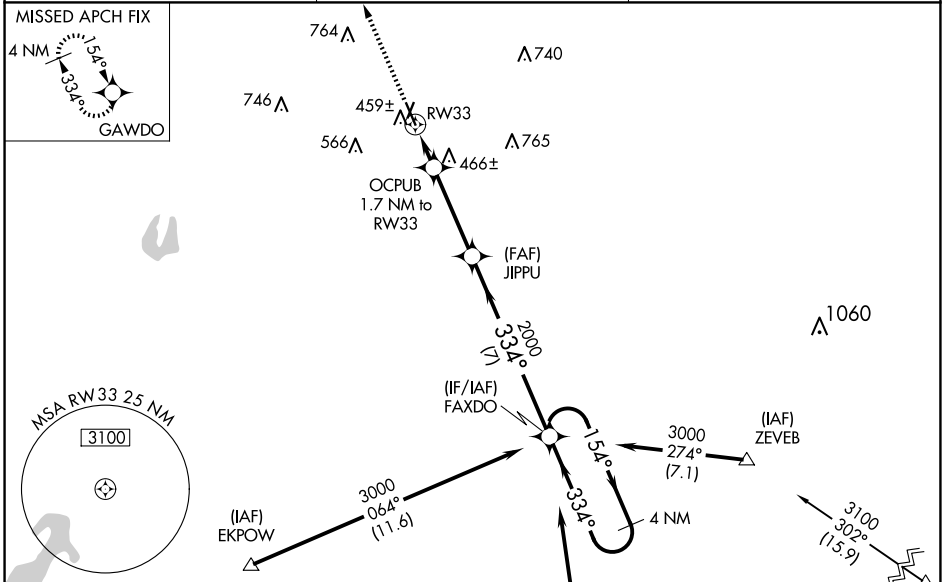
HARRISON COUNTY (ASL)

RNP APCH.

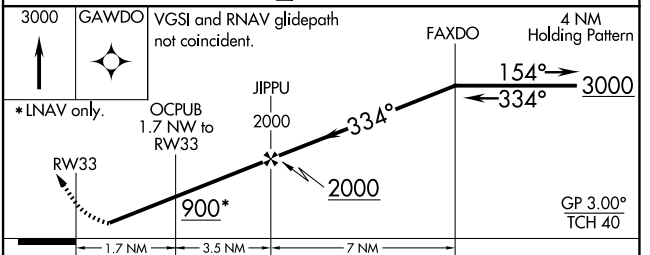
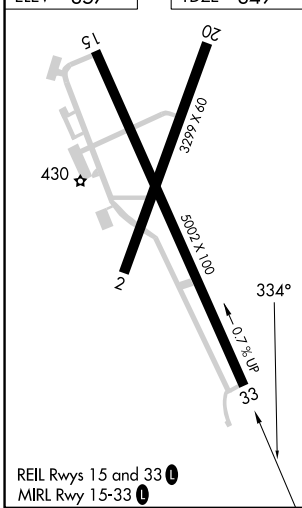
Baro-VNAV NA when using Longview altimeter setting. For uncompensated Baro-VNAV systems, LNAV/VNAV NA below -5°C (23°F) or above 40°C (104°F). Rwy 33 helicopter visibility reduction below 3/4 SM NA. When local altimeter setting not received, use Longview altimeter setting and increase all DA 52 feet and all MDA 60 feet; increase LPV all Cats visibility 1/8 mile, LNAV/VNAV all Cats and LNAV Cat C visibility 1/4 mile.

MISSED APPROACH:  
Climb to 3000 direct GAWDO and hold.

AWOS-3PT <b>118.675</b>	SHREVEPORT APP CON <b>119.9 335.55</b>	UNICOM <b>122.8 (CTAF)</b>
----------------------------	---	-------------------------------



ELEV 357	TDZE 349
----------	----------



CATEGORY	A	B	C	D
LPV DA	635-1 286 (300-1)			NA
LNAV/VNAV DA	658-1 309 (300-1)			NA
LNAV MDA	720-1 371 (400-1)	720-1 371 (400-1 1/8)		NA

SC-2, 20 MAR 2025 to 17 APR 2025

SC-2, 20 MAR 2025 to 17 APR 2025