

VORTAC GGG 112.9 Chan 76	APP CRS 068°	Rwy Idg TDZE Apt Elev	N/A N/A 357
--	------------------------	-----------------------------	--

VOR/DME-A
HARRISON COUNTY (ASL)

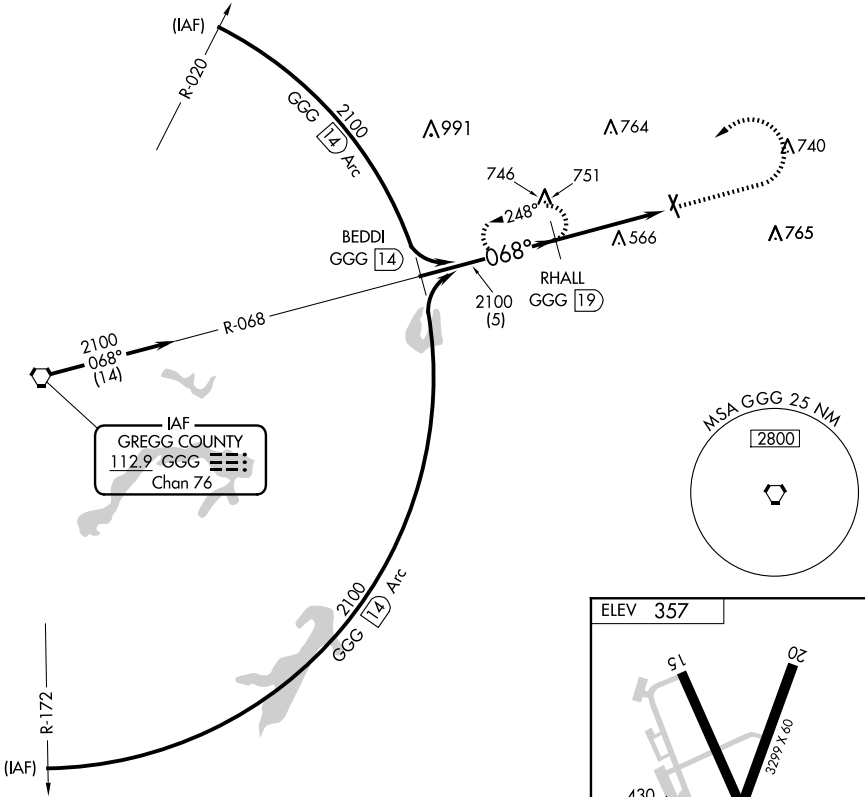
⚠ When local altimeter setting not received, use Longview altimeter setting and increase all MDA 60 feet; increase Cat B visibility to 1½. Night Landing; Rwy 2, 15, 20 NA. Helicopter visibility reduction below 1 SM NA.

⚠ NA MISSED APPROACH: Climb to 2100 then left turn via GGG R-068 to RHALL/GGG 19 DME and hold.

AWOS-3PT
118.675

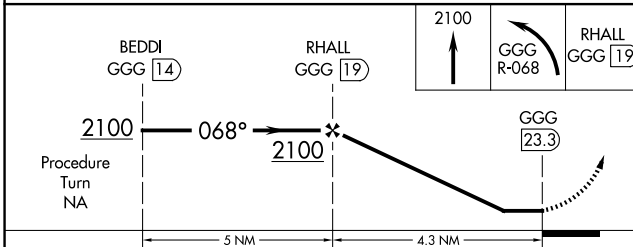
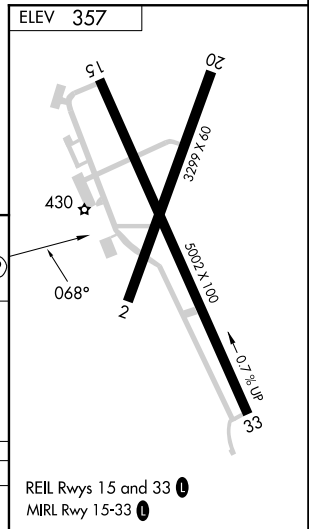
SHREVEPORT APP CON
119.9 335.55

UNICOM
122.8 (CTAF) **📻**



SC-2, 20 MAR 2025 to 17 APR 2025

SC-2, 20 MAR 2025 to 17 APR 2025



CATEGORY	A	B	C	D
CIRCLING	1300-1¼	943 (1000-1¼)		NA

REIL Rwy 15 and 33 **📻**
MIRL Rwy 15-33 **📻**