

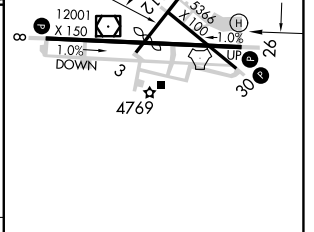
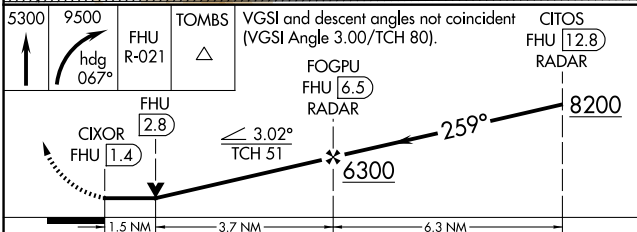
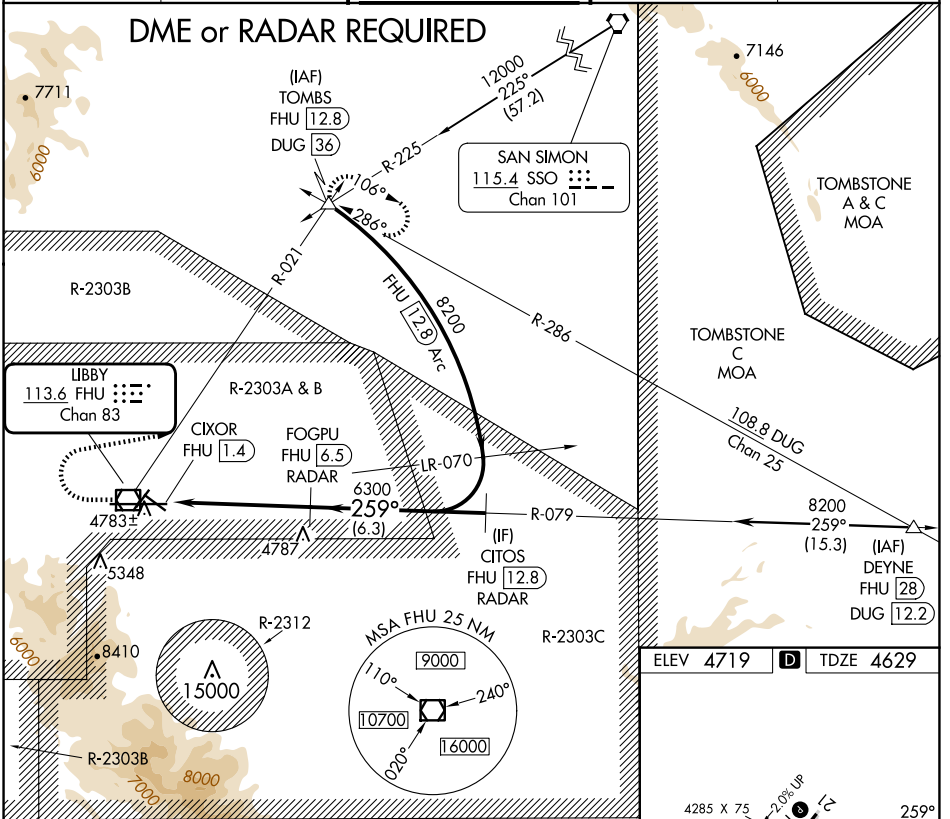
VOR/DME FHU 113.6 Chan 83	APP CRS 259°	Rwy Idg 12001 TDZE 4629 Apt Elev 4719
---	------------------------	--

VOR RWY 26

SIERRA VISTA MUNI-LIBBY AAF (FHU)

	Circling NA south of Rws 8 and 30. DME or RADAR required.	MISSED APPROACH: Climb to 5300 then climbing right turn to 9500 on heading 067° and FHU R-021 to TOMBS INT/ DUG 36 DME and hold, continue climb-in-hold to 9500.		
		ATIS 134.75 263.025	LIBBY AAF GCA* 127.05 254.25	LIBBY TOWER* 124.95 (CTAF) 284.75

ATIS 134.75 263.025	LIBBY AAF GCA* 127.05 254.25	LIBBY TOWER* 124.95 (CTAF) 284.75	GND CON 121.7 268.7	UNICOM 122.95
-------------------------------	--	---	-------------------------------	-------------------------



5300	9500	FHU R-021	TOMBS	VGS1 and descent angles not coincident (VGS1 Angle 3.00/TCH 80).		CITOS FHU 12.8
hdg 067°		FHU 2.8	FOGPU RADAR 6.5	3.02° TCH 51		RADAR
1.5 NM		3.7 NM		6.3 NM		
CATEGORY	A	B	C	D		
S-26	5140-1	511 (500-1)	5140-1½	511 (500-1½)		
CIRCLING	5160-1 441 (500-1)	5180-1 461 (500-1)	5180-1⅝ 461 (500-1⅝)	5280-2 561 (600-2)		

HIRL Rwy 8-26	MIRL Rws 3-21 and 12-30				
FAF to MAP 5.1 NM					
Knots	60	90	120	150	180
Min:Sec	5:06	3:24	2:33	2:02	1:42

SW-4, 20 MAR 2025 to 17 APR 2025

SW-4, 20 MAR 2025 to 17 APR 2025