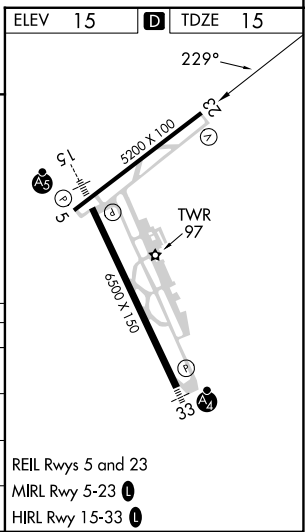
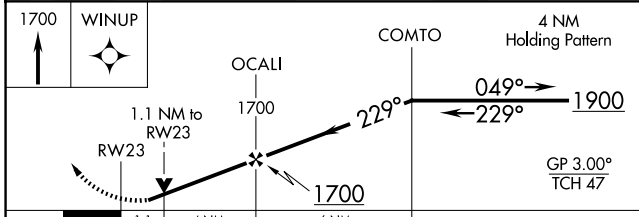
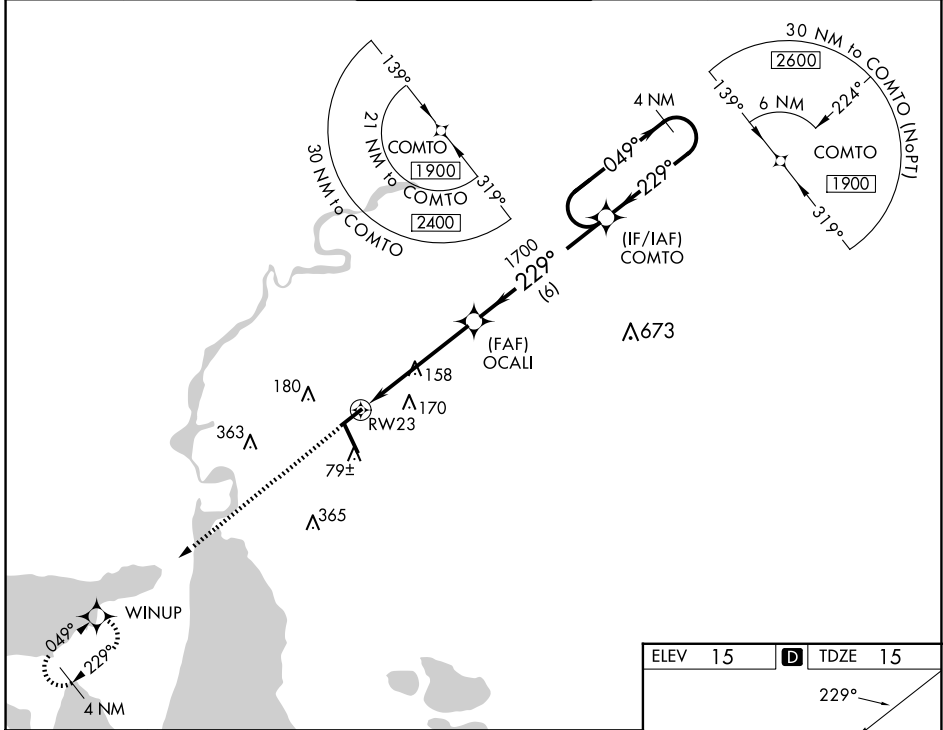


WAAS CH <b>61041</b> <b>W23A</b>	APP CRS <b>229°</b>	Rwy Idg <b>5200</b> TDZE <b>15</b> Apt Elev <b>15</b>
--	------------------------	---

# RNAV (GPS) RWY 23

LAKE CHARLES RGNL (LCH)

RNP APCH - GPS.		MISSED APPROACH: Climb to 1700 direct WINUP and hold.	
⚠ For uncompensated Baro-VNAV systems, LNAV/VNAV NA below -2°C or above 54°C. ASR Rwy 23 helicopter visibility reduction below 3/4 SM NA.			
ATIS <b>118.75</b>	LAKE CHARLES APP CON * <b>119.35 353.75</b>	LAKE CHARLES TOWER * <b>120.7 (CTAF) 257.8</b>	GND CON <b>121.8</b>
		CLNC DEL <b>126.25</b>	UNICOM <b>122.95</b>



CATEGORY	A	B	C	D
LPV DA	265-3/4		250 (300-3/4)	
LNAV/VNAV DA	301-7/8		286 (300-7/8)	
LNAV MDA	420-1 405 (500-1)		420-1 1/8 405 (500-1 1/8)	
CIRCLING	440-1	480-1	580-1 1/2	680-2
	425 (500-1)	465 (500-1)	565 (600-1 1/2)	665 (700-2)

REIL Rwy 5 and 23  
MIRL Rwy 5-23  
HIRL Rwy 15-33

SC-4, 20 MAR 2025 to 17 APR 2025

SC-4, 20 MAR 2025 to 17 APR 2025