

WAAS CH <b>40329</b> <b>W30A</b>	APP CRS <b>300°</b>	Rwy Idg TDZE Apt Elev	<b>5199</b> <b>656</b> <b>656</b>
--	------------------------	-----------------------------	---

# RNAV (GPS) RWY 30

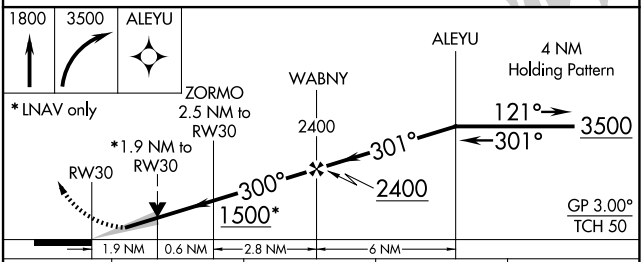
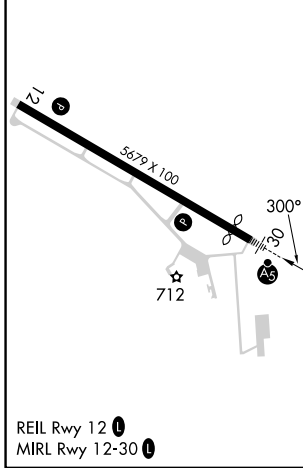
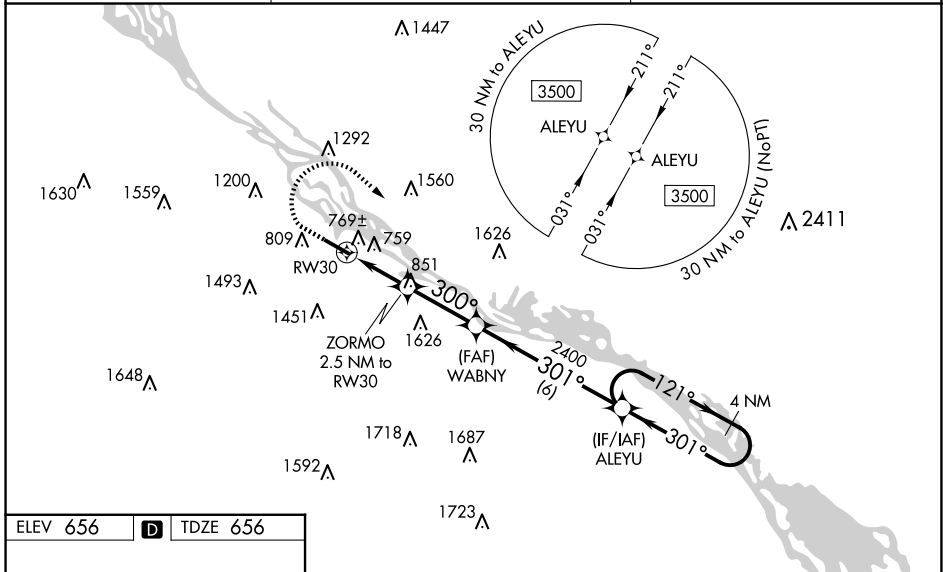
WINONA MUNI/MAX CONRAD FLD (O<sub>N</sub>A)

**⚠** For uncompensated Baro-VNAV systems, LNAV/VNAV NA below -16°C (4°F) or above 54°C (130°F). DME/DME RNP-0.3 NA.  
**⚠** When local altimeter setting not received, use La Crosse altimeter setting and increase all LPV DA to 1064 feet and visibility 1/8 mile all Cats, all LNAV/VNAV DA to 1193 and visibility 1/8 mile all Cats, and all MDA 60 feet, increase LNAV Cat C/D and Circling Cat B visibility 1/4 mile. For inop ALS when using La Crosse altimeter setting, increase LPV all Cats visibility to 1 1/8 mile. For inop ALS when using La Crosse altimeter setting, increase LPV all Cats visibility to 1 3/8 mile, and LNAV Cats C/D visibility to 2 mile. Baro-VNAV and VDP NA when using La Crosse altimeter setting.



**MISSED APPROACH:**  
 Climb to 1800 then climbing right turn to 3500 direct ALEYU and hold.

AWOS-3 <b>118.075</b>	MINNEAPOLIS CENTER <b>128.6 363.0</b>	UNICOM <b>122.8 (CTAF) 0</b>
--------------------------	--	---------------------------------



CATEGORY	A	B	C	D
LPV DA	1011-3/4	355 (400-3/4)		
LNAV/VNAV DA	1140-1/8	484 (500-1/8)		
LNAV MDA	1280-1/2	624 (700-1/2)	1280-1 3/8	624 (700-1 3/8)
<b>C</b> CIRCLING	1560-1/4 904 (1000-1/4)	1600-1/4 944 (1000-1/4)	1780-3 1124 (1200-3)	1980-3 1324 (1400-3)

# RNAV (GPS) RWY 30

NC-1, 20 MAR 2025 to 17 APR 2025

NC-1, 20 MAR 2025 to 17 APR 2025