

APP CRS	Rwy Idg	<b>5819</b>
<b>229°</b>	TDZE	<b>296</b>
	Apt Elev	<b>306</b>

# RNAV (GPS) Y RWY 23

FREDERICK MUNI (FDK)

RNP APCH.

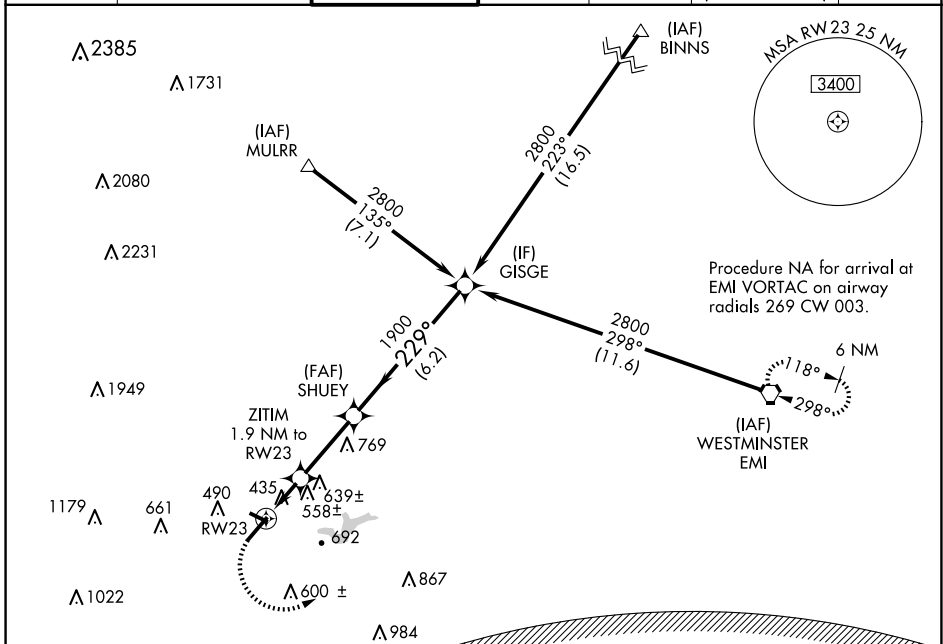
**▼** Inop table does not apply to Cat C. Rwy 23 helicopter visibility reduction below 3/4 SM NA. Circling Rwy 30 NA at night.

ODALS



**MISSED APPROACH:** Climbing left turn to 3000 direct EMI VORTAC and hold.

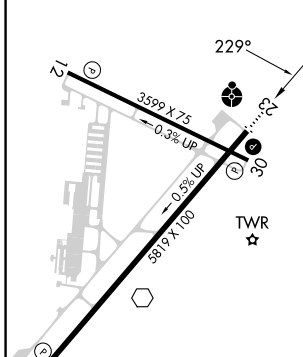
ATIS <b>124.875</b>	POTOMAC APP CON <b>126.1 338.25</b>	FREDERICK TOWER ★ <b>132.4 (CTAF) 0</b>	GND CON <b>127.425</b>	CLNC DEL <b>127.425</b>	CLNC DEL <b>126.9</b> (When twr closed)	UNICOM <b>122.95</b>
------------------------	--	--	---------------------------	----------------------------	---	-------------------------



NE-3, 20 MAR 2025 to 17 APR 2025

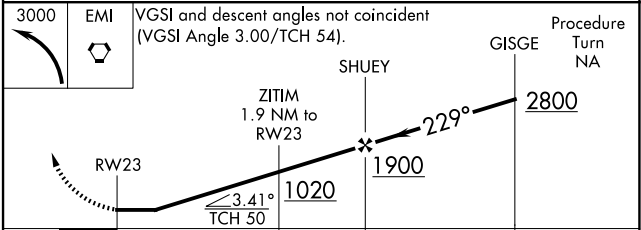
NE-3, 20 MAR 2025 to 17 APR 2025

ELEV 306	TDZE 296
----------	----------



REIL Rwy 5	REIL Rws 12, 23 and 30
HIRL Rwy 5-23	MIRL Rwy 12-30

WASHINGTON DC METROPOLITAN SFRA  
**WARNING -- WASHINGTON DC SFRA. CTC POTOMAC APP CON**



CATEGORY	A	B	C	D
LNNAV MDA	820-3/4 524 (600-3/4)		820-1 1/2 524 (600-1 1/2)	820-1 3/4 524 (600-1 3/4)
<b>C</b> CIRCLING	920-1 614 (700-1)		1100-2 1/4 794 (800-2 1/4)	1200-2 3/4 894 (900-2 3/4)