

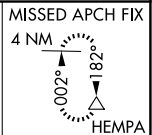
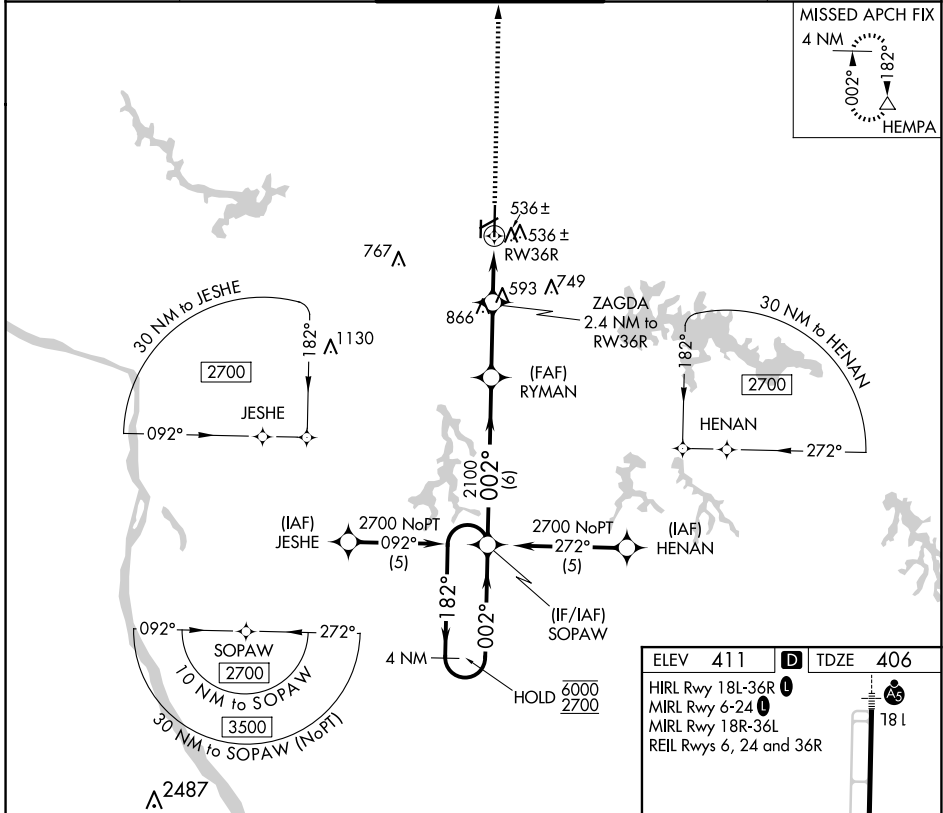
APP CRS	Rwy ldg	6506
002°	TDZE	406
	Apt Elev	411

RNAV (GPS) RWY 36R

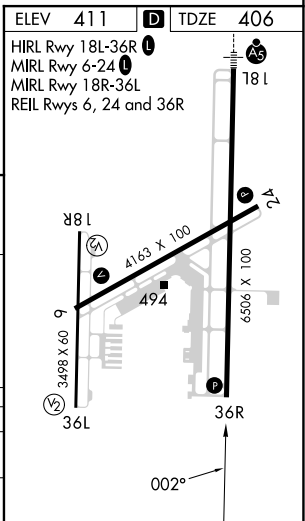
SOUTHERN ILLINOIS (MDH)

RNP APCH.		MISSED APPROACH: Climb to 2700 direct HEMPA and hold.		
<p>▼ Circling Rwy 6, 36L NA at night.</p> <p>▲ Rwy 36R helicopter visibility reduction below 3/4 SM NA.</p>				

ATIS 119.725	KANSAS CITY CENTER 127.475 346.275	SOUTHERN TOWER ★ 125.35 (CTAF) 322.4	GND CON 121.8	UNICOM 122.95
------------------------	--	--	-------------------------	-------------------------



4 NM Holding Pattern	VGSI and descent angles not coincident (VGSI Angle 3.00/TCH 45).		2700	HEMPA
SOPAW	RYMAN	ZAGDA 2.4 NM to RW36R		
6000 2700	2100	1200	1.3 NM to RW36R	
182°	002°	002°		
3.05°	TCH 55			
6 NM	2.7 NM	1.1 NM	1.3 NM	
CATEGORY	A	B	C	D
LNVA MDA	860-1	454 (500-1)	860-1 3/8	454 (500-1 3/8)
CIRCLING	900-1 489 (500-1)	920-1 509 (600-1)	1180-2 1/4 769 (800-2 1/4)	1180-2 1/2 769 (800-2 1/2)



EC-3, 20 MAR 2025 to 17 APR 2025

EC-3, 20 MAR 2025 to 17 APR 2025