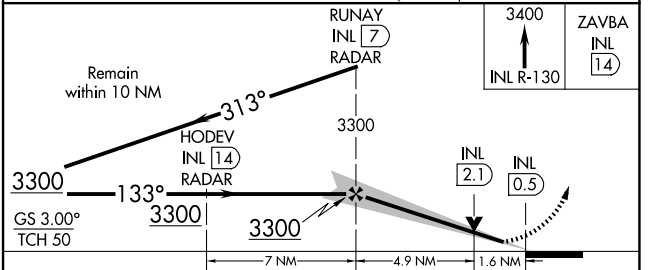
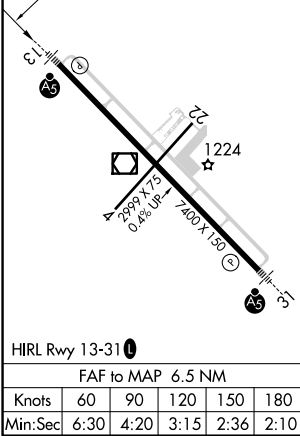


LOC I-ABK <b>109.1</b>	APP CRS <b>133°</b>	Rwy Idg <b>7400</b>
		TDZE <b>1184</b>
		Apt Elev <b>1182</b>

# ILS or LOC RWY 13

FALLS INTL/EINARSON FLD (INL)

DME or RADAR required.		MALSR 	MISSED APPROACH: Climb to 3400 on INL VOR/DME R-130 to ZAVBA/INL 14 DME/RADAR and hold.
<p><b>NA</b> Circling Rwy 4, 22 NA at night. Caution opposing ILS continuously on. DME from INL VOR/DME. DME use requires simultaneous reception of I-ABK and INL DME.</p>			
ASOS <b>120.0</b>	MINNEAPOLIS CENTER <b>120.9 377.1</b>	UNICOM <b>122.8 (CTAF)</b>	



CATEGORY	A	B	C	D
S-ILS 13	1384-½ 200 (200-½)			
S-LOC 13	1760-½	576 (600-½)	1760-¼	576 (600-1¼)
<b>C</b> CIRCLING	1760-1	578 (600-1)	1900-2 718 (800-2)	1900-2½ 718 (800-2½)

NC-1, 20 MAR 2025 to 17 APR 2025

NC-1, 20 MAR 2025 to 17 APR 2025