

VORTAC INL <b>114.95</b> Chan <b>96(Y)</b>	APP CRS <b>134°</b>	Rwy Idg <b>7400</b> TDZE <b>1184</b> Apt Elev <b>1182</b>
--	------------------------	---

# VOR RWY 13

FALLS INTL/EINARSON FLD (INL)

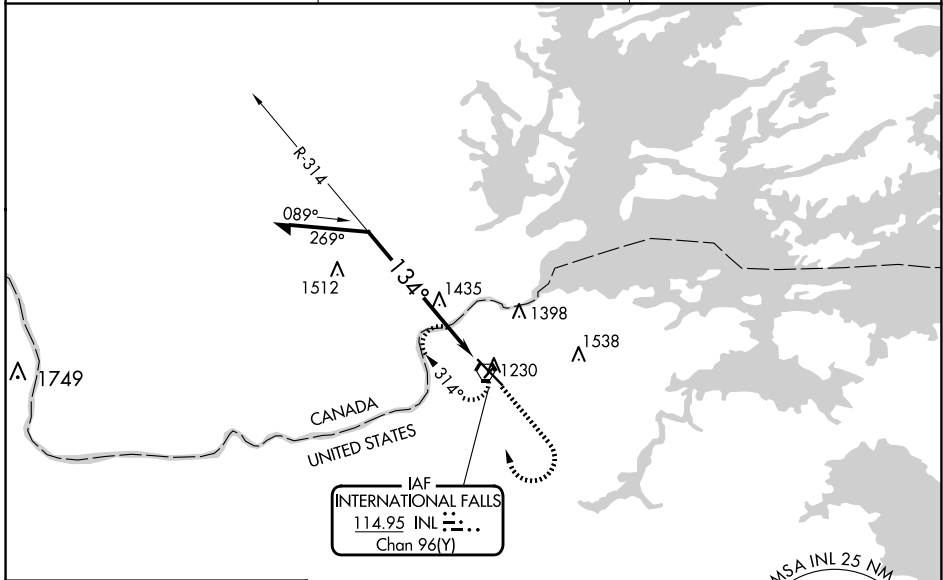
**⚠** Circling to Rwy 4-22 NA at night. VDP NA when using Baudette altimeter setting. When local altimeter setting not received, use Baudette altimeter setting and increase all MDAs 140 feet, and S-13 Cats A/B visibility ¼ mile, Cats C/D visibility ½ mile. Increase Circling Cat B visibility ¼ mile, Cat C and D ½ mile. For inop MALSRS when using Baudette altimeter setting, increase S-13 Cat A visibility ¼ mile.

MALSRS



MISSED APPROACH: Climb to 2900 then right turn direct INL VORTAC and hold.

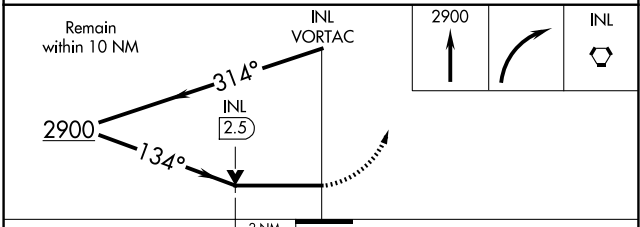
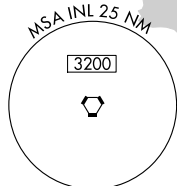
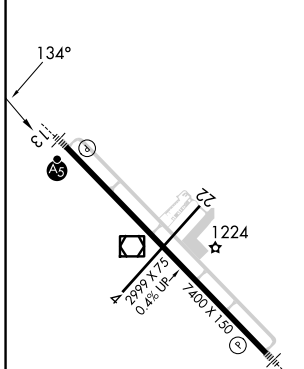
ASOS <b>120.0</b>	MINNEAPOLIS CENTER <b>120.9 377.1</b>	UNICOM <b>122.8 (CTAF)</b>
----------------------	--	-------------------------------



NC-1, 20 MAR 2025 to 17 APR 2025

NC-1, 20 MAR 2025 to 17 APR 2025

ELEV 1182	<b>D</b>	TDZE 1184
-----------	----------	-----------



CATEGORY	A	B	C	D
S-13	1880-½ 696 (700-½)	1880-1½ 696 (700-1½)	1880-1¾ 696 (700-1¾)	1880-1¾ 696 (700-1¾)
CIRCLING	1880-1 698 (700-1)	1900-2 718 (800-2)	1900-2¼ 718 (800-2¼)	1900-2¼ 718 (800-2¼)