

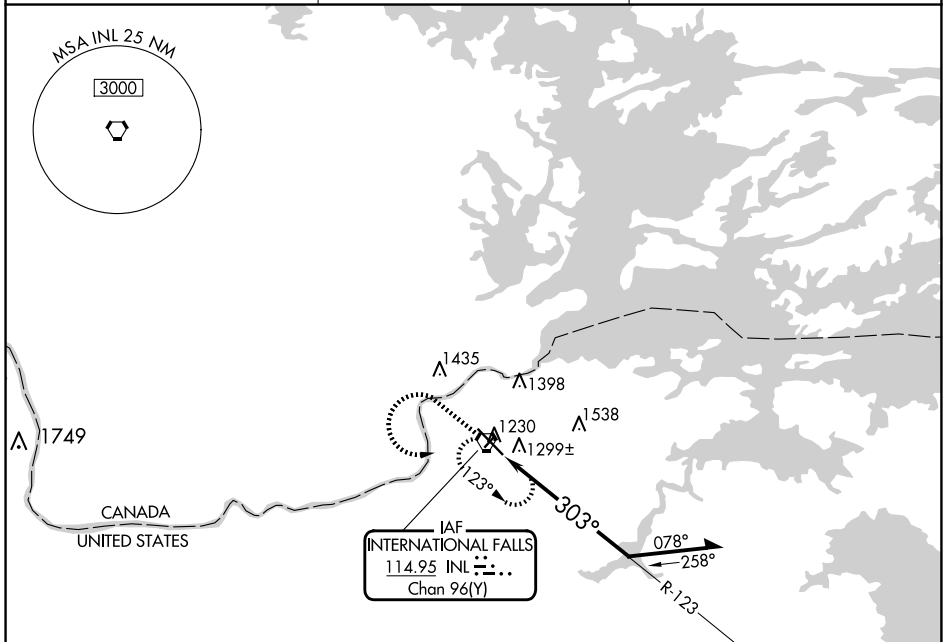
VORTAC INL <b>114.95</b> Chan <b>96(Y)</b>	APP CRS <b>303°</b>	Rwy Idg TDZE Apt Elev	<b>7400</b> <b>1174</b> <b>1182</b>
--	------------------------	-----------------------------	---

# VOR RWY 31

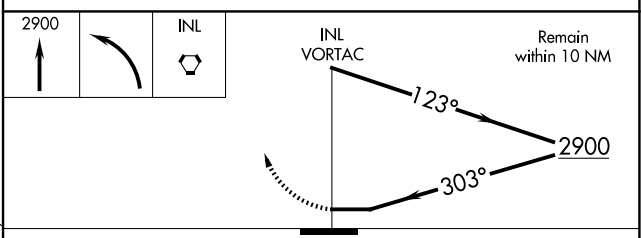
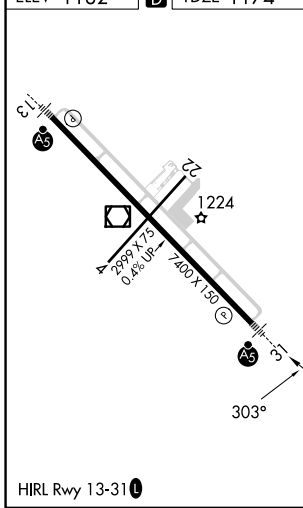
FALLS INTL/EINARSON FLD (INL)

<p>For inop MALS/R, increase S-31 Cat D visibility to 1 1/4. Circling to Rwy 4-22 NA at night.</p>	<p>MALS/R</p>	<p>MISSED APPROACH: Climb to 2900 then left turn direct INL VORTAC and hold.</p>

ASOS <b>120.0</b>	MINNEAPOLIS CENTER <b>120.9 377.1</b>	UNICOM <b>122.8 (CTAF)</b>
----------------------	--	-------------------------------



ELEV 1182		TDZE 1174
-----------	--	-----------



CATEGORY	A	B	C	D
S-31	1600-1/2	426 (500-1/2)	1600-3/4 426 (500-3/4)	1600-1 426 (500-1)
CIRCLING	1620-1 438 (500-1)	1680-1 498 (500-1)	1900-2 718 (800-2)	1900-2 1/4 718 (800-2 1/4)

NC-1, 20 MAR 2025 to 17 APR 2025

NC-1, 20 MAR 2025 to 17 APR 2025