

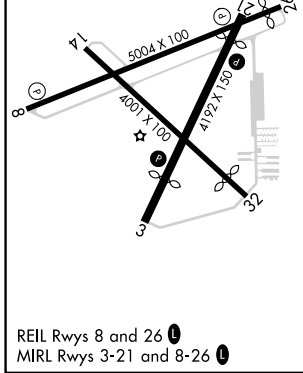
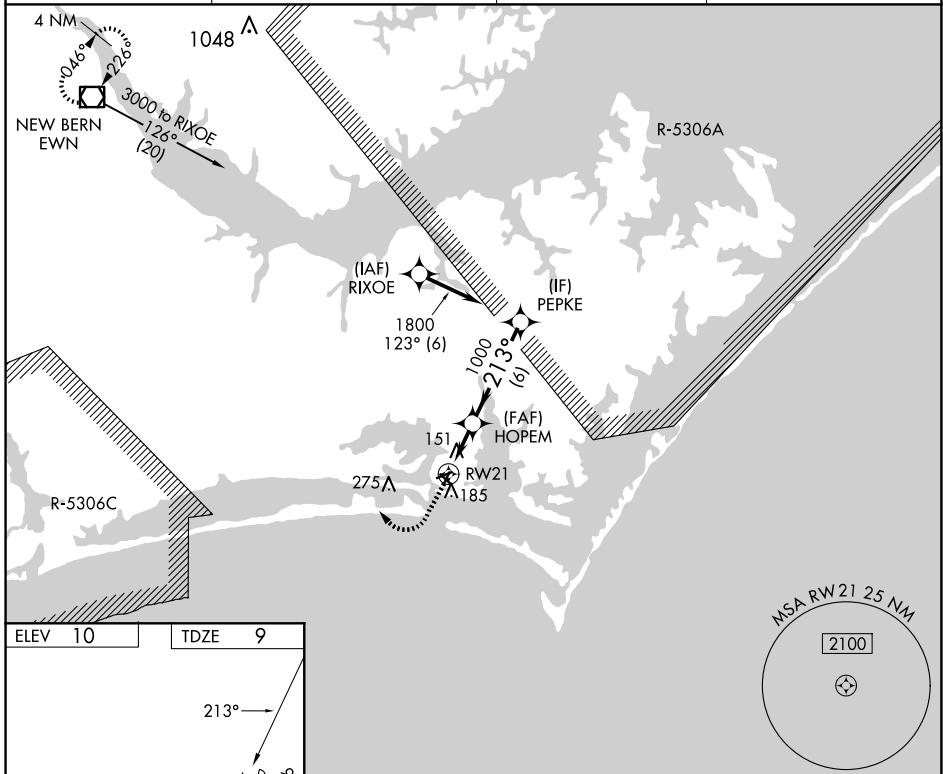
APP CRS 213°	Rwy Idg TDZE Apt Elev	3676 9 10
------------------------	-----------------------------	--------------------------------------

RNAV (GPS) RWY 21

MICHAEL J SMITH FLD (MR.H)

RNP APCH - GPS.		MISSED APPROACH: Climb to 500 then climbing right turn to 3000 direct EWN VOR/DME and hold.
<p>▼ Circling Rwy 8, 14, 32 NA at night. Rwy 21 helicopter visibility reduction below 3/4 SM NA. ATC clearance required to penetrate R-5306A and R-5306C.</p>		

ASOS 135,375	CHERRY POINT APP CON 132,575 299.6	CLNC DEL 125,65	UNICOM 122.8 (CTAF) 0
------------------------	--	---------------------------	---------------------------------



500	3000	EWN	VGSI and descent angles not coincident (VGSI Angle 4.00/TCH 54).	
HOPEM		PEPKE		
RW21		1800		
0.8		2.2 NM		6 NM
CATEGORY	A	B	C	D
LNAV MDA	420-1	411 (500-1)	NA	
CIRCLING	540-1	530 (600-1)	NA	

SE-2, 20 MAR 2025 to 17 APR 2025

SE-2, 20 MAR 2025 to 17 APR 2025