

| | | |
|-------------|----------|-------------|
| APP CRS | Rwy Idg | 3328 |
| 033° | TDZE | 9 |
| | Apt Elev | 10 |

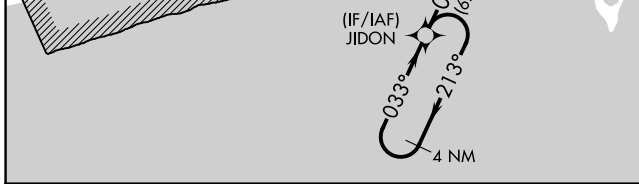
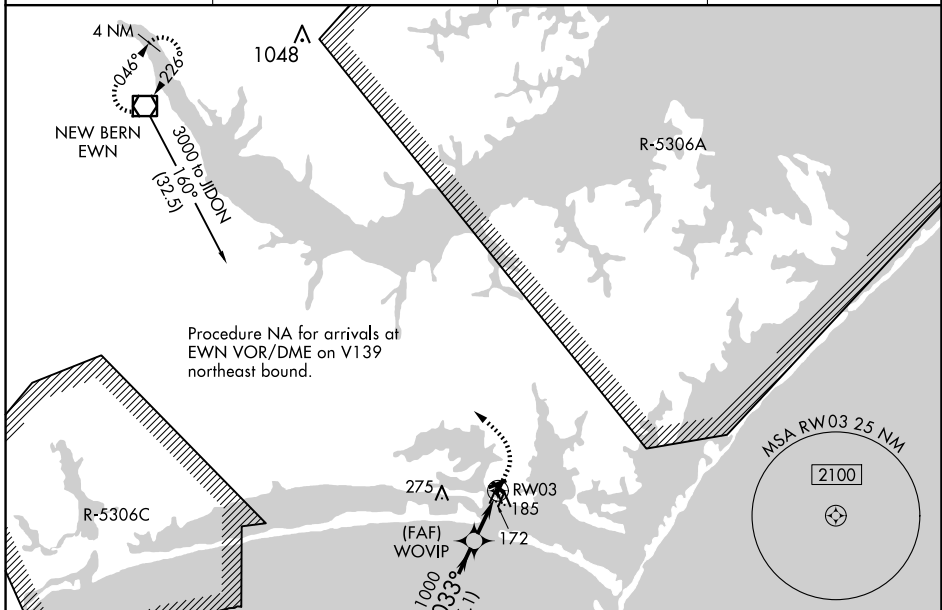
RNAV (GPS) RWY 3

MICHAEL J SMITH FLD (MR.H)

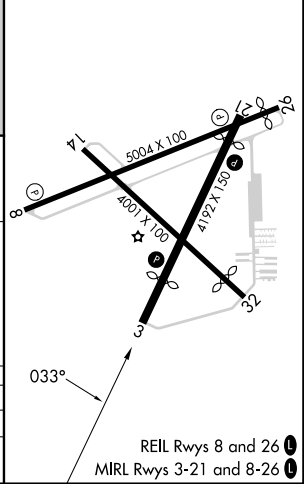
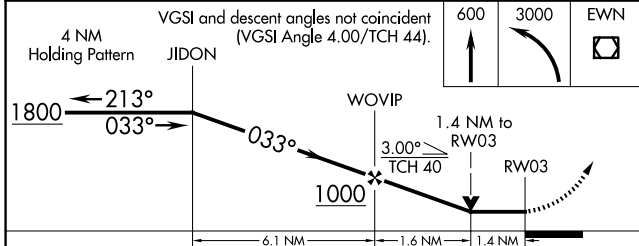
⚠ Circling Rwy 8, 14, 32 NA at night. DME/DME RNP-0.3 NA. ATC clearance required to penetrate R-5306A and R-5306C. When local altimeter setting not received, use Cherry Point MCAS (Cunningham Fld) altimeter setting and increase all MDA 40 feet. Rwy 3 helicopter visibility reduction below 3/4 SM NA. VDP NA when using Cherry Point MCAS (Cunningham Fld) altimeter setting. Rwy 8, 14, 32 helicopter visibility reduction below 1 SM NA.

MISSED APPROACH: Climb to 600 then climbing left turn to 3000 direct EWN VOR/DME and hold.

| | | | |
|------------------------|--|---------------------------|---------------------------------|
| ASOS 135.375 | CHERRY POINT APP CON 132.575 299.6 | CLNC DEL 125.65 | UNICOM 122.8 (CTAF) 0 |
|------------------------|--|---------------------------|---------------------------------|



| | |
|---------|--------|
| ELEV 10 | TDZE 9 |
|---------|--------|



| CATEGORY | A | B | C | D |
|----------|-------|-------------|---|----|
| LNVA MDA | 480-1 | 471 (500-1) | | NA |
| CIRCLING | 540-1 | 530 (600-1) | | NA |

SE-2, 20 MAR 2025 to 17 APR 2025

SE-2, 20 MAR 2025 to 17 APR 2025