

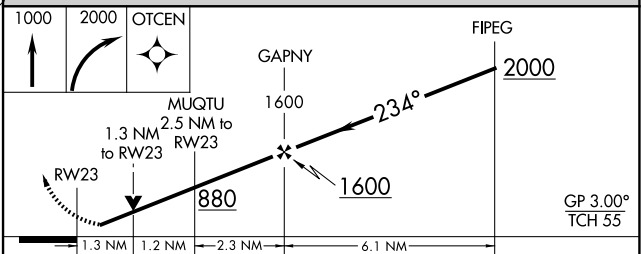
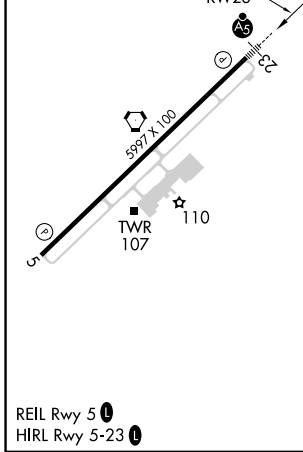
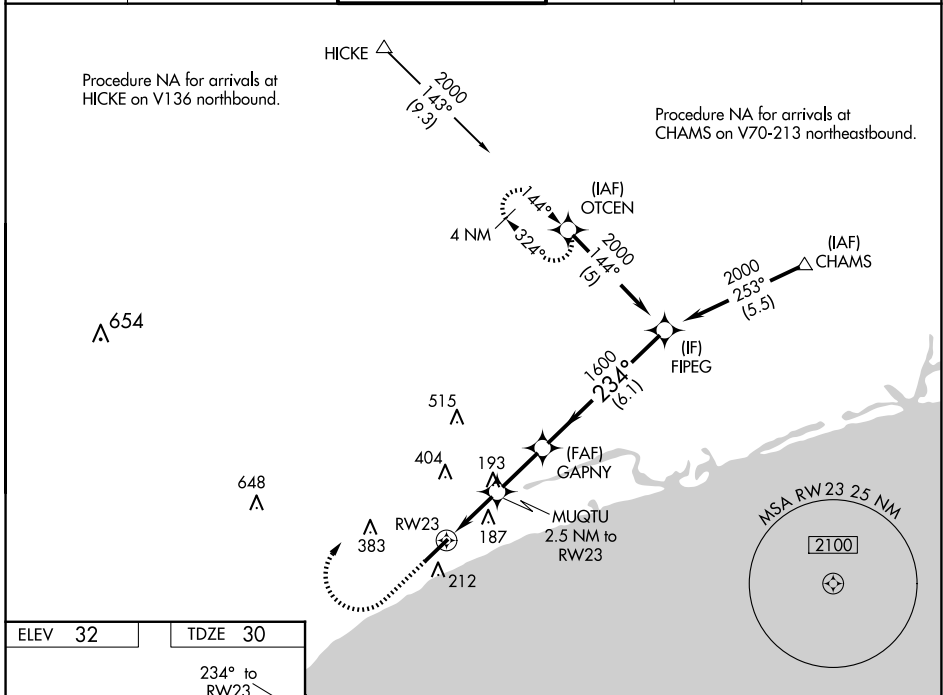
WAAS CH 42819 W23A	APP CRS 234°	Rwy Idg TDZE 30 Apt Elev 32	5997
--	------------------------	---	-------------

RNAV (GPS) RWY 23

GRAND STRAND (CRE)

RNP APCH-GPS.		MALSRL	MISSED APPROACH: Climb to 1000 then climbing right turn to 2000 direct OTCEN and hold.
<p>▼ Rwy 23 helicopter visibility reduction below 3/4 SM NA. For uncompensated Baro-VNAV systems, LNAV/VNAV NA below -7°C or above 54°C. For inop ALS, increase LNAV/VNAV all Cats visibility to 1 1/8 SM; increase LNAV Cats A/B visibility to 1 SM.</p>			

ATIS 119.625	MYRTLE BEACH APP CON* 119.2 350.3	STRAND TOWER* 124.6 (CTAF) 0 257.6	GND CON 121.8 257.6	CLNC DEL 121.8	UNICOM 122.95
------------------------	---	--	-------------------------------	--------------------------	-------------------------



	1.3 NM	1.2 NM	2.3 NM	6.1 NM	
CATEGORY	A	B	C	D	
LPV DA		230-1/2	200 (200-1/2)		
LNAV/VNAV DA		412-3/4	382 (400-3/4)		
LNAV MDA	480-3/4	450 (500-3/4)	480-7/8	450 (500-7/8)	
CIRCLING	520-1	488 (500-1)	720-2 688 (700-2)	720-2 1/4 688 (700-2 1/4)	

SE-2, 20 MAR 2025 to 17 APR 2025

SE-2, 20 MAR 2025 to 17 APR 2025