

**RNAV (GPS) RWY 9**  
GRAND HAVEN MEML AIRPARK (3GM)

APP CRS <b>095°</b>	Rwy Idg <b>3752</b>
	TDZE <b>603</b>
	Apt Elev <b>604</b>

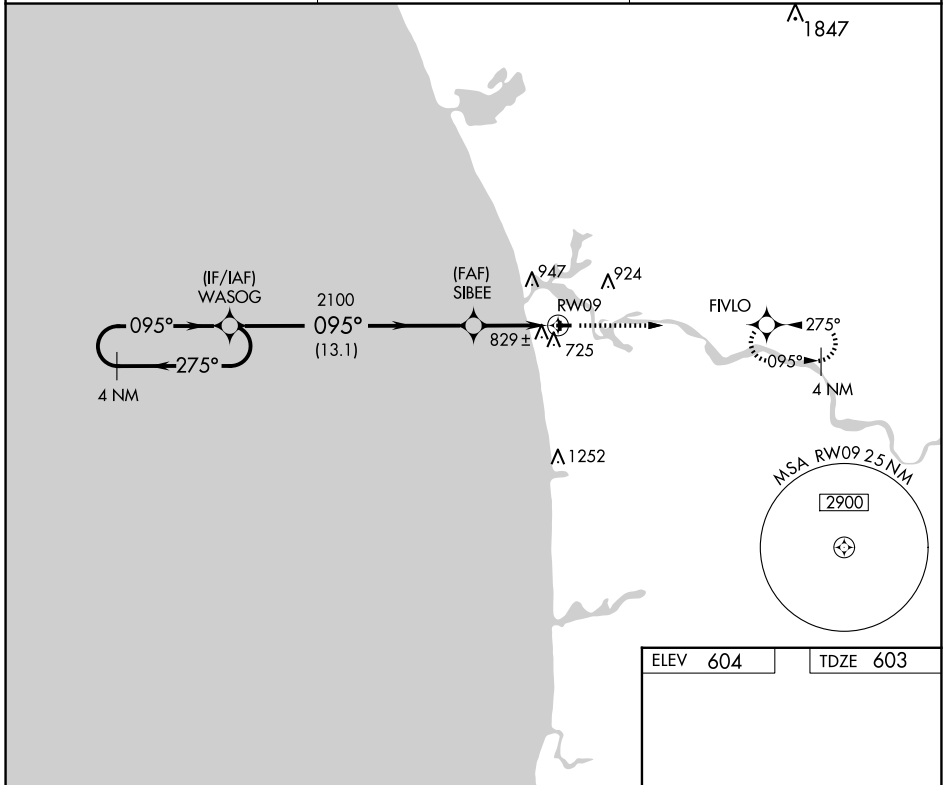
RNP APCH.  
 ▼ Use Muskegon altimeter setting. Circling Rwy 18, 36 NA at night.  
 ▲ NA Rwy 9 helicopter visibility reduction below 3/4 SM NA.

MISSED APPROACH: Climb to 2700 direct FIVLO and hold.

MKG ASOS  
**124.3**

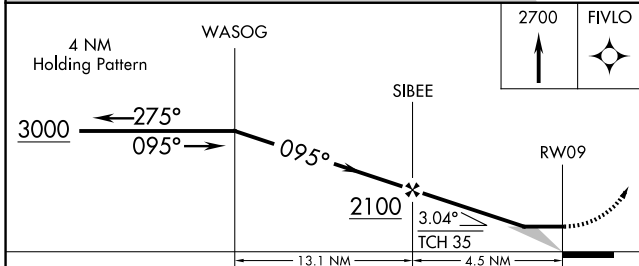
GREAT LAKES APP CON\*  
**133.825 290.35**

UNICOM  
**122.7 (CTAF) 0**

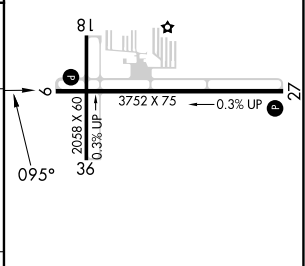


EC-1, 20 MAR 2025 to 17 APR 2025

EC-1, 20 MAR 2025 to 17 APR 2025



ELEV 604	TDZE 603
----------	----------



CATEGORY	A	B	C	D
LNAV MDA	1140-1	537 (600-1)	1140-1½ 537 (600-1½)	NA
CIRCLING	1240-1	636 (700-1)	1320-2 716 (800-2)	NA

REIL Rwy 9 and 27 0  
MIRL Rwy 9-27 and 18-36 0